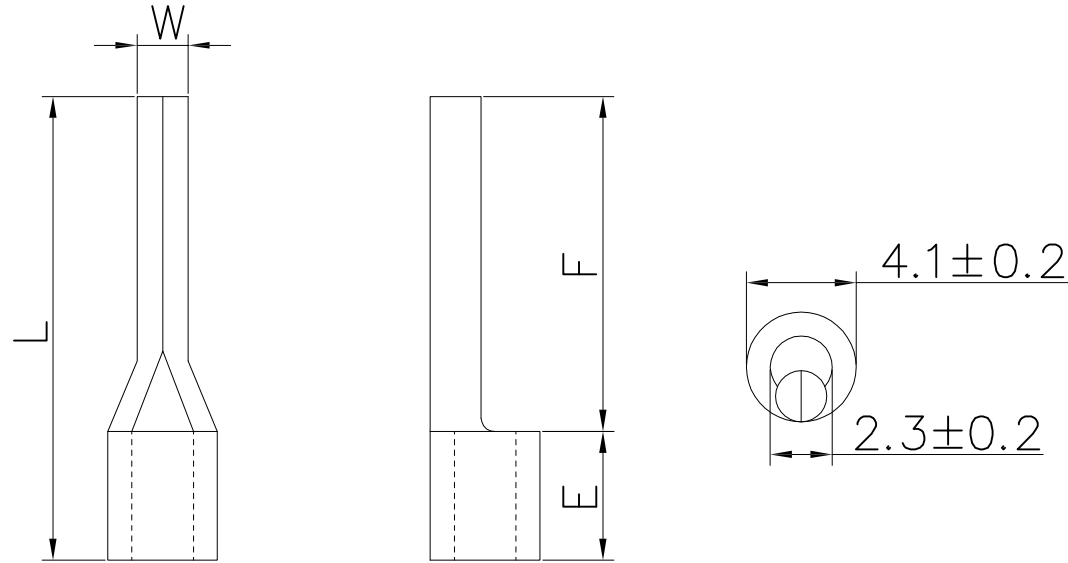


The product using material and processing must conform to the "WL-PZ-001"HSF technical standard control requirements

RoHS



备注:

1. 接压线径: 1.5-2.5mm² (16-14AWG)
2. 端子材质: 紫铜, 厚度: 0.8 ± 0.03
3. 缝隙: 焊接
4. 表面处理: 镀锡, 镀层厚度: $2.5 \mu\text{m} - 5 \mu\text{m}$, 镀层温度: 120° /2小时
5. 接线类型: 绞合线
6. 最大电流: 27A

ItemNO料号	mm/inch 主要尺寸			
	W	L	E	F
WLLP10-100AB030B85	1.9 ± 0.15	14.8 ± 0.3	4.8 ± 0.3	10.0 ± 0.3
WLLP10-120AB030B85	1.9 ± 0.15	16.8 ± 0.5	4.8 ± 0.3	12.0 ± 0.4
WLLP10-130AB030B85	1.9 ± 0.15	17.8 ± 0.5	4.8 ± 0.3	13.0 ± 0.5
WLLP10-180AB030B85	1.9 ± 0.15	22.8 ± 0.5	4.8 ± 0.3	18.0 ± 0.5

REV.	REVISION RECORD	DATE		GENERAL TOLERANCES		SCALE: 1:1	NAME	DATE	PART.NO:	DWG.NO:	
A0	NEW RELEASE	22.05.09		LINEAR	ANGLES	APPROVED	Wang_jr	22.05.09	WLLP10-XXXAB030B85	ENDE05	
			0.0±0.35	X'REF±6°	DESIGNER	Han_Gao	22.05.09	TITLE:		无绝缘护套针形单粒端子 PTN2系列 REV: A0 SHEET: 1/1	
			UNIT:mm	0.00±0.25	X'±3'	DRAWN	LanXuan_Hou	22.05.09			
			SIZE: A4	0.000±0.10	X'X' ±2'						