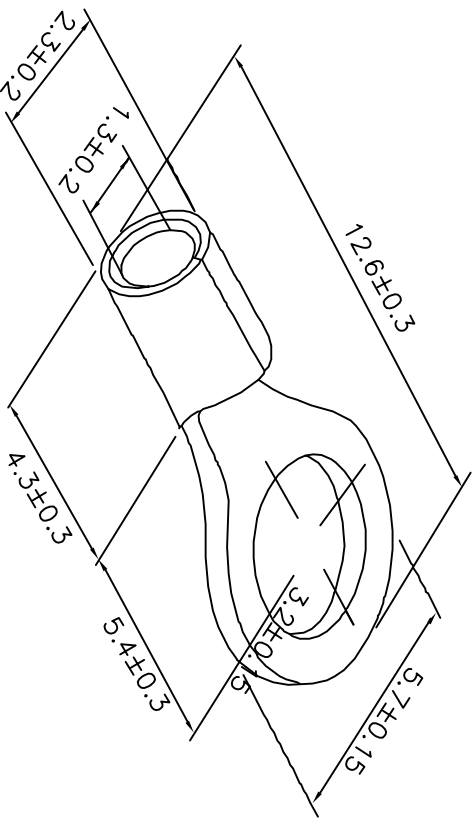


The product using material and processing must conform to the "WL-PZ-001"HSF technical standard control requirements

RoHS



备注：  
 压接线径：0.25—0.75mm (24—18awg)  
 端子材质：紫铜  
 缝隙：焊接  
 镀层厚度：2.5 μm—5 μm  
 接线类型：绞合线  
 厚度：0.5±0.02  
 表面处理：镀锡  
 镀层耐温：120° /2小时  
 最大电流：10A

REV.	REVISION RECORD	DATE	GENERAL TOLERANCES		SCALE:	NAME	DATE	PART NO:	DWG. NO:	 Wanlian Technology Co., Ltd
AO	NEW RELEASE	21.11.17	LINEAR	ANGLES	1:1	Wang_jr	21.11.17	WLLR10-000A0030A01	ENDE05	
			0.0±0.35	X°REF±6°	APPROVED	Han_Gao	21.11.17	TITLE:	REV: AO	 Wanlian Technology Co., Ltd
			UNIT:mm	X°±3°	DESIGNER	Zijun_Huang	21.11.17	无绝缘护套圆形端子	SHEET: 1/1	
			SIZE: A4	X°X' ±2°	DRAWN					