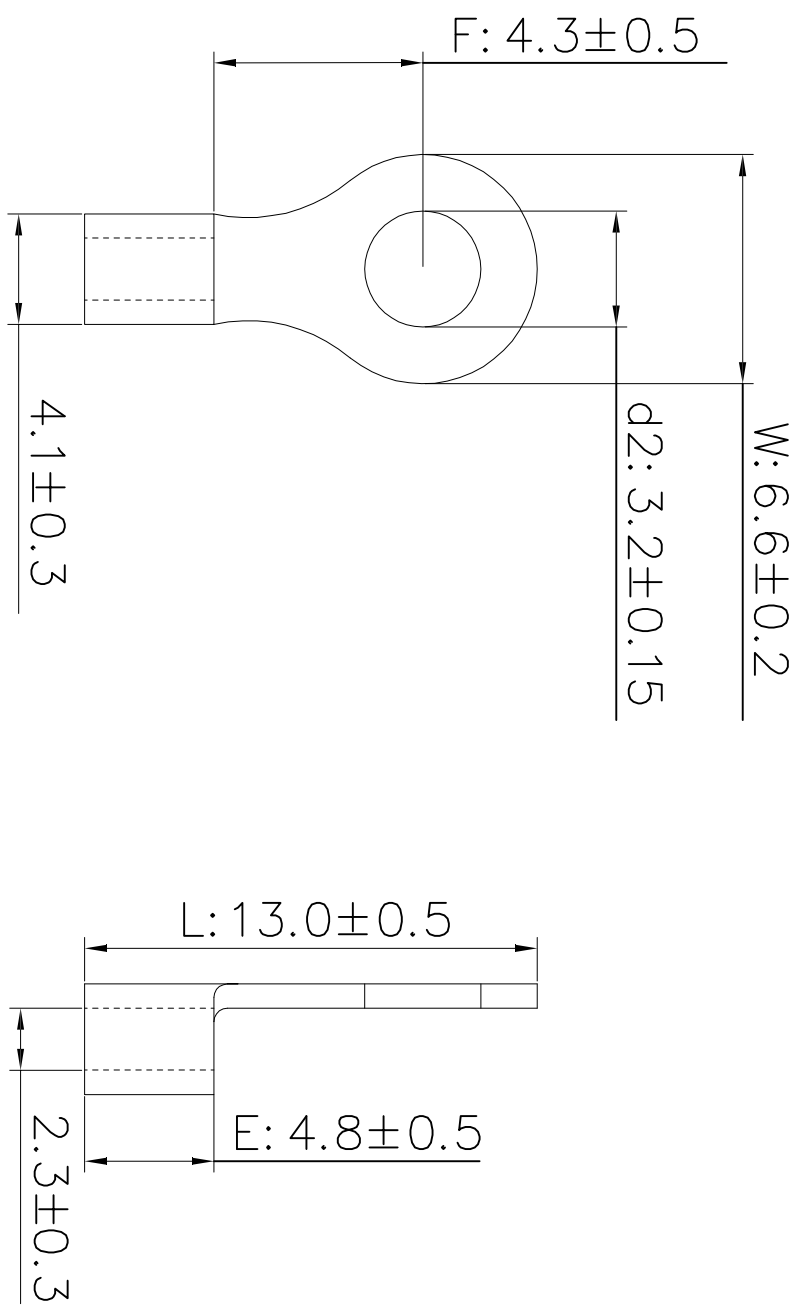


The product using material and processing must conform to the "WL-PZ-001"HSF technical standard control requirements

RoHS



- 备注:
1. 接压线径: 1.5-2.5mm<sup>2</sup> (16-14AWG)
  2. 端子材质: 紫铜 厚度: 0.8 $\pm$ 0.03
  3. 表面处理: 镀锡 镀层厚度: 2.5um-5um 镀层温度: 120° /2小时
  4. 缝隙: 焊接
  5. 接线类型: 绞合线
  6. 最大电流: 27A
  7. 螺栓规格: #4

REV.	REVISION RECORD	DATE	GENERAL TOLERANCES		SCALE:	NAME	DATE	PART NO:	DWG. NO:	Wanlian Technology Co., Ltd	
AO	NEW RELEASE	21.11.17	LINEAR	ANGLES	1:1	Wang_jr	21.11.17	WLLR10-032AB030A04	ENDE05	REV: AO	SHEET: 1/1
			0.0 $\pm$ 0.35	X'REF $\pm$ 6°	APPROVED	Han_Gao	21.11.17	TITLE:			
			UNIT:mm	X $\pm$ 3°	DESIGNER	Zijun_Huang	21.11.17	无绝缘护套圆形端子			
			SIZE: A4	X'X' $\pm$ 2°	DRAWN						