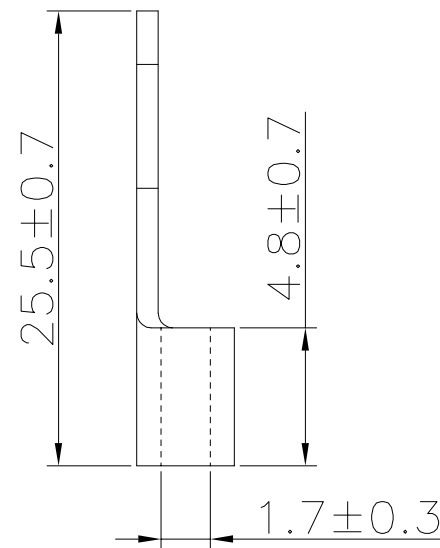
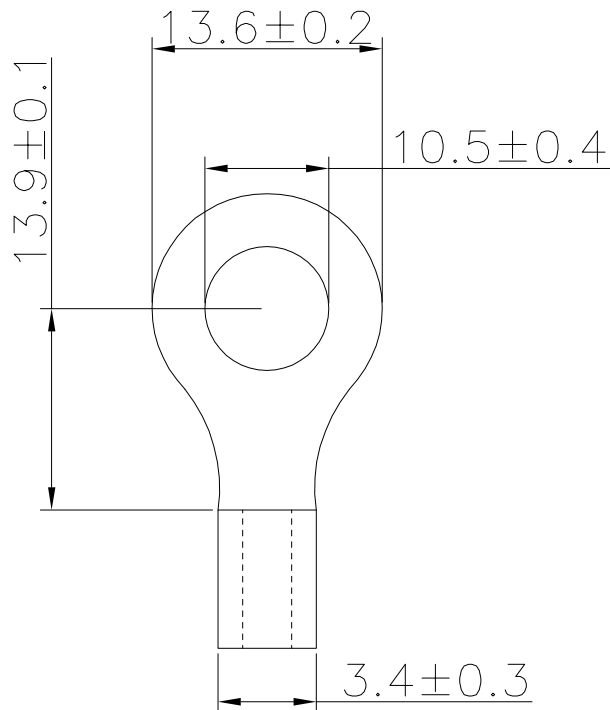


The product using material and processing must conform to the "WL-PZ-001"HSF technical standard control requirements

RoHS



备注:

1. 接压线径: 0.5-1.5mm² (22-16AWG)
2. 端子材质: 紫铜, 厚度: 0.75±0.03
缝隙: 焊接
3. 表面处理: 镀锡, 镀层厚度: 2.5 μm-5 μm,
镀层温度: 120° /2小时
4. 接线类型: 绞合线
5. 最大电流: 19A

REV.	REVISION RECORD	DATE		GENERAL TOLERANCES		SCALE:	NAME	DATE	PART.NO:	DWG.NO:	 WanLian Teconology Co., Ltd	
AO	NEW RELEASE	22.03.02		LINEAR	ANGLES	1:1	APPROVED	Wang_jr				21.11.17
			0.0±0.35	X'REF±6°		DESIGNER	Han_Gao	21.11.17	TITLE:	REV: A0		SHEET: 1/1
			UNIT:mm	X'±3°		DRAWN	Zijun_Huang	21.11.17				
			SIZE: A4	0.000±0.10	X'X' ±2°							