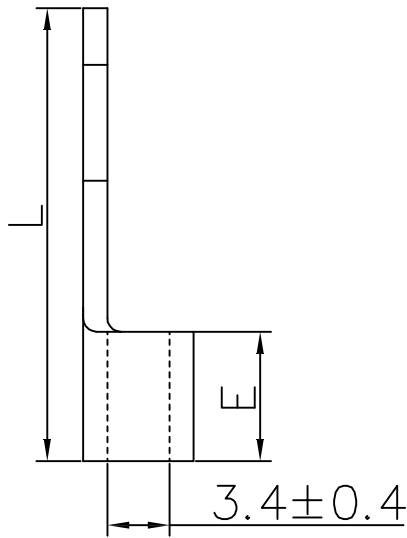
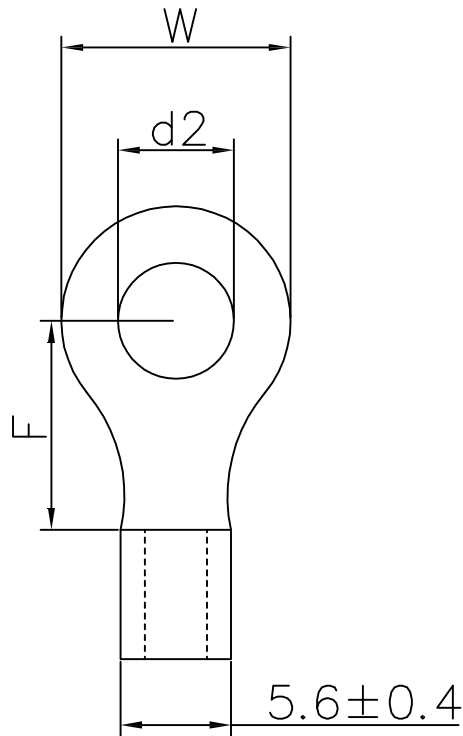


The product using material and processing must conform to the "WI-PZ-001"HSF technical standard control requirements

Item NO.料号	螺栓规格		mm/inch主要尺寸			
	Stud Size	d2	W	L	F	E
WLLR10-032AD030A89	#4	3.2±0.15	7.2±0.15	16.2±0.5	6.6±0.5	6.8±0.5
WLLR10-037AD030A90	#6	3.7±0.2	7.2±0.15	16.2±0.5	5.9±0.5	6.8±0.5
WLLR10-043AD030A91	#8	4.3±0.2	7.2±0.15	16.2±0.5	5.9±0.5	6.8±0.5
WLLR10-043AD030A92	#8	4.3±0.2	9.5±0.15	19.8±0.5	8.3±0.5	6.8±0.5
WLLR10-053AD030A93	#10	5.3±0.2	9.5±0.15	19.8±0.5	8.3±0.5	6.8±0.5
WLLR10-064AD030A94	1/4	6.4±0.3	12.0±0.2	23.5±0.7	11.0±0.7	6.8±0.7
WLLR10-084AD030A95	5/16	8.4±0.3	15.0±0.2	28.0±0.7	13.7±0.7	6.8±0.7
WLLR10-105AD030A96	3/8	10.5±0.3	15.0±0.2	28.0±0.7	13.7±0.7	6.8±0.7
WLLR10-130AD030A97	1/2	13.0±0.3	19.2±0.2	32.4±0.7	16.0±0.7	6.8±0.7



端子材质: 紫铜	表面处理: 镀锡
缝隙: 焊接	厚度: 1.0±0.03
镀层厚度: 2.5um-5um	镀层耐温: 120° /2小时
接线类型: 绞合线	最大电流: 48A

REV.	REVISION RECORD	DATE		GENERAL TOLERANCES		SCALE: 1:1	NAME	DATE	PART.NO:	DWG.NO:	
AO	NEW RELEASE	21.10.12		LINEAR	ANGLES	APPROVED	Wang_jr	21.10.12	WLLR10-XXXAD030XXX	ENDE05	
			0.0±0.35	X°REF±6°	DESIGNER	Han_Gao	21.10.12	TITLE:			
			UNIT:mm	0.00±0.25	X°±3°	DRAWN		Zijun_Huang 21.10.12			REV: A0
			SIZE: A4	0.000±0.10	X°X'±2°			无绝缘O形单粒端子 镀锡 接线4.0-6.0mm² (12-10AWG)			