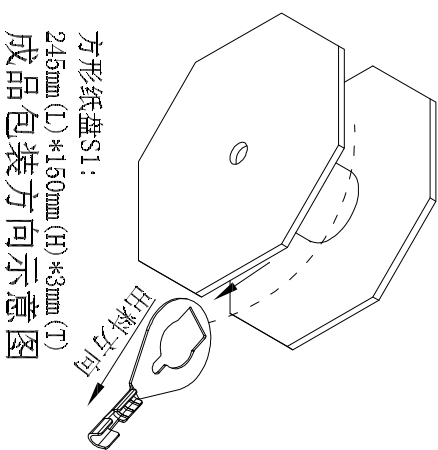
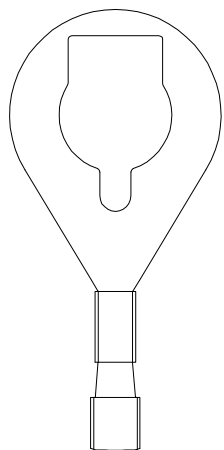
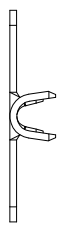
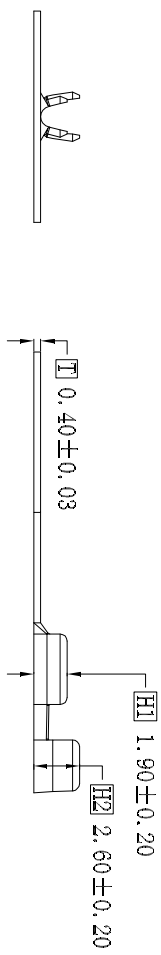
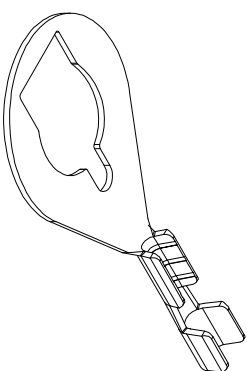
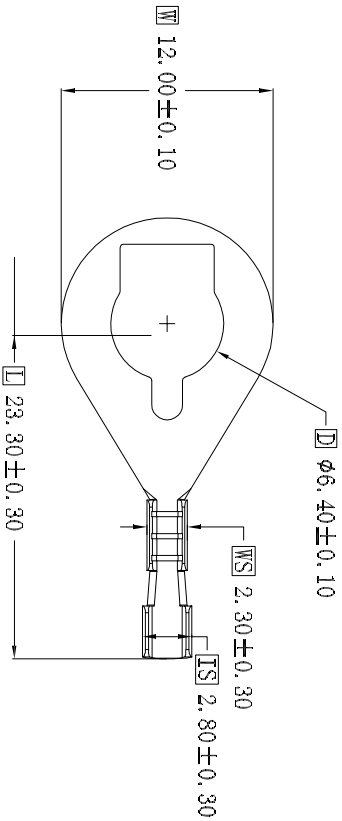


The product using material and processing must conform to the "WL-PZ-001"HSF technical standard control requirements

RoHS



产品说明 Product Description:  
 1.表面处理 Surface treatment :  
 电镀Sn , Matte Tin Plating  
 2.外观 Appearance:  
 >30CM距离, <5S目视, 无腐蚀、刮伤、氧化  
 No corrosion, scratches, oxidation on surface  
 Inspection condition:  
 Inspect from >30cm away and for <5 seconds  
 3.环保: 符合ROHS&REACH  
 ROHS&REACH compliance: Yes  
 4.备注:NOTE

REV.	REVISION RECORD	DATE	GENERAL TOLERANCES		SCALE:	NAME	DATE	PART NO:	DWG NO:	REV:	SHEET:
AO	NEW RELEASE	21.11.17	LINEAR	ANGLES	1:1	Wang_jr	21.11.17	WLLS20-064A0030B60	ENDE05	AO	1/1
			0.0±0.35	X°REF±6°	APPROVED	Han_Gao	21.11.17	TITLE: 6.3针形端子 压线22-24AWG	Wanlian Technology Co., Ltd		
			UNIT:mm	X°±3°	DESIGNER	Zijun_Huang	21.11.17				
			SIZE: A4	X°X' ±2°	DRAWN						
			0.000±0.10								

