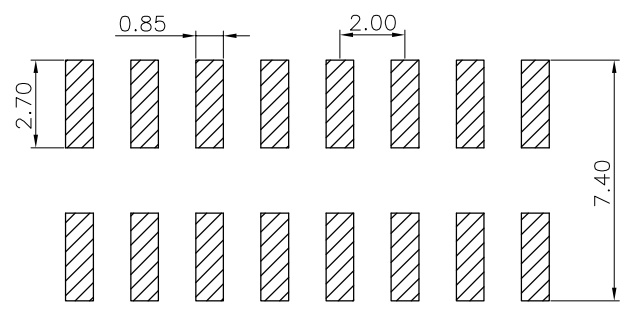
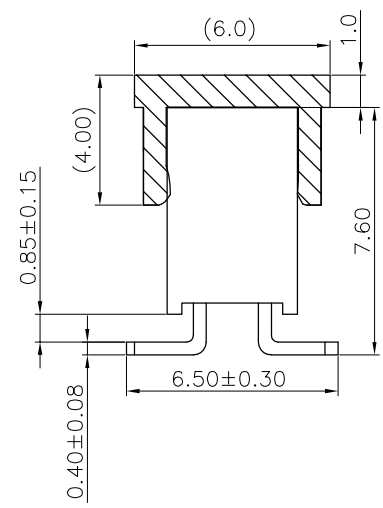
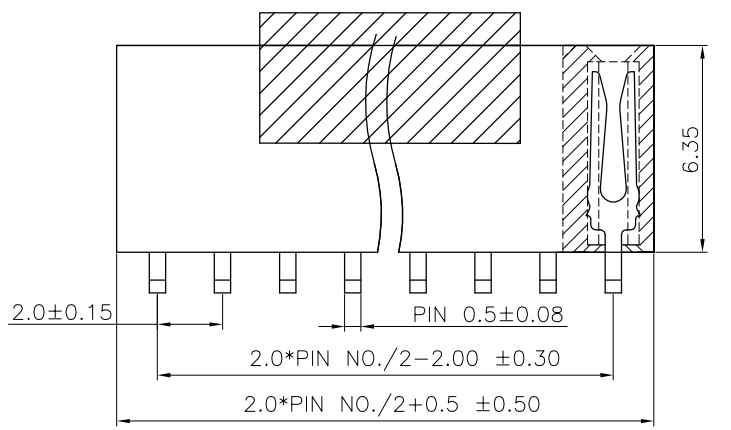
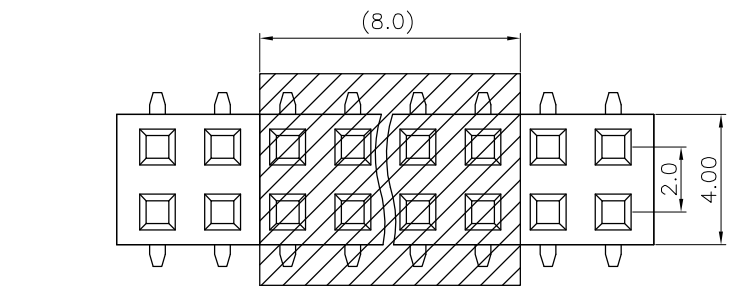


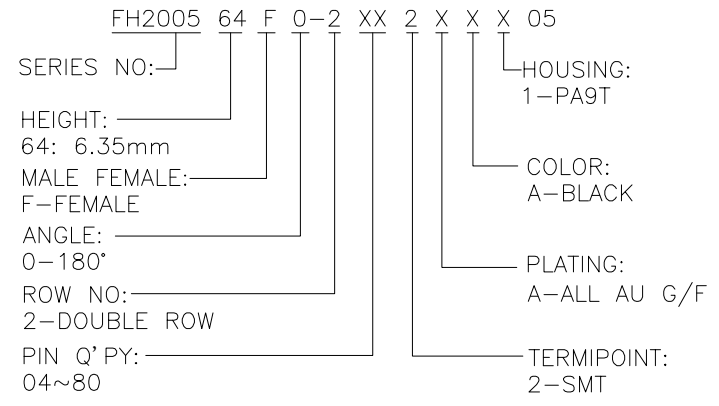
The product using material and processing must conform to the "WI-PZ-001"HSF technical standard control requirements

RoHS



RECOMMENDED PCB LAYOUT  
(GENERAL TOLERANCE:±0.05)

- NOTE:
- MATERIAL SPECIFICATION:
    - 1-1.HOUSING: UL94V-0
    - 1-2.CONTACTS: BRASS
  - PLATING SPECIFICATION:
    - 2-1.CONTACTS: TIN/GOLD FLASH PLATED OVER ALL.
  - ELECTRICAL PERFORMANCE:
    - 3-1.CURRENT RATING: 2A AC/DC
    - 3-2.CONTACT RESISTANCE: 30 mΩ MAX
    - 3-3.INSULATION RESISTANCE: 1000MΩ Min
    - 3-4.DIELECTRIC WITHSTANDING : 300V
  - ENVIRONMENTAL PERFORMANCE:
    - 4-1.OPERATING TEMPERATURE: -40°C~+105°C.
  - PACKAGE SPEC: REEL
  - P/N:



REV.	REVISION RECORD	DATE		GENERAL TOLERANCES		SCALE: 1:1	NAME	DATE	PART.NO: FH200564F0-2XX2XXX05	DWG.NO: ENDE05	 WanLian Technology Co., Ltd	
AO	NEW RELEASE	22.05.09		LINEAR	ANGLES	APPROVED	Wang_jr	22.05.09				
			UNIT:mm	X'±3'	DESIGNER	Han_Gao	22.05.09	TITLE:	2.0 Y型双排排母 SMT 塑高 6.35	REV: A0		SHEET: 1/1
			SIZE: A4	X'X' ±2'	DRAWN	LanXuan_Hou	22.05.09					