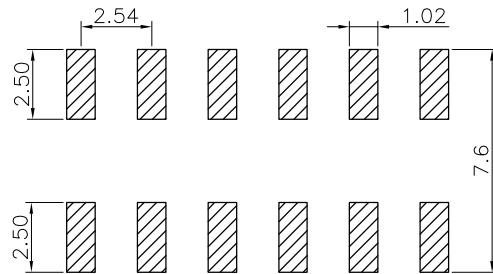
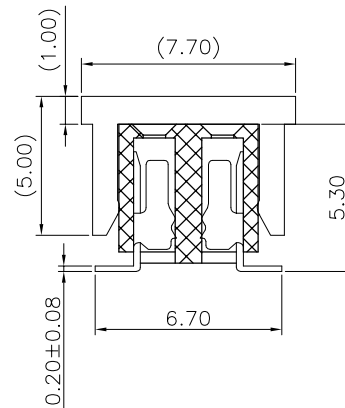
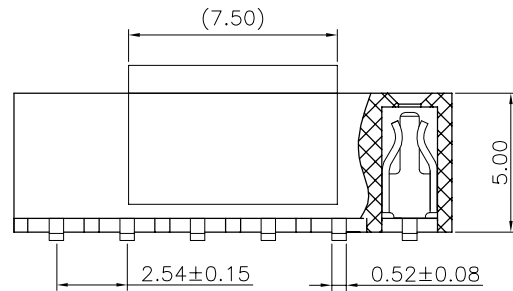
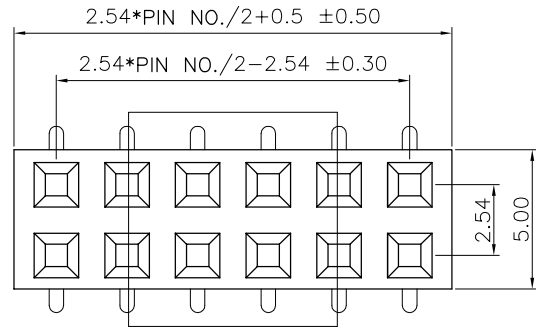


The product using material and processing must conform to the "WI-PZ-001" HSF technical standard control requirements



RECOMMEND P. C. B LAYOUT
PCB TOLERANCE: ±0.05 (TOP VIEW)

NOTE:

- 1.MATERIAL SPECIFICATION:
 - 1-1.HOUSING: THERMOPLASTIC HIGH TEMP,UL94V-0
 - 1-2.CONTACTS: BRASS
- 2.PLATING SPECIFICATION:
 - 2-1.CONTACTS: TIN/GOLD FLASH PLATED OVER ALL.
- 3.ELECTRICAL PERFORMANCE:
 - 3-1.CURRENT RATING: 3A AC/DC
 - 3-2.CONTACT RESISTANCE: 30 mΩ MAX
 - 3-3.INSULATION RESISTANCE: 1000MΩ Min
 - 3-4.DIELECTRIC WITHSTANDING : 500V
- 4.ENVIRONMENTAL PERFORMANCE:
 - 4-1.OPERATING TEMPERATURE: -40°C~+105°C.
- 5.PACKAGE SPEC: REEL
- 6.P/N:

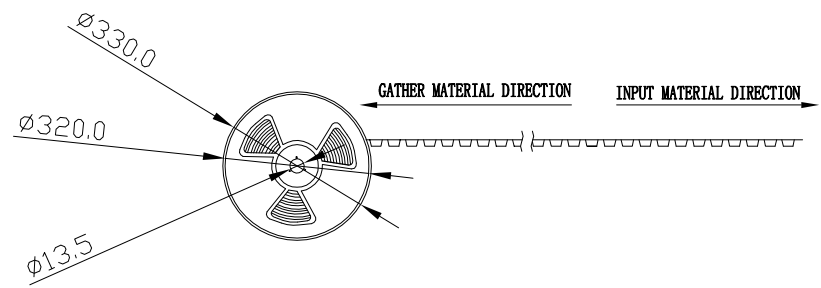
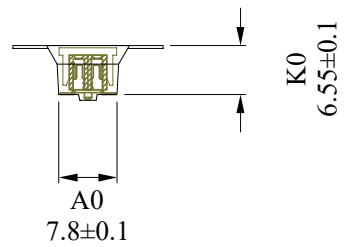
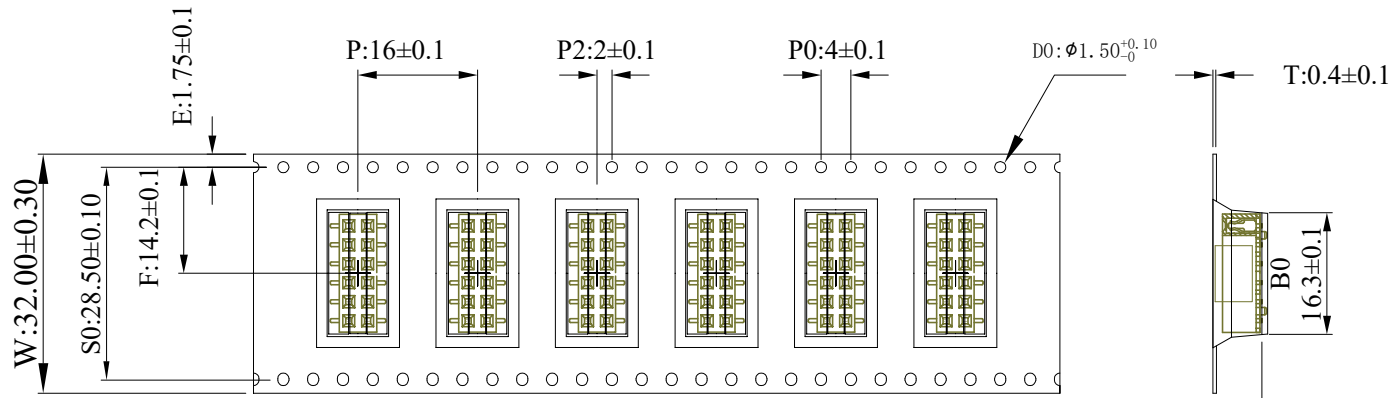
SERIES NO: FH2541 50 F 0-2 XX 2 X X X 02
 HEIGHT: 50: 5.0mm
 MALE FEMALE: F-FEMALE
 ANGLE: 0-180°
 ROW NO: 2-DOUBLE ROW
 PIN Q'PY: 04~80

HOUSING: 1-PA9T
 COLOR: A-BLACK
 PLATING: A-ALL AU G/F
 TERMIPOINT: 2-SMT

REV.	REVISION RECORD	DATE		GENERAL TOLERANCES		SCALE: 1:1	NAME	DATE	PART.NO: FH254150F0-2XX2XXX02	DWG.NO: ENDE05	 WanLian Technology Co., Ltd	
AO	NEW RELEASE	22.10.28		LINEAR	ANGLES	APPROVED	Wang_jr	22.10.28				
			UNIT:mm	0.00±0.25	X'±3°	DESIGNER	Han_Gao	22.10.28	TITLE: Pitch 2.54mm 180° 双排 SMT+CAP U 型排母 塑高5.0 PC 6.5 加盖		REV: A0	SHEET: 1/2
			SIZE: A4	0.000±0.10	X'X' ±2°	DRAWN	LanXuan_Hou	22.10.28				

The product using material and processing must conform to the "WI-PZ-001" HSF technical standard control requirements

RoHS



W	32±0.3
F	14.20±0.1
T	0.40±0.05
E	1.75±0.1
P	16.0±0.1
P0	4±0.1
P2	2±0.1
A0	7.40±0.1
B0	15.90±0.1
K0	6.65±0.1
D0	1.50 ^{0.1} ₀
S0	28.50±0.1

- NOTES:
1. ALL DIMENSIONS MEET EIA-481-B REQUIREMENTS.
 2. MATERIAL: BLACK PS
 3. CARRIER CAMER NOT TO EXCEED 1mm IN 250mm.
 4. A0 AND B0 MEASURED ON A PLANE 0.3mm ABOVE THE BOTTOM OF THE POCKET.
 5. K0 MEASURED FROM A PLANE ON THE INSIDE BOTTOM OF THE POCKET TO THE TOP SURFACE OF THE CARRIER.
 6. QUANTITY: 500PCS. (LENGTH: 8.448m)
 7. THICKNESS: 0.3±0.05mm.
 8. REEL: 13"

数量	500pcs/卷	载带宽度	W32	载带长度	8.448米
留空	14-500-14	装箱数量	10卷/箱	卷盘外径	330mm/13寸
		上带规格	25.5mm*200米	冷封/热封	冷封
		下带颜色	高透	下带材质	PS

REV.	REVISION RECORD	DATE	☉	GENERAL TOLERANCES		SCALE: 1:1	NAME	DATE	PART.NO:	DWG.NO:	 WanLian Technology Co., Ltd
AO	NEW RELEASE	22.10.28		LINEAR	ANGLES	APPROVED	Wang_jr	22.10.28	FH254150F0-2XX2XXX02	ENDE05	
			0.0±0.35	X'REF±6'	DESIGNER	Han_Gao	22.10.28	TITLE:			
			UNIT:mm	0.00±0.25	X'±3'	DRAWN	LanXuan_Hou	22.10.28	包装规范	REV: A0	
			SIZE: A4	0.000±0.10	X'X' ±2'						