

The product using material and processing must conform to the "WI-PZ-001"HSF technical standard control requirements



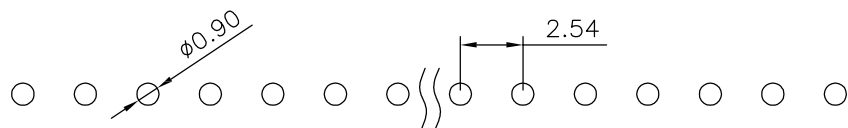
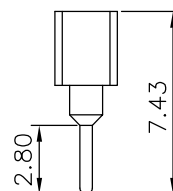
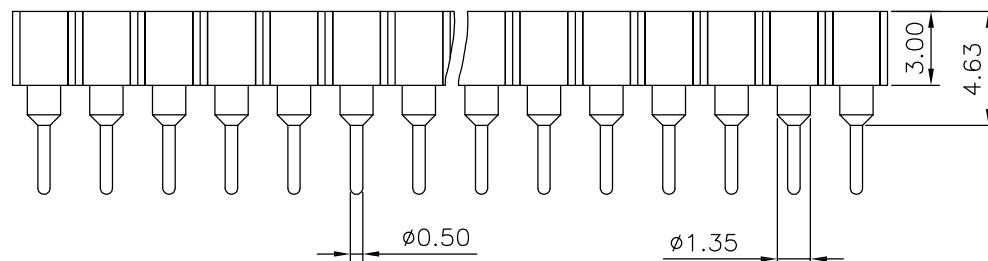
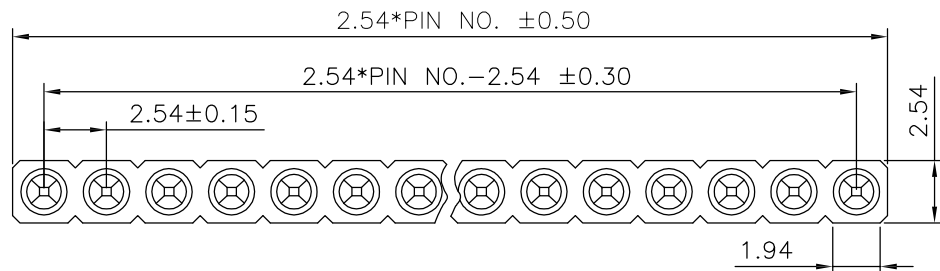
Material:
 Pin(outer sleeve): Brass,machined CuZn38Pb2
 Clip(contact 4 finger): Beryllium copper,heat treated
 Plating(outer sleeve):
 Tin plated:2μm/80μ"Ni, 5μm/200μ"Sn
 Gold Plated: 2μm/80μ"nickelfull, gold or Tin plated
 Insulator black(housing): PPS (UL94V-0)

Electrical:
 Current rating: 3Amps/contact max.
 Contact resistance: ≤4mΩ/contact
 Insulation resistance: ≥1000MΩ at V=100V
 Operating voltage: 60VAC/DC

Mechanical:
 Average insertion force with steel pin of
 Ø0.43mm/0.017": <250g
 Average withdrawal force with steel pin of
 Ø0.43mm/0.017": >90g min.
 Mechanical life cycle:min.200
 Operating temperatures: Gold Plated:-55°C to+105°C
 Tin plated:-40°C to+105°C

Soldering temperature: +260°C,10s max
 PACKAGE SPEC:Tube

P/N: MF2541 30 F 0-1 XX 1 X X X 01
 SERIES NO: _____ HOUSING: 1-PPS
 HEIGHT: _____ 30: 3.0mm COLOR: A-BLACK
 MALE FEMALE: _____ F-FEMALE PLATING: A-ALL AU G/F
 ANGLE: _____ 0-180° 1-G/F C-BRIGHT TIN
 ROW NO: _____ 1-SINGLE ROW TERMPOINT: 1-DIP
 PIN Q'PY: _____ 02~40



RECOMMENDED PCB LAYOUT
 (GENERAL TOLERANCE:±0.05)

REV.	REVISION RECORD	DATE		GENERAL TOLERANCES		SCALE: 1:1	NAME	DATE	PART.NO: MF254130F0-1XX1XXX01	DWG.NO: ENDE05	 WanLian Technology Co., Ltd
AO	NEW RELEASE	22.10.28		LINEAR	ANGLES	APPROVED	Wang_jr	22.10.28			
			UNIT:mm	X'±3'	DESIGNER	Han_Gao	22.10.28	TITLE: Pitch 2.54mm 180° FEMALE HEADER SING ROW DIP TYPE			
			SIZE: A4	0.000±0.10	X'X' ±2'	DRAWN	LanXuan_Hou		22.10.28		
									REV: A0	SHEET: 1/1	