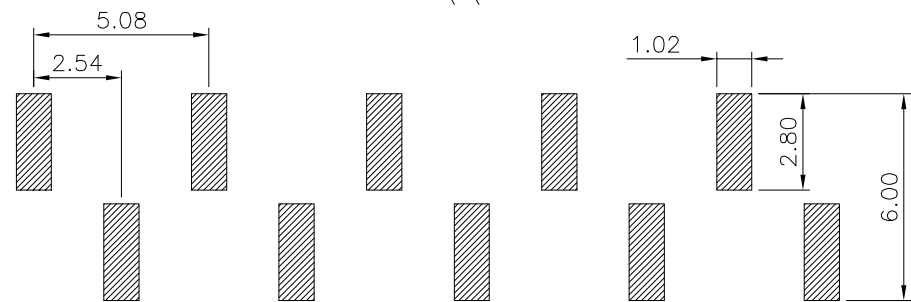
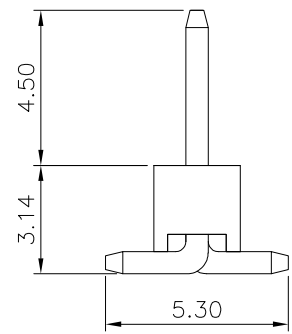
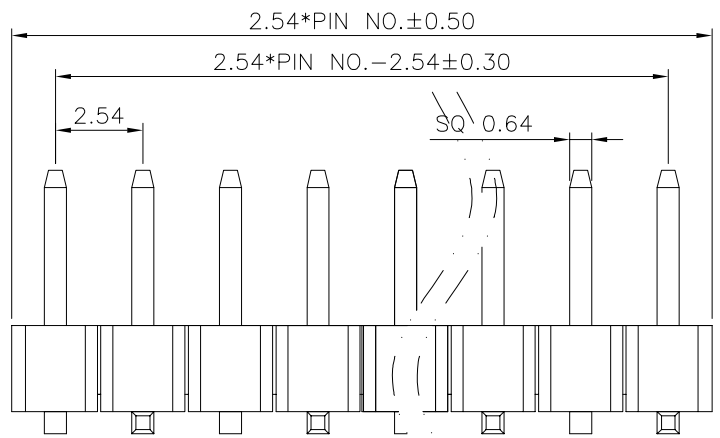
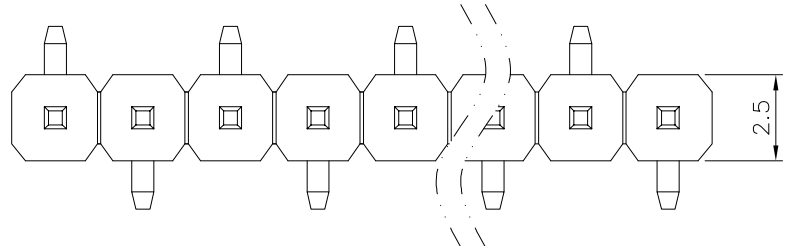


The product using material and processing must conform to the "WI-PZ-001"HSF technical standard control requirements

RoHS



RECOMMENDED P.C.B LAYOUT  
P.C.B TOLERANCE: ±0.05

NOTE:  
 1.MATERIAL SPECIFICATION:  
 1-1.HOUSING: PA6T,UL94V-0  
 1-2.CONTACTS: BRASS  
 2.PLATING SPECIFICATION:  
 2-1.CONTACTS:  
 GOLD FLASH OVER NICKEL  
 3.ELECTRICAL PERFORMANCE:  
 3-1.CURRENT RATING: 3A  
 3-2.CONTACT RESISTANCE: 30 mΩ MAX  
 3-3.INSULATION RESISTANCE: 1000MΩ Min  
 3-4.DIELECTRIC WITHSTANDING : 500V  
 4.ENVIRONMENTAL PERFORMANCE:  
 4-1.OPERATING TEMPERATURE: -40°C~+105°C.  
 5.PACKAGE SPEC: PE BAG  
 6.P/N:

PH2541 25 M 0-1 XX 2 X X X 01  
 SERIES NO: PH2541 25 M 0-1 XX 2 X X X 01  
 HEIGHT: 25: 2.5mm  
 MALE FEMALE: M-MALE  
 ANGLE: 0-180°  
 ROW NO: 1-SINGLE ROW  
 PIN Q'PY: 02~80  
 HOUSING:  
 1-PA6T  
 2-PA6T+HF  
 3-PA9T  
 COLOR:  
 A-BLACK  
 PLATING:  
 A-ALL AU G/F  
 TERMIPOINT:  
 2-SMT

REV.	REVISION RECORD	DATE		GENERAL TOLERANCES		SCALE: 1:1	NAME	DATE	PART.NO: PH254125M0-1XX2XXX01	DWG.NO: ENDE05	 WanLian Technology Co., Ltd	
AO	NEW RELEASE	21.10.15		LINEAR	ANGLES	APPROVED	Wang_jr	21.10.15				
			UNIT:mm	0.00±0.25	X'±3'	DESIGNER	Gao_Han	21.10.15	TITLE: Pitch 2.54mm 180° 单排 SMT+CAP 单塑排针	REV: A0		SHEET: 1/1
			SIZE: A4	0.000±0.10	X'X' ±2'	DRAWN	Gao_Han	21.10.15				