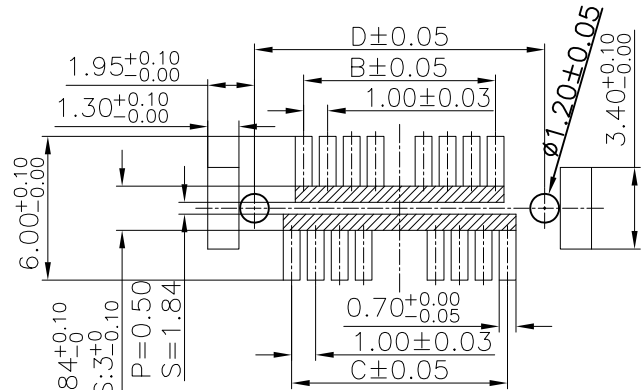
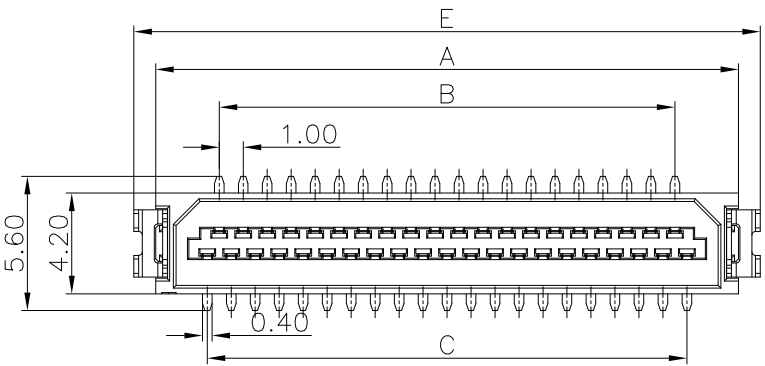


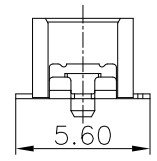
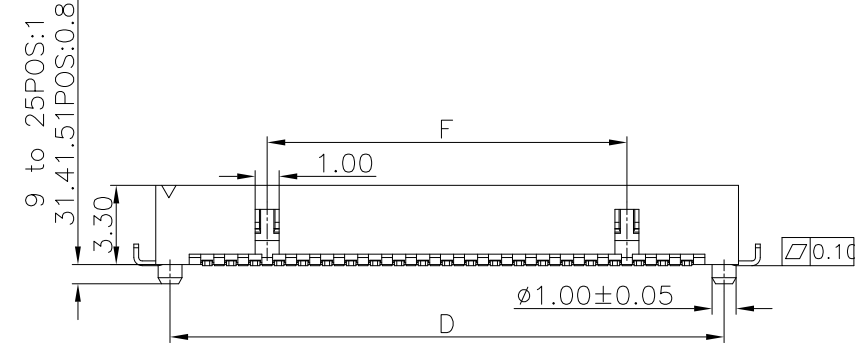
The product using material and processing must conform to the "WI-PZ-001"HSF technical standard control requirements

RoHS+HF



RECOMMENDED PCB LAYOUT(TOP VIEW)

9~25POS:1.84±0.10  
31.41.51POS:3±0.10  
P=0.50  
S=1.84



- NOTE:
- MATERIAL SPECIFICATION:
    - HOUSING:LCP, UL94V-0 COLOUR: WHITE
    - CONTACTS:PHOSPHOR BRONZE
    - SHELL:BARSS
  - PLATING SPECIFICATION:
    - CONTACTS: SN PLATED OR AU PLATED ON CONTACT AREA.
    - SHELL:SN PLATED.
  - MECHANICAL PERFORMANCE:
    - INSERTION FORCE: 0.12kgf MAX
    - REMOVAL FORCE: 0.08kgf MIN
    - DURABILITY: 30 CYCLES.
  - ELECTRICAL PERFORMANCE:
    - RATED CURRENT : 0.5A  
RATED VOLTAGE : 150V AC
    - INSULATION RESISTANCE: 500MΩ MIN  
CONTACT RESISTANCE : 50mΩ MAX.
    - WITHSTANDING VOLTAGE: 250V AC
  - ENVIRONMENTAL PERFORMANCE:
    - OPERATING TEMPERATURE: -45°C~+125°C.
  - PACKAGE SPEC:REEL

7.P/N: B1001 33 M 0-2 XX 2 X X 101

SERIES NO: \_\_\_\_\_

HEIGHT: \_\_\_\_\_  
33: 3.3mm

MALE FEMALE: \_\_\_\_\_  
M-MALE

ANGLE: \_\_\_\_\_  
0-180°

ROW NO: \_\_\_\_\_  
2-DOUBLE ROW

COLOR:  
A-BLACK  
K-WHITE  
S-NATURE

PLATING:  
A-ALL AU G/F  
C-BRIGHE TIN  
1-G/F

TERMIPOINT:  
2-SMT

PIN Q' PY:  
09~51

Ordering Information & Dimensions

Circuit	Dimensions(mm)					
	A	B	C	D	E	F
09	8.3	3	4	7.1	10.1	0
11	9.3	4	5	8.1	11.1	0
13	10.3	5	6	9.1	12.1	0
15	11.3	6	7	10.1	13.1	0
17	12.3	7	8	11.1	14.1	0
19	13.3	8	9	12.1	15.1	0
21	14.3	9	10	13.1	16.1	5
23	15.3	10	11	14.1	17.1	6
25	16.3	11	12	15.1	18.1	7
31	19.3	14	15	18.1	21.1	10
41	24.3	19	20	23.1	26.1	15
51	29.3	24	25	28.1	31.1	20

REV.	REVISION RECORD	DATE		GENERAL TOLERANCES		SCALE: 1:1	NAME	DATE	PART.NO: B100133M0-2XX2XX101	DWG.NO: ENDE05	
A0	NEW RELEASE	21.01.13		LINEAR	ANGLES	APPROVED					
			UNIT:mm	0.00±0.25	X'±3°	DESIGNER			TITLE: Board to Board Pitch1.0 H3.3mm 单槽双排 带定位柱带焊片 SMT型公座		REV: A0
			SIZE: A4	0.000±0.10	X'X' ±2°	DRAWN					SHEET: 1/2