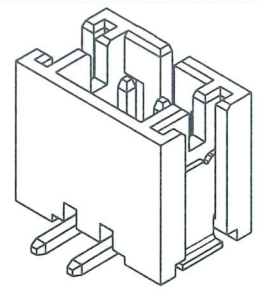
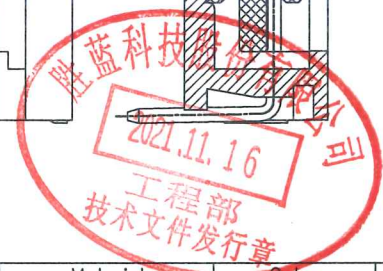


Specifications:  
 Rated Voltage : 100V AC/DC  
 Rated Current : 2A AC,DC  
 Withstand Voltage : 800V AC/minute  
 Contact Resistance : 10mΩ(MAX.)  
 Insulation Resistance : 1000MΩ(MIN.)  
 Temperature Range : -25°C~+85°C  
 Cap: Thermal Plasticity Resin,UL94V-0  
 The product using material and processing must conform to the "WI-PZ-142"HSF technical standard requirements



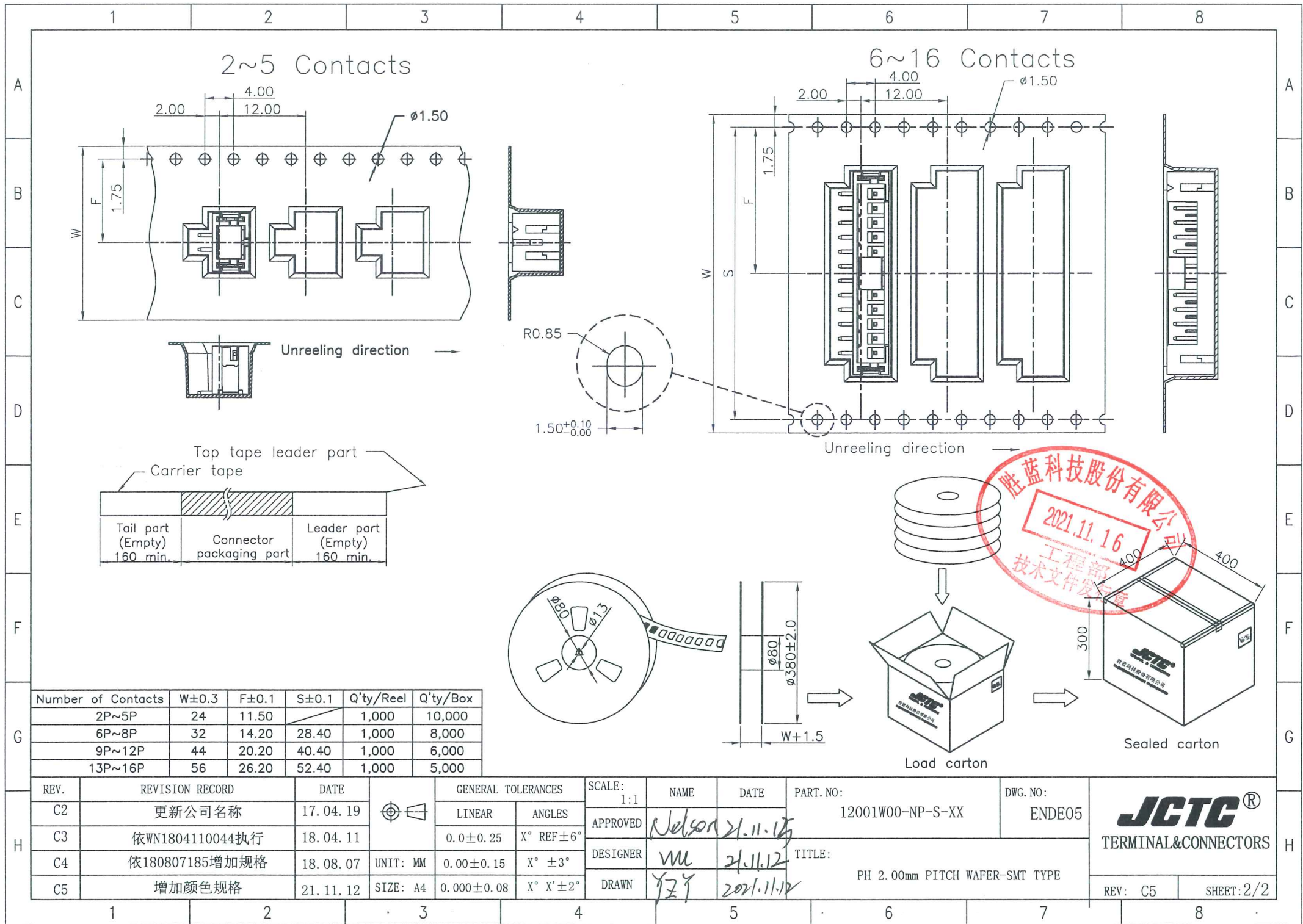
PART NO.	Dimensions	
	A	B
2P	--	8.00
3P	4.00	10.00
4P	6.00	12.00
5P	8.00	14.00
6P	10.00	16.00
7P	12.00	18.00
8P	14.00	20.00
9P	16.00	22.00
10P	18.00	24.00
11P	20.00	26.00
12P	22.00	28.00
13P	24.00	30.00
14P	26.00	32.00
15P	28.00	34.00
16P	30.00	36.00



- 12001W00-NPX-S-XX-HF-R  
 ① ② ③④⑤⑥ ⑦ ⑧
- ① Series No.
  - ② W90 : Side Contact  
W00 : Up Contact
  - ③ No. of Circuits
  - ④ X: Colour
  - ⑤ S: SMT Type
  - ⑥ H1:H1 Type H2:H2 Type H3:H3 Type  
5A: Gold-flash 3E: Matte-Tin
  - ⑦ HF: Halogen Free
  - ⑧ R: Tape & Reel(With Cap)

Part No.	Material	Color	PIN Material	Solder Tabs
12001W00-NP-S-R	Nylon 6T,UL94V-0	Natural(Beige)	Brass/Tin-plated	Brass/Tin-plated
12001W00-NP-S-HF-R	LCP,UL94V-0	Natural(Beige)	Brass/Tin-plated	Brass/Tin-plated
12001W00-NPA-S-HF-R	LCP,UL94V-0	Black	Brass/Tin-plated	Brass/Tin-plated
12001W00-NP-S-5A-HF-R	LCP,UL94V-0	Natural(Beige)	Brass/Gold-flash	Brass/Tin-plated
12001W00-NP-S-3E-HF-R	LCP,UL94V-0	Natural(Beige)	Brass/Matte-Tin	Brass/Matte-Tin
12001W00-NP-S-H1-HF-R	HTN,UL94V-0	Natural(Beige)	Brass/Tin-plated	Brass/Tin-plated
12001W00-NPA-S-H1-HF-R	HTN,UL94V-0	Black	Brass/Tin-plated	Brass/Tin-plated
12001W00-NPG-S-H2-HF-R	Nylon 9T,UL94V-0	Blue	Brass/Tin-plated	Brass/Tin-plated
12001W00-NPE-S-H3-HF-R	Nylon 10T,UL94V-0	Yellow	Brass/Tin-plated	Brass/Tin-plated
12001W00-NPF-S-H3-HF-R	Nylon 10T,UL94V-0	Green	Brass/Tin-plated	Brass/Tin-plated

REV.	REVISION RECORD	DATE	UNIT: MM	GENERAL TOLERANCES		SCALE	NAME	DATE	PART NO.	DWG NO.	TITLE
C2	更新公司名称	17.04.19		LINEAR	ANGLES	1:1 <td></td> <td></td>					
C3	依WN1804110044执行	18.04.11	0.0±0.25	X° REF±6°	APPROVED	Nelson	21.11.15	12001W00-NP-S-XX	ENDE05	JCTC® TERMINAL&CONNECTORS	
C4	依180807185增加规格	18.08.07	0.00±0.15	X° ±3°	DESIGNER	WU	21.11.12				PH 2.00mm PITCH WAFER-SMT TYPE
C5	增加颜色规格	21.11.12	0.000±0.08	X° X' ±2°	DRAWN	YZY	2021.11.12	REV	C5	SHEET	



Number of Contacts	W±0.3	F±0.1	S±0.1	Q'ty/Reel	Q'ty/Box
2P~5P	24	11.50		1,000	10,000
6P~8P	32	14.20	28.40	1,000	8,000
9P~12P	44	20.20	40.40	1,000	6,000
13P~16P	56	26.20	52.40	1,000	5,000

REV.	REVISION RECORD	DATE		GENERAL TOLERANCES	SCALE:	NAME	DATE	PART. NO.:	DWG. NO.:
C2	更新公司名称	17.04.19	☉	LINEAR	1:1	Nelson	21.11.15	12001W00-NP-S-XX	ENDE05
C3	依WN1804110044执行	18.04.11		ANGLES	APPROVED				
C4	依180807185增加规格	18.08.07	UNIT: MM	0.0±0.25	X° REF±6°	DESIGNER	21.11.12	TITLE:	PH 2.00mm PITCH WAFER-SMT TYPE
C5	增加颜色规格	21.11.12	SIZE: A4	0.00±0.15	X° ±3°	DRAWN	2021.11.12		

REV.	REVISION RECORD	DATE		GENERAL TOLERANCES	SCALE:	NAME	DATE	PART. NO.:	DWG. NO.:
C2	更新公司名称	17.04.19	☉	LINEAR	1:1	Nelson	21.11.15	12001W00-NP-S-XX	ENDE05
C3	依WN1804110044执行	18.04.11		ANGLES	APPROVED				
C4	依180807185增加规格	18.08.07	UNIT: MM	0.0±0.25	X° REF±6°	DESIGNER	21.11.12	TITLE:	PH 2.00mm PITCH WAFER-SMT TYPE
C5	增加颜色规格	21.11.12	SIZE: A4	0.00±0.15	X° ±3°	DRAWN	2021.11.12		

REV: C5	SHEET: 2/2