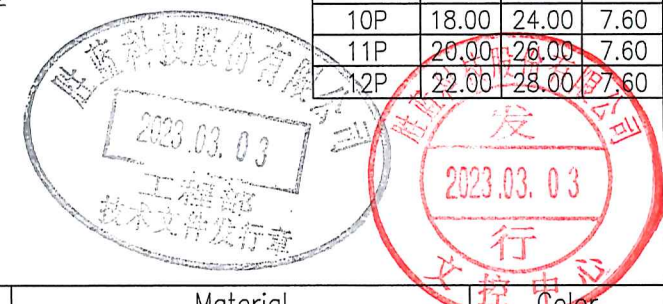


Circuits Part No	Dimensions		
	A	B	C
2P	--	8.00	0.78
3P	4.00	10.00	1.20
4P	6.00	12.00	1.50
5P	8.00	14.00	1.50
6P	10.00	16.00	1.50
7P	12.00	18.00	1.50
8P	14.00	20.00	1.50
9P	16.00	22.00	1.50
10P	18.00	24.00	7.60
11P	20.00	26.00	7.60
12P	22.00	28.00	7.60

- 12002W00-NP-SA-NK-R
 ① ② ③ ④ ⑤ ⑥ ⑦
- ① Series No.
 - ② W90 : Side Contact
W00 : Up Contact
 - ③ No. of Circuits
 - ④ S : SMT TYPE
 - ⑤ A : A TYPE
 - ⑥ NK : No Mark
 - ⑦ R : Tape & Reel(With Cap)

Specifications:
 Rated Voltage : 250V AC/DC
 Rated Current : 3A AC,DC
 Withstand Voltage : 800V AC/minute
 Contact Resistance : 10mΩ(MAX.)
 Insulation Resistance : 1000MΩ(MIN.)
 Temperature Range : -25°C~+85°C
 The product using material and processing must conform to the "WI-PZ-142"HSF technical standard control requirements



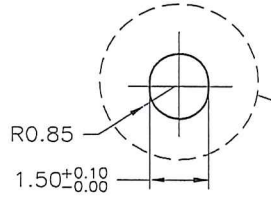
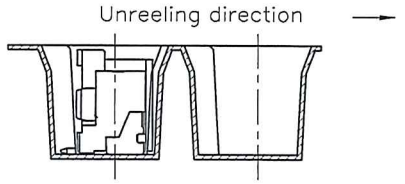
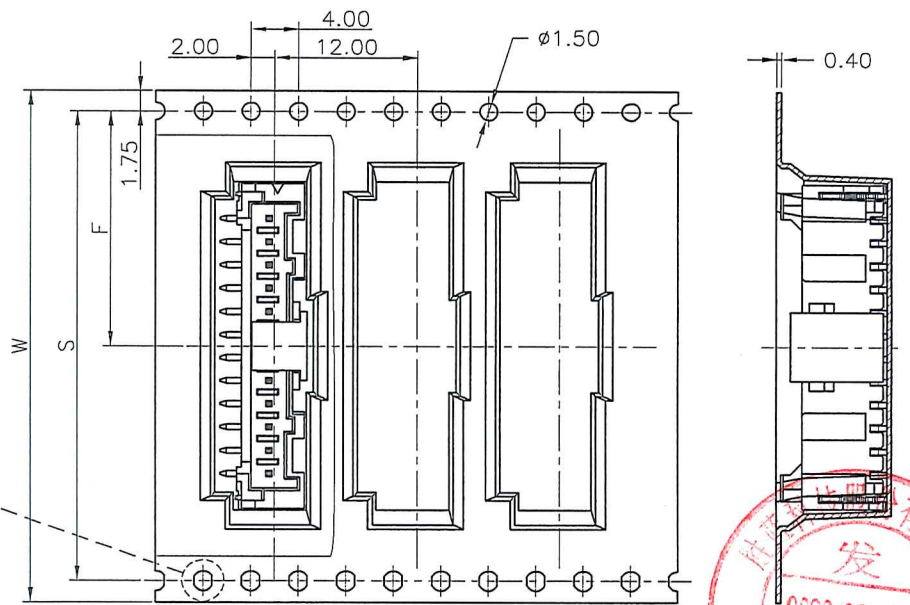
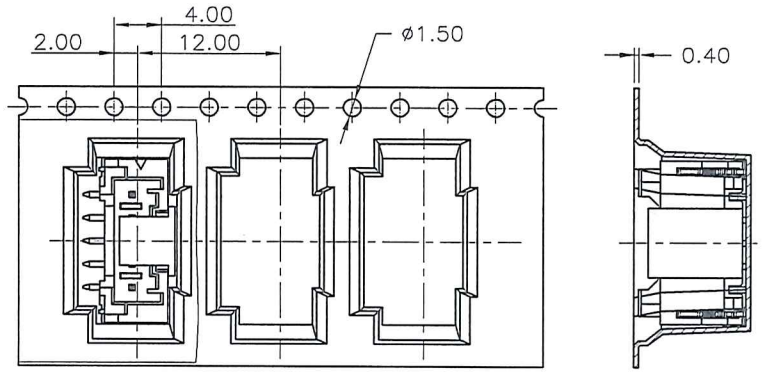
No.	Description	Material	Color
a	Insulator	High temperature plastic,UL94V-0	Natural(Beige)
b	PIN	Brass/Tin-plated	--
c	Solder Tabs	Brass/Tin-plated	--
d	Cap	Nylon 6T,UL94V-0	Natural(Beige)

REV.	REVISION RECORD	DATE	UNIT: MM	GENERAL TOLERANCES		SCALE:	NAME	DATE	JCTC® 胜蓝科技股份有限公司 TERMINAL&CONNECTORS 东莞市富智达电子科技有限公司	PART. NO:	
A0	新图面发行	15.12.16		LINEAR	ANGLES	1:1				12002W00-NP-SA-NK	
A1	更新公司名称	17.12.27	SIZE: A4	0.0±0.25	X° REF±6°	APPROVED	Nelson	23.02.28	DWG. NO:	ENDE05	
A2	依ECCR20221214464 A2 1处	23.02.28		0.00±0.15	X° ±3°	DESIGNER	VM	23.02.28			
				0.000±0.08	X° X'±2°	DRAWN	BWK	23.02.28	TITLE: PA 2.00mm PITCH 180° SMT WAFER		

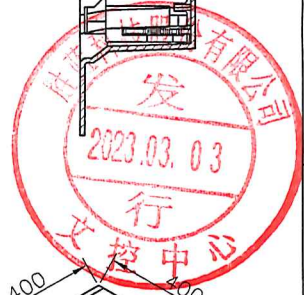
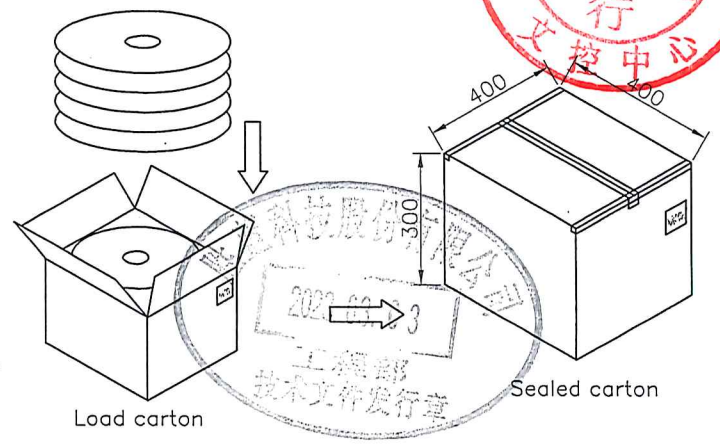
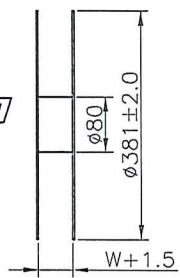
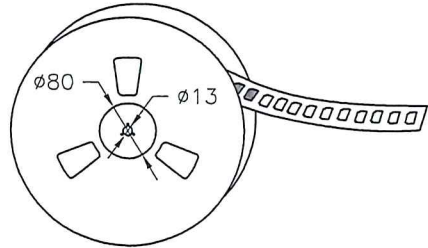
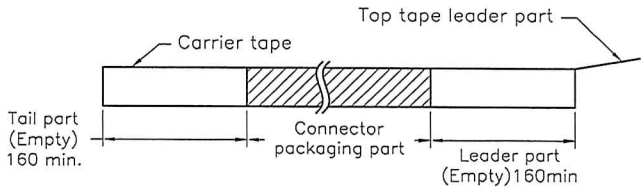
1 2 3 4 5 6 7 8

2~4 Contacts

5~12 Contacts



Unreeing direction →



Number of Contacts	W±0.3	F±0.1	S±0.1	Q'ty/Reel	Q'ty/Box
2~4P	24	11.50		750pcs	7500pcs
▲ 5~8P	32	14.20	28.40	750pcs	6000pcs
9~12P	44	20.20	40.40	750pcs	4500pcs

REV.	REVISION RECORD	DATE
A0	新图面发行	15.12.16
A1	更新公司名称	17.12.27
A2	依ECR20221214464▲1处	23.02.28

GENERAL TOLERANCES		SCALE:	NAME	DATE
LINER	ANGLES	1:1		
0.0±0.25	X° REF±6°	APPROVED	Nelson	23.02.28
0.00±0.15	X° ±3°	DESIGNER	ML	23.02.28
0.000±0.08	X° X'±2°	DRAWN	BWK	23.02.28

JCTC 胜蓝科技股份有限公司
 TERMINAL&CONNECTORS 东莞市富智达电子科技有限公司
 TITLE: PA 2.00mm PITCH 180° SMT WAFER

PART. NO:	12002W00-NP-SA-NK
DWG. NO:	ENDE05
REV:	A2
SHEET:	2/2

1 2 3 4 5 6 7 8