

Circuits Part No	Dimensions		
	A	B	C
4P	6.00	12.00	1.50
5P	8.00	14.00	1.50
6P	10.00	16.00	1.50
7P	12.00	18.00	1.50
8P	14.00	20.00	1.50
9P	16.00	22.00	1.50
10P	18.00	24.00	7.60
11P	20.00	26.00	7.60
12P	22.00	28.00	7.60
13P	24.00	30.00	7.60
14P	26.00	32.00	7.60
15P	28.00	34.00	7.60
16P	30.00	36.00	7.60

Specifications:
 Rated Voltage : 250V AC/DC
 Rated Current : 3A AC, DC
 Withstand Voltage : 800V AC/minute
 Contact Resistance : 10mΩ (MAX.)
 Insulation Resistance : 1000MΩ (MIN.)
 Temperature Range : -25° C~+85° C



12002 W90- NP- S A- HF- R
 ① ② ③ ④ ⑤ ⑥ ⑦

- ① Series No.
- ② W90 : Side Contact
W00 : Up Contact
- ③ No. of Circuits
- ④ S : SMT TYPE
- ⑤ A : A TYPE
- ⑥ HF : Halogen Free
- ⑦ R : Tape & Reel (Without Cap)

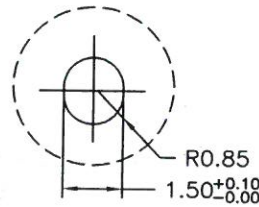
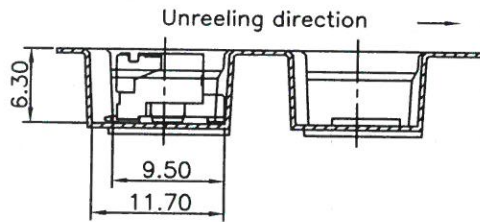
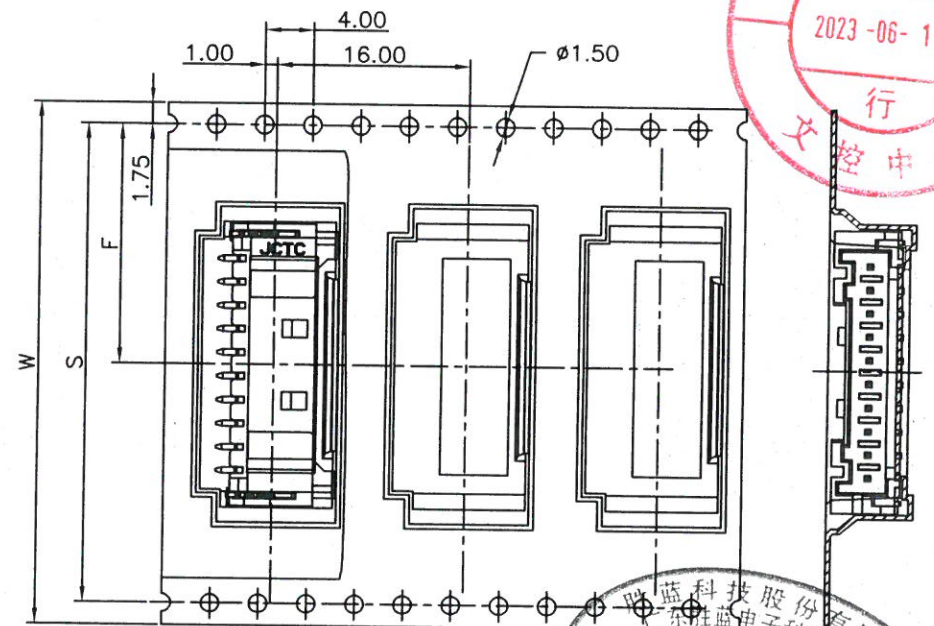
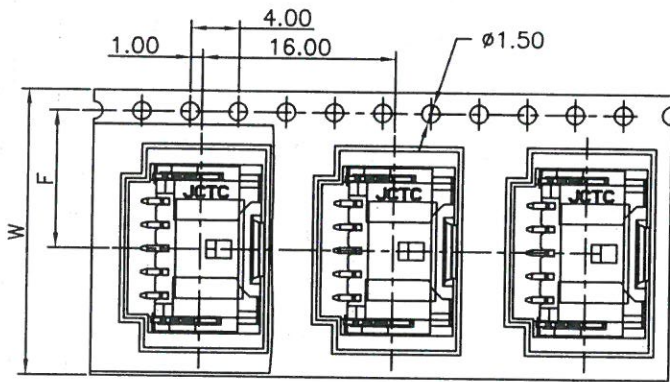
Part No.	Insulator	PIN	Solder Tabs
12002W90-NP-SA-HF-R	High temperature plastic, UL94V-0/Natural (Beige)	Brass/Tin-plated	Brass/Tin-plated
12002W90-NP-SA-5A-HF-R		Brass/Gold Flash	Brass/Gold Flash

REV.	REVISION RECORD	DATE	GENERAL TOLERANCES	SCALE:	NAME	DATE	PART. NO.:	DWG. NO.:	JCTC® TERMINAL&CONNECTORS
A0	新图面发行	21.01.07	LINEAR	1:1			12002W90-NP-SA-HF-R	ENDE05	
A1	依YB20230223005新增规格	23.03.07	ANGLES	APPROVED	VM	23.03.07			
			0.0±0.25	DESIGNER	VM	23.03.07	TITLE:		
			0.00±0.15	DRAWN	白万康	23.03.07	PA 2.00mm PITCH 90° SMT WAFER		
			0.000±0.08						

REV: A1 SHEET: 1/2

2~5 Contacts

6~12 Contacts



Unreeling direction

Pcs/Box

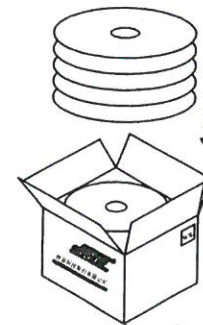
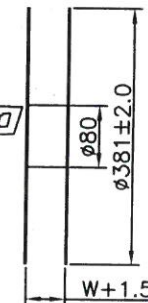
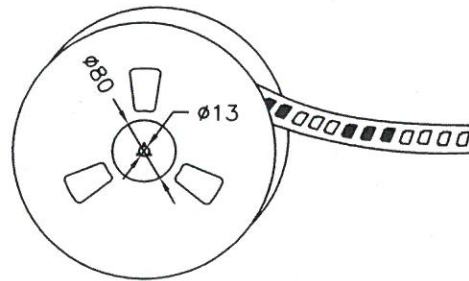
Top tape leader part

Carrier tape

20pcs (Empty)

Connector packaging part

20pcs (Empty)



Load carton

Sealed carton

Number of Contacts	W±0.3	F±0.1	S±0.1	Pcs/Reel	Pcs/Box
2~5P	24	11.50		800	8000
6P, 7P	32	14.20	28.40	800	6400
8~12P	44	20.20	40.40	800	4800

REV.	REVISION RECORD	DATE	UNIT: MM
A0	新图面发行	21.01.07	
A1	依YB20230223005新增规格	23.03.07	

GENERAL TOLERANCES	
LINEAR	ANGLES
0.0±0.25	X° REF±6°
0.00±0.15	X° ±3°
0.000±0.08	X° X'±2°

SCALE:	NAME	DATE
1:1		
APPROVED	<i>ml</i>	23.03.07
DESIGNER	<i>ml</i>	23.03.07
DRAWN	白万康	23.03.07

PART. NO:	DWG. NO:
12002W90-NP-SA-HF-R	ENDE05
TITLE:	
PA 2.00mm PITCH 90° SMT WAFER	

JCTC®	
TERMINAL&CONNECTORS	
REV: A1	SHEET: 2/2

