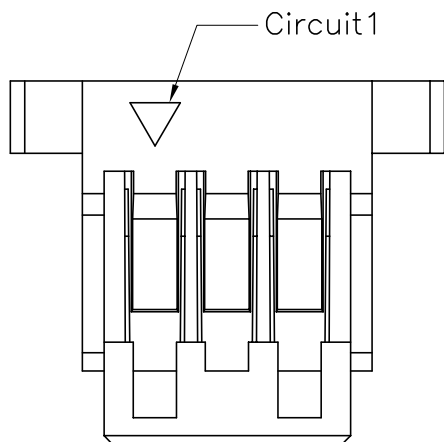
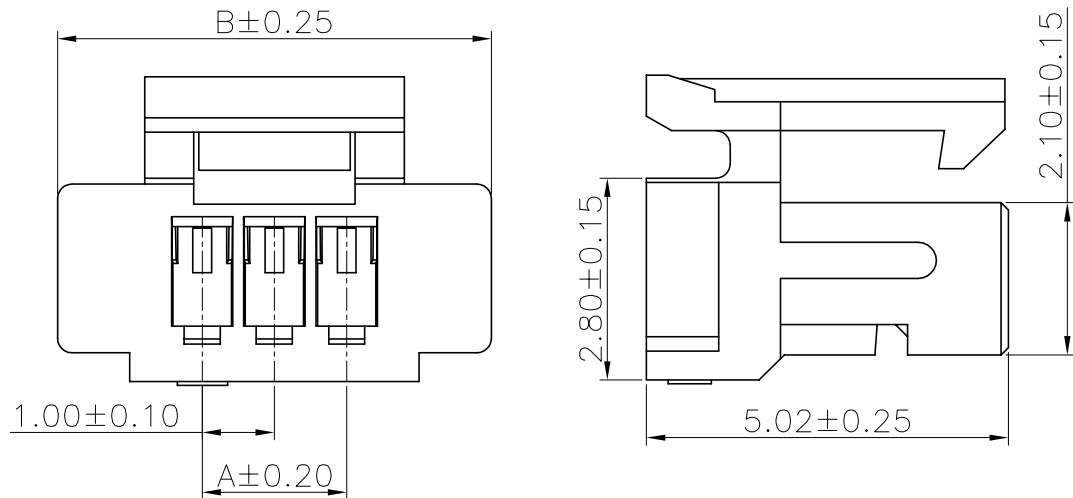


The product using material and processing must conform to the "WI-PZ-001"HSF technical standard control requirements

RoHS+HF



NOTE:

- 1.MATERIAL SPECIFICATION:
1-1.HOUSING: PA66,UL94V-0
- 2.ELECTRICAL PERFORMANCE:
2-1.INSULATION RESISTANCE: 100MΩ Min
2-1.DIELECTRIC WITHSTANDING : 500V
- 3.ENVIRONMENTAL PERFORMANCE:
3-1.OPERATING TEMPERATURE: -25°C~+85°C.
- 4.PACKAGE SPEC: PE BAG
- 5.P/N:

SERIES NO: A1002 H 1 M-1 XX X 0
 CONNECTOR: H-HOUSING
 TYPE CODE: M-1
 MALE FEMALE: M-MALE
 COLOR: A-BLACK, K-WHITE
 PIN Q'PY: 02~12
 ROW NO: 1-SINGLE ROW

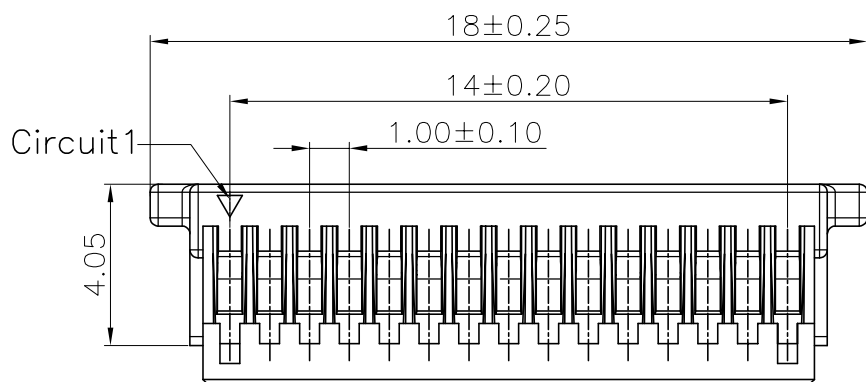
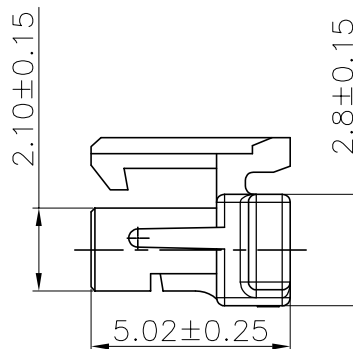
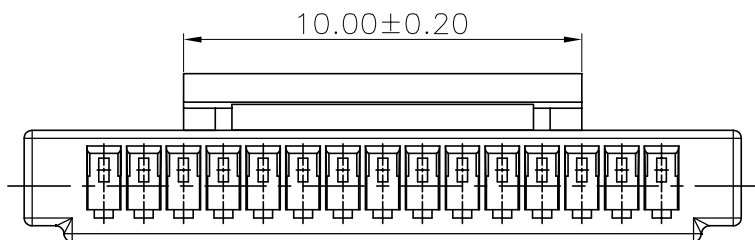
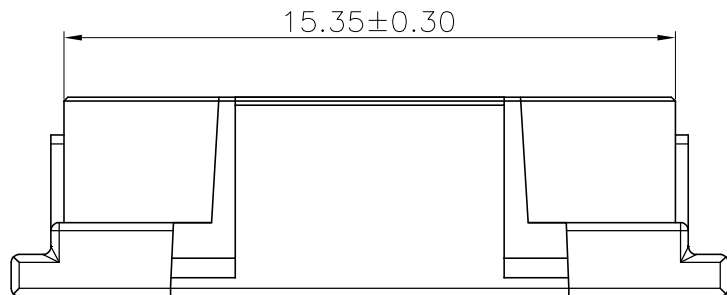
Ordering Information & Dimensions

| Circuit | Dimensions(mm) | | Circuit | Dimensions(mm) | |
|---------|----------------|-------|---------|----------------|-------|
| | A | B | | A | B |
| 02 | 1.00 | 5.00 | 08 | 7.00 | 11.00 |
| 03 | 2.00 | 6.00 | 09 | 8.00 | 12.00 |
| 04 | 3.00 | 7.00 | 10 | 9.00 | 13.00 |
| 05 | 4.00 | 8.00 | 11 | 10.00 | 14.00 |
| 06 | 5.00 | 9.00 | 12 | 11.00 | 15.00 |
| 07 | 6.00 | 10.00 | | | |

| REV. | REVISION RECORD | DATE | UNIT:mm | GENERAL TOLERANCES | | SCALE: 1:1 | NAME | DATE | PART.NO: | DWG.NO: |  WanLian Technology Co., Ltd |
|------|-----------------|----------|---------|--------------------|--------------------|--------------------|-------------|----------|--------------------------------------|----------------|--|
| AO | NEW RELEASE | 21.11.17 | | SIZE: A4 | LINEAR 0.0±0.35 | ANGLES X°REF±6° | APPROVED | Wang_jr | 21.11.17 | A1002H1M-1XXX0 | |
| | | | | 0.00±0.25 | X°±3° | DESIGNER | Han_Gao | 21.11.17 | TITLE: Pitch 1.00mm 180°SH 单排带扣胶壳 | | REV: A0 |
| | | | | 0.000±0.10 | X°X' ±2° | DRAWN | Zijun_Huang | 21.11.17 | | | SHEET: 1/3 |

The product using material and processing must conform to the "WI-PZ-001"HSF technical standard control requirements

RoHS+HF



NOTE:

- 1.MATERIAL SPECIFICATION:
1-1.HOUSING: PA66,UL94V-0
- 2.ELECTRICAL PERFORMANCE:
2-1.INSULATION RESISTANCE: 100MΩ Min
2-1.DIELECTRIC WITHSTANDING : 500V
- 3.ENVIRONMENTAL PERFORMANCE:
3-1.OPERATING TEMPERATURE: -25°C~+85°C.
- 4.PACKAGE SPEC: PE BAG
- 5.P/N:

SERIES NO: A1002 H 1 M-1 XX X 0
 CONNECTOR: H-HOUSING
 TYPE CODE: M-MALE
 COLOR: A-BLACK, K-WHITE
 PIN Q'PY: 02~12
 ROW NO: 1-SINGLE ROW

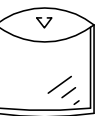
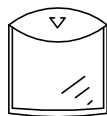
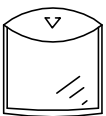
| | | | | | | | | | | | |
|------|-----------------|----------|----------|--------------------|----------|---------------|-------------|----------|----------------------------------|---------|---------------------------------|
| REV. | REVISION RECORD | DATE | | GENERAL TOLERANCES | | SCALE: 1:1 | NAME | DATE | PART.NO: | DWG.NO: | WanLian Technology Co., Ltd |
| AO | NEW RELEASE | 21.11.17 | | LINEAR | ANGLES | APPROVED | Wang_jr | 21.11.17 | A1002H1M-1XXX0 | ENDE05 | |
| | | | UNIT:mm | 0.0±0.35 | X'REF±6° | DESIGNER | Han_Gao | 21.11.17 | TITLE: | | REV: A0 |
| | | | SIZE: A4 | 0.00±0.25 | X'±3° | DRAWN | Zijun_Huang | 21.11.17 | Pitch 1.00mm 180°SH 单排带扣胶壳 15PIN | | |
| | | | | 0.00±0.10 | X'X' ±2° | | | | | | |

The product using material and processing must conform to the "WI-PZ-001"HSF technical standard control requirements

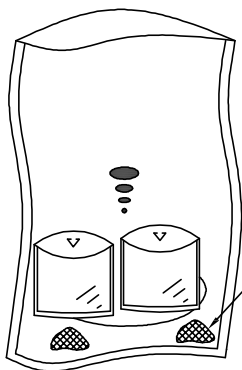
RoHS+HF



2000PCS/BAG

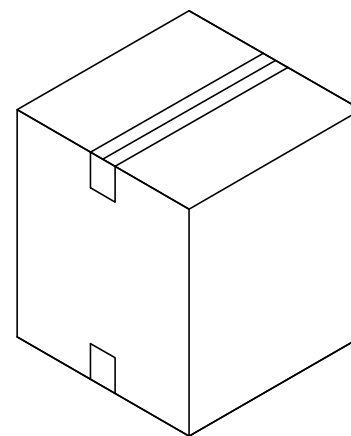
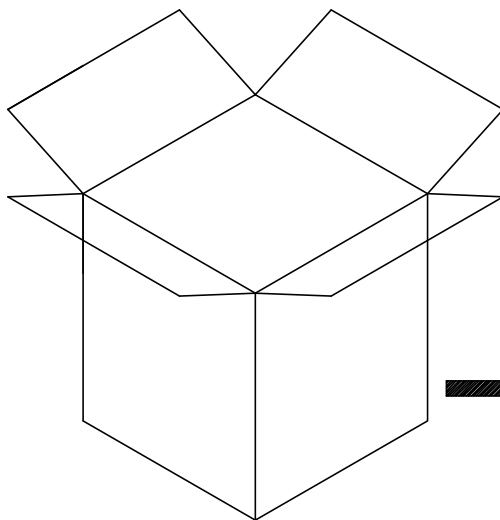


1. 纸箱装箱以不超过装箱线为准, 空余位置用塑料泡沫及保尼龙填充;
2. 因生产Pin位未齐全, 每袋与整箱包装数量仅供参考, 具体包装数量以实际出货为准, 或批量出货更新后为准;



PE 防水袋

干燥剂



| | | | | | | | | | | | |
|------|-----------------|----------|----------|--------------------|----------|---------------|-------------|----------|----------------------------------|------------|---------------------------------|
| REV. | REVISION RECORD | DATE | | GENERAL TOLERANCES | | SCALE: 1:1 | NAME | DATE | PART.NO: | DWG.NO: | WanLian Technology Co., Ltd |
| AO | NEW RELEASE | 21.11.17 | | LINEAR | ANGLES | APPROVED | Wang_jr | 21.11.17 | A1002H1M-1XXX0 | ENDE05 | |
| | | | 0.0±0.35 | X'REF±6° | DESIGNER | Han_Gao | 21.11.17 | TITLE: | | | |
| | | | UNIT:mm | 0.00±0.25 | X'±3' | DRAWN | Zijun_Huang | 21.11.17 | Pitch 1.00mm 180°SH 单排带扣胶壳 15PIN | | |
| | | | SIZE: A4 | 0.000±0.10 | X'X' ±2' | | | | REV: A0 | SHEET: 3/3 | |