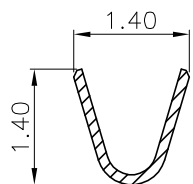
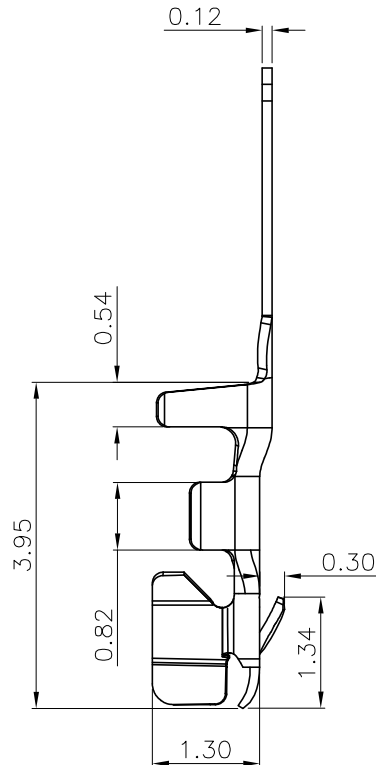
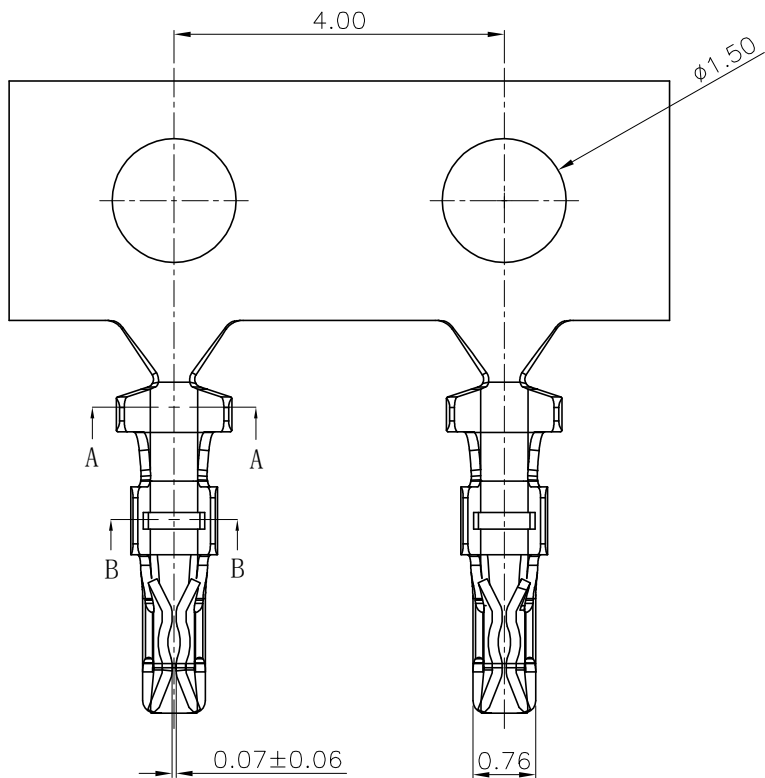
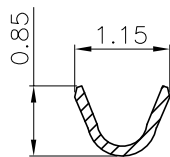


The product using material and processing must conform to the "WI-PZ-142"HSF technical standard control requirements

RoHS



SECTION A-A

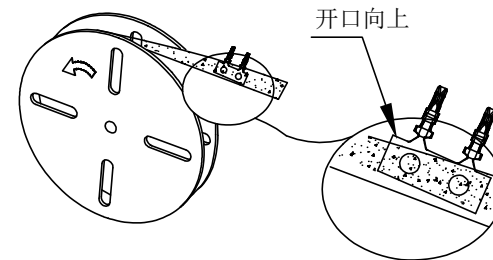


SECTION B-B

NOTE:


- 1.MATERIAL SPECIFICATION:
1-1.TERMINAL:PHOSPHOR BRONZE
- 2.PLATING SPECIFICATION:
2-1.TERMINAL:
TIN PLATED OVER ALL.
- 3.ELECTRICAL PERFORMANCE:
3-1. RATED CURRENT : 1A AC,DC
3-2.INSULATION RESISTANCE: 100MΩ MIN
3-3.CONTACT RESISTANCE : 20mΩ(MAX.)
3-4.WITHSTANDING VOLTAGE: 500V AC/minute
- 4.ENVIRONMENTAL PERFORMANCE:
OPERATING TEMPERATURE: -25°C~+85°C.
- 5.P/N:

SERIES NO: A1002 T F X-X
CONNECTOR: T-TERMINAL
MALE FEMALE: F-FEMALE
PLATING:
1-G/F
A-ALL AU G/F
C-BRIGHT TIN
H-ALL-AU 15U"
METAL:
P-PHOSPHOR BRONZE
B-BRASS



Ordering Information & Specifications

Wire Range	Qty/reel
AWG28#-32#	20,000pcs

REV.	REVISION RECORD	DATE	UNIT:mm	GENERAL TOLERANCES		SCALE: 1:1	NAME	DATE	PART.NO:	DWG.NO:	 WanLian Technology Co., Ltd
A0	NEW RELEASE	21.01.13		LINEAR	ANGLES	APPROVED	Wang_jr	21.01.13	A1002TFX-X	ENDE05	
			0.0±0.35	X°REF±6°	DESIGNER	Ding_bo	21.01.13	TITLE:		REV: A0	SHEET: 1/1
			0.00±0.25	X°±3°	DRAWN	Ou_jian	21.01.13	Pitch1.0mm SH端子 AWG#28~#32			
			0.000±0.10	X°X' ±2°							