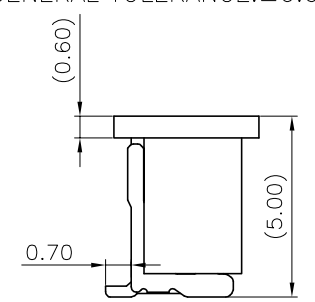
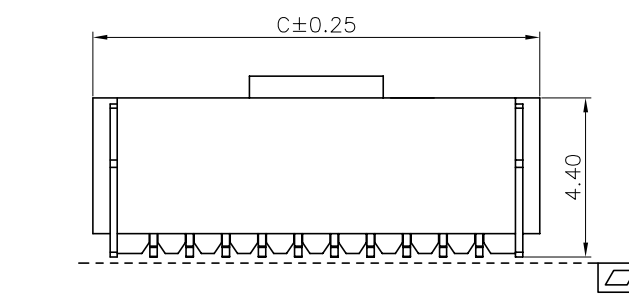
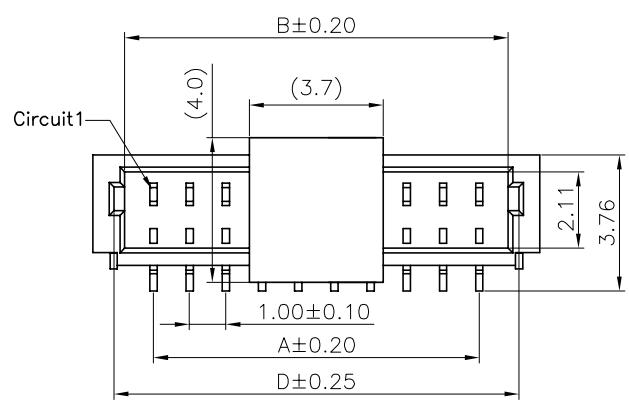
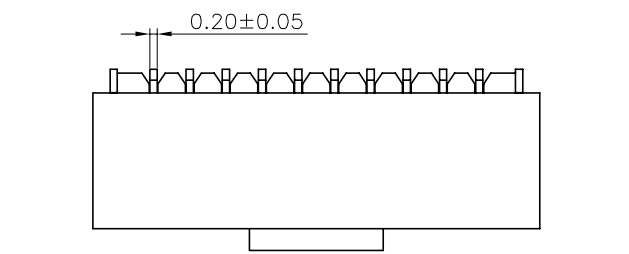
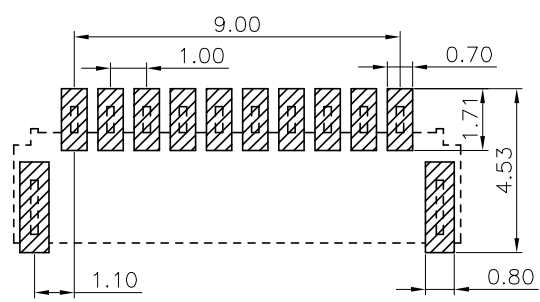
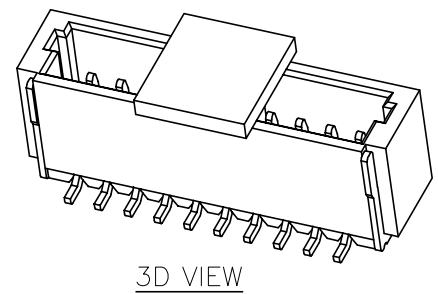
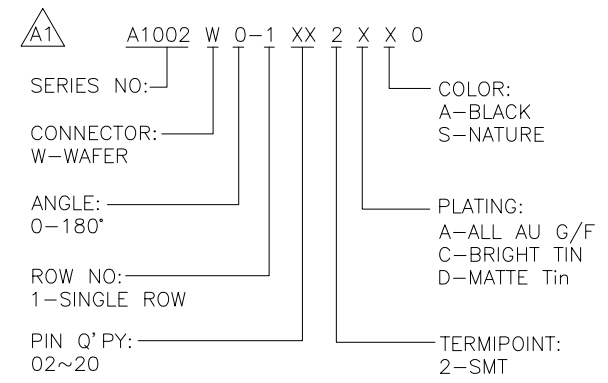


The product using material and processing must conform to the "WI-PZ-142"HSF technical standard control requirements

RoHS+HF

NOTE:

- MATERIAL SPECIFICATION:
 - HOUSING:LCP, UL94V-0
 - SOLDERING LUG:PHOSPHOR BRONZE
 - CONTACTS:PHOSPHOR BRONZE
 - CAP:LCP, UL94V-0
- PLATING SPECIFICATION:
 - CONTACTS: TIN/AU PLATED OVER ALL.
- ELECTRICAL PERFORMANCE:
 - RATED CURRENT : 1A AC,DC
 - INSULATION RESISTANCE: 100MΩ MIN
 - CONTACT RESISTANCE : 20mΩ(MAX.)
 - WITHSTANDING VOLTAGE: 500V AC/minute
- ENVIRONMENTAL PERFORMANCE:
 - OPERATING TEMPERATURE: -25°C~+85°C.
- PACKAGE SPEC: REEL
- P/N:



Circuit	Dimensions(mm)				Circuit	Dimensions(mm)			
	A	B	C	D		A	B	C	D
02P	---	2.5	4.3	3.2	12P	11.0	12.6	14.3	13.2
03P	2.0	3.6	5.3	4.2	13P	12.0	13.6	15.3	14.2
04P	3.0	4.5	6.3	5.2	14P	13.0	14.6	16.3	15.2
05P	4.0	5.5	7.3	6.2	15P	14.0	15.6	17.3	16.2
06P	5.0	6.5	8.3	7.2	16P	15.0	16.6	18.3	17.2
07P	6.0	7.6	9.3	8.2	17P	16.0	17.6	19.3	18.2
08P	7.0	8.5	10.3	9.2	18P	17.0	18.6	20.3	19.2
09P	8.0	9.6	11.3	10.2	19P	18.0	19.6	21.3	20.2
10P	9.0	10.6	12.3	11.2	20P	19.0	20.6	22.3	21.2
11P	10.0	11.6	13.3	12.2					

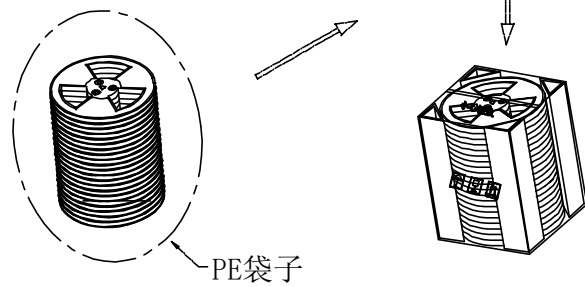
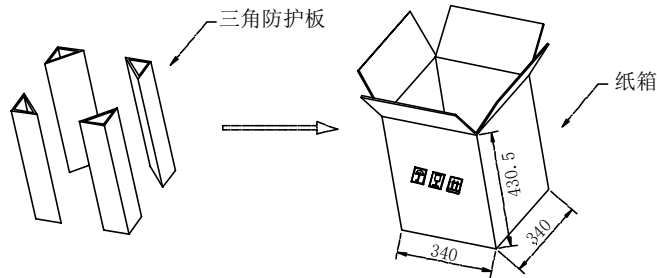
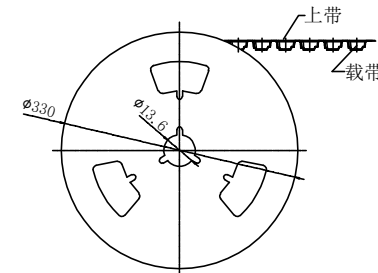
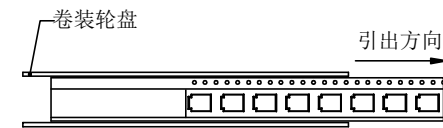
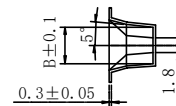
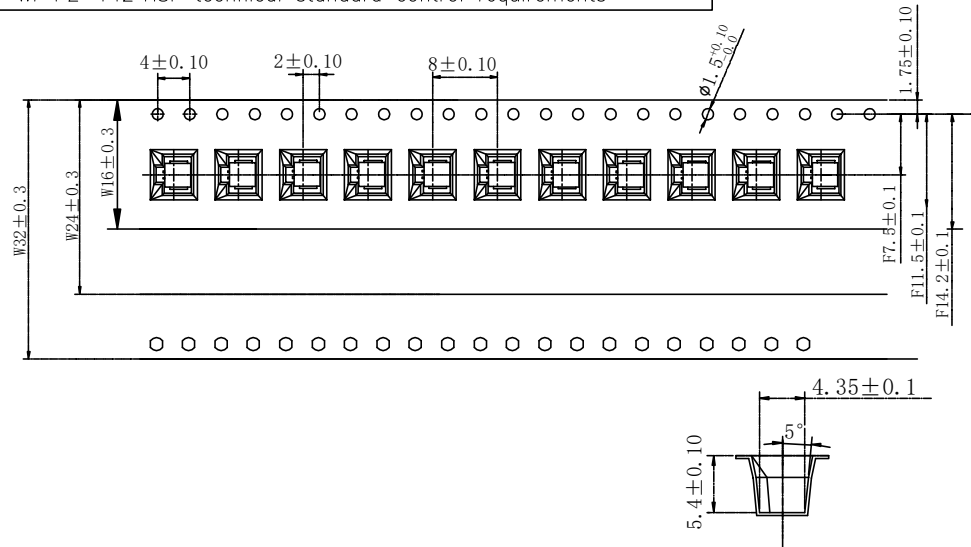
REV.	REVISION RECORD	DATE	UNIT:mm	GENERAL TOLERANCES		SCALE:	NAME	DATE	PART.NO:	DWG.NO:	WanLian Technology Co., Ltd
A0	NEW RELEASE	21.01.13		LINEAR	ANGLES	1:1					
A1	PART NUMBER RENEWAL	23.09.08	0.00±0.25	X'±3'	APPROVED	Wang_jr	23.09.08	A1002W0-1XX2XX0	ENDE05		
			0.00±0.10	X'X' ±2'	DESIGNER	Ding_bo	23.09.08				
			SIZE: A4		DRAWN	Ou_jian	23.09.08				

TITLE: Pitch 1.00mm 180°SH 单排立贴 Wafer

REV: A1 SHEET: 1/2

The product using material and processing must conform to the "WI-PZ-142"HSF technical standard control requirements

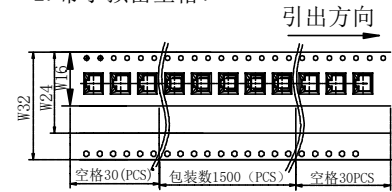
RoHS+HF



1. 上带剥离力:



2. 带子预留空格:



3. 载带材料规格: PS 白色料抗静电, 厚度 0.30mm

Circuits	载带尺寸			Circuits	载带尺寸			卷装包装明细表			
	W	BO	F		W	BO	F	PIN位	每卷包装数	每件盒数	每件数量
02P	16.0	4.50	7.50	12P	24.0	14.50	11.50	02P-08P	1500(PCS)	20 (盒)	3000
03P	16.0	5.50	7.50	13P	24.0	15.50	11.50	07P-13P	1500(PCS)	14 (盒)	2100
04P	16.0	6.50	7.50	14P	32.0	16.50	14.20	14P-16P	1500(PCS)	11 (盒)	16500
05P	16.0	7.50	7.50	15P	32.0	17.50	14.20				
06P	16.0	8.50	7.50	16P	32.0	18.50	14.20				
07P	24.0	9.50	11.50								
08P	24.0	10.50	11.50								
09P	24.0	11.50	11.50								
10P	24.0	12.50	11.50								
11P	24.0	13.50	11.50								

REV.	REVISION RECORD	DATE		GENERAL TOLERANCES		SCALE: 1:1	NAME	DATE	PART.NO: A1002W0-1XX2XX0	DWG.NO: ENDE05	 WanLian Technology Co., Ltd
A0	NEW RELEASE	21.01.13		LINEAR	ANGLES	APPROVED	Wang_jr	23.09.08			
A1	PART NUMBER RENEWAL	23.09.08	UNIT:mm	0.00±0.25	X'±3'	DESIGNER	Ding_bo	23.09.08	TITLE: Pitch 1.00mm 180°SH 单排立贴 Wafer	REV: A1	SHEET: 2/2
				SIZE: A4	0.000±0.10	X'X' ±2'	DRAWN	Ou_jian			