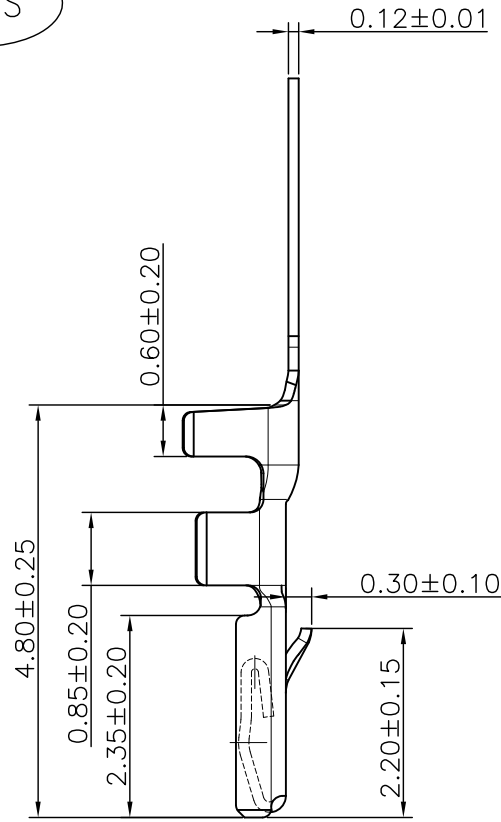
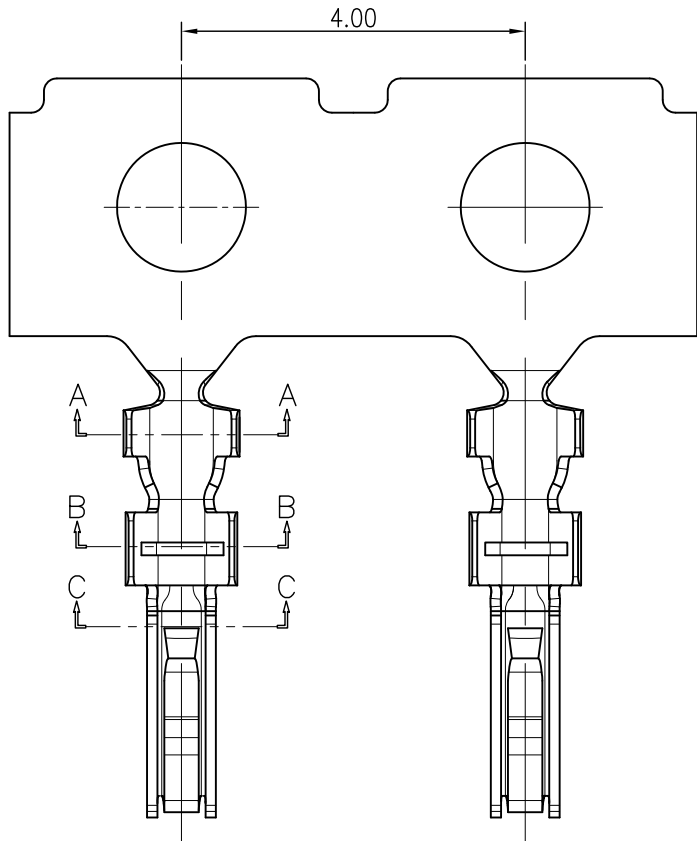


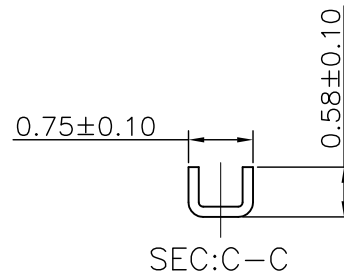
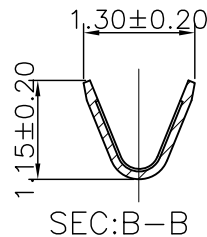
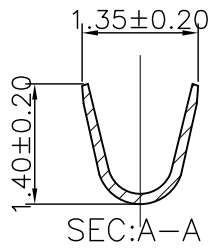
The product using material and processing must conform to the "WI-PZ-001"HSF technical standard control requirements

RoHS



NOTE:
 1.MATERIAL SPECIFICATION:
 1-1.CONTACTS: PHOSPHOR BRONZE
 2.PLATING SPECIFICATION:
 2-1.CONTACTS:
 TIN/GOLD FLASH PLATED OVER ALL.
 3.MECHANICAL PERFORMANCE:
 3-1.DURABILITY: 50 CYCLES.
 4.ELECTRICAL PERFORMANCE:
 4-1.CURRENT RATING: 1A
 RATED VOLTAGE : 20V AC/DC
 4-2.CONTACT RESISTANCE: 30 mΩ MAX
 4-3.INSULATION RESISTANCE: 100 MΩ Min
 4-4.DIELECTRIC WITHSTANDING : 500V
 5.ENVIRONMENTAL PERFORMANCE:
 5-1.OPERATING TEMPERATURE: -25°C~+85°C.
 6.PACKAGE SPEC:20K/REEL
 7.P/N: A1006 T F X-X

SERIES NO: _____ PLATING:
 A-ALL AU G/F
 C-BRIGHE TIN
 D-MATTE TIN
 CONNECTOR: _____ METAL:
 T-TERMINAL P-PHOSPHOR BRONZE
 B-BRASS
 MALE FEMALE: _____
 F-FEMALE
 M-MALE



REV.	REVISION RECORD	DATE		GENERAL TOLERANCES		SCALE: 1:1	NAME	DATE	PART.NO:	DWG.NO:	
A0	NEW RELEASE	21.01.13		LINEAR	ANGLES	APPROVED	Wang_jr	21.01.13	A1006TFX-X	ENDE05	
			UNIT:mm	0.00±0.25	X°±3°	DESIGNER	Han_Gao	21.01.13	TITLE:		REV: A0 SHEET: 1/1
			SIZE: A4	0.000±0.10	X°X' ±2°	DRAWN	Zijun_Huang	21.01.13	Pitch1.0mm SHL端子 AWG#28~#32		