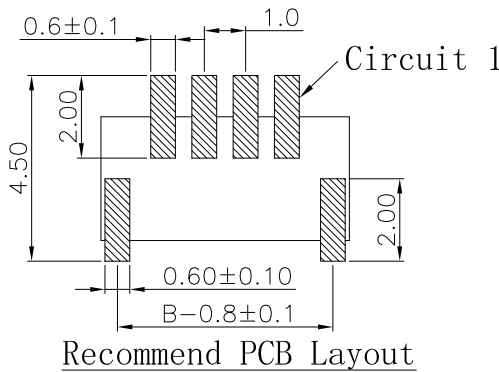
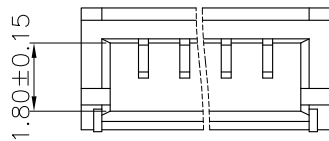
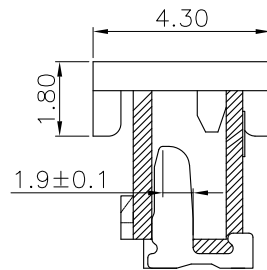
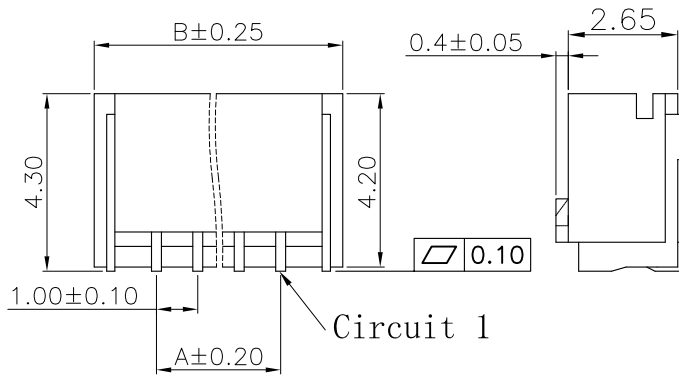


The product using material and processing must conform to the "WI-PZ-001"HSF technical standard control requirements

RoHS+HF



NOTE:  
 1.MATERIAL SPECIFICATION:  
 1-1.HOUSING: LCP NATURE UL94V-0  
 1-2.CONTACTS: BRASS  
 1-3.SHELL: BRASS  
 2.PLATING SPECIFICATION:  
 2-1.CONTACTS: TIN PLATED OVER ALL.  
 2-2.SHELL: TIN PLATED OVER ALL.  
 3.MECHANICAL PERFORMANCE:  
 3-1.maintain FORCE: 0.3kgf/PIN MIN  
 3-2.DURABILITY: 25 CYCLES.  
 4.ELECTRICAL PERFORMANCE:  
 4-1.RATED CURRENT: 1A AC,DC  
 RATED VOLTAGE: 125V AC/DC  
 4-2.INSULATION RESISTANCE: 100MΩ MIN  
 CONTACT RESISTANCE : 20mΩ MAX  
 4-3.WITHSTANDING VOLTAGE: 500V AC/minute  
 5.ENVIRONMENTAL PERFORMANCE:  
 OPERATING TEMPERATURE: -25°C~+85°C.  
 6.PACKAGE SPEC: REEL  
 7.P/N: A1009 W 0-1 XX 2 X X 0  
 SERIES NO: \_\_\_\_\_  
 CONNECTOR: \_\_\_\_\_  
 W-WAFER  
 ANGLE: \_\_\_\_\_  
 0-180°  
 ROW NO: \_\_\_\_\_  
 1-SINGLE ROW  
 PIN Q'PY: \_\_\_\_\_  
 02~16  
 COLOR:  
 A-BLACK  
 S-NATURE  
 PLATING:  
 A-ALL AU G/F  
 C-BRIGHT TIN  
 D-MATTE Tin  
 TERMIPOINT:  
 2-SMT

Circuit	Dimensions(mm)		Circuit	Dimensions(mm)	
	A	B		A	B
02	---	4.0	12	11.0	14.0
03	2.0	5.0	13	12.0	15.0
04	3.0	6.0	14	13.0	16.0
05	4.0	7.0	15	14.0	17.0
06	5.0	8.0	16	15.0	18.0
07	6.0	9.0	17	16.0	19.0
08	7.0	10.0	18	17.0	20.0
09	8.0	11.0	19	18.0	21.0
10	9.0	12.0	20	19.0	22.0
11	10.0	13.0			

REV.	REVISION RECORD	DATE	UNIT:mm	GENERAL TOLERANCES		SCALE: 1:1	NAME	DATE	PART.NO: A1009W0-1XX2XX0	DWG.NO: ENDE05	TITLE: PITCH1.0MM 180° SINGLE ROW WITH LOCK SMT TYPE WAFER	REV: A1	SHEET: 1/1
A0	NEW RELEASE	22.11.23		LINEAR	ANGLES	APPROVED							
				0.0±0.35	X'REF±6°		Wang_jr	22.11.23					
				0.00±0.25	X'±3°		Han_Gao	22.11.23					
				0.000±0.10	X'X' ±2°		Zijun_Huang	22.11.23					

