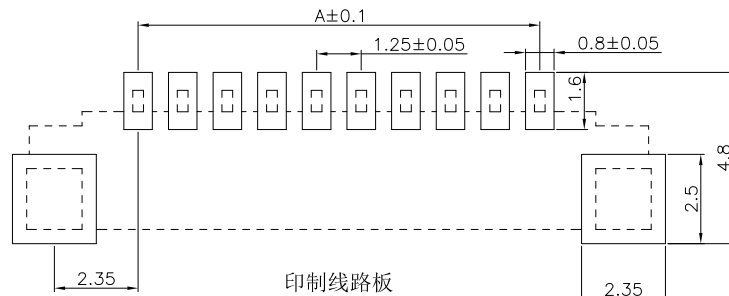
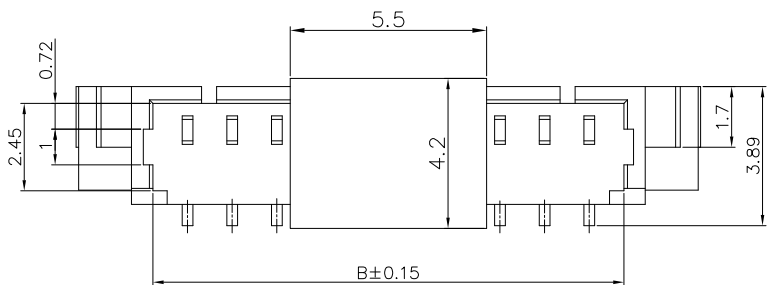


The product using material and processing must conform to the "WI-PZ-001"HSF technical standard control requirements

RoHS+HF



- NOTE:
- MATERIAL SPECIFICATION:
 - HOUSING: LCP,Ul94V-0
 - CONTACTS: BRASS
 - PLATING SPECIFICATION:
 - CONTACTS: TIN/GOLD FLASH PLATED OVER ALL.
 - MECHANICAL PERFORMANCE:
 - RETENTIVITY FORCE: 0.7kgf/PIN MIN
 - DURABILITY: 50 CYCLES.
 - ELECTRICAL PERFORMANCE:
 - CURRENT RATING: 1A
RATED VOLTAGE : 125V AC/DC
 - CONTACT RESISTANCE: 20 mΩ MAX
 - INSULATION RESISTANCE: 100MΩ Min
 - DIELECTRIC WITHSTANDING : 500V
 - ENVIRONMENTAL PERFORMANCE:
 - OPERATING TEMPERATURE: -25°C~+85°C.
 - PACKAGE SPEC: REEL
 - P/N ORDER:



A1251 W 0-1 XX 2 X X 0

SERIES NO: A1251 W 0-1 XX 2 X X 0

CONNECTOR: W-WAFER

ANGLE: 0-180°

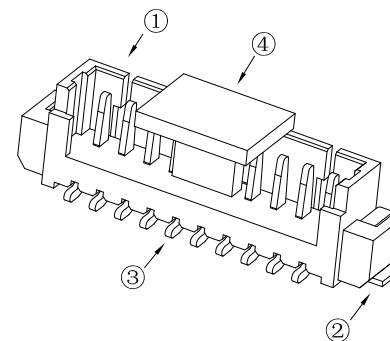
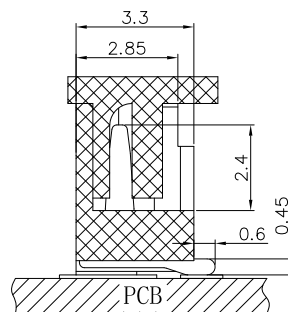
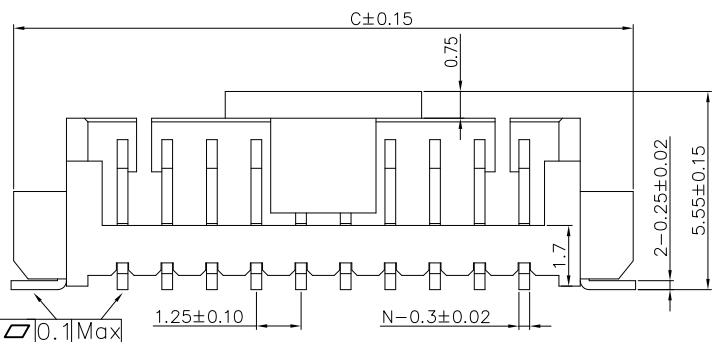
ROW NO: 1-SINGLE ROW

PIN Q'PY: 02~16

COLOR: A-BLACK M-BEIGE

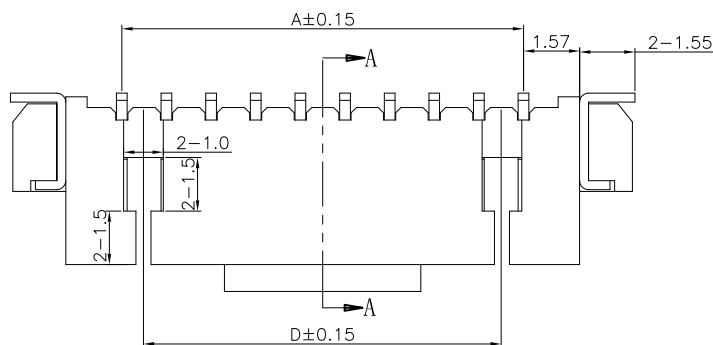
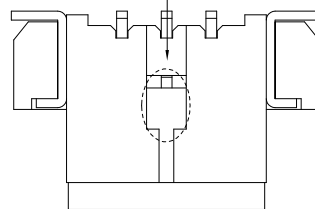
PLATING: A-ALL AU G/F C-BRIGHT TIN D-MATTE TIN

TERMIPOINT: 2-SMT



剖面 A-A

2-3PIN立贴开一个槽



NO	物料名称	数量 (PCS)	材质	镀涂
①	塑胶件	1 PCS	LCP	本色
②	焊片	2 PCS	黄铜	亮锡
③	PIN针	2-16 PCS	黄铜	亮锡

Ordering Information & Dimensions

Circuit	Dimensions(mm)				Circuit	Dimensions(mm)			
	A	B	C	D		A	B	C	D
02	---	3.10	7.30	/	10	11.25	13.10	17.30	10.00
03	2.50	4.35	8.55	/	11	12.50	14.35	18.55	11.25
04	3.75	5.60	9.80	2.50	12	13.75	15.60	19.80	12.50
05	5.00	6.85	11.05	3.75	13	15.00	16.85	21.05	13.75
06	6.25	8.10	12.30	5.00	14	16.25	18.10	22.30	15.00
07	7.50	9.35	13.55	6.25	15	17.50	19.35	23.55	16.25
08	8.75	10.60	14.80	7.50	16	18.75	20.60	24.80	17.50
09	10.00	11.85	16.05	8.75					

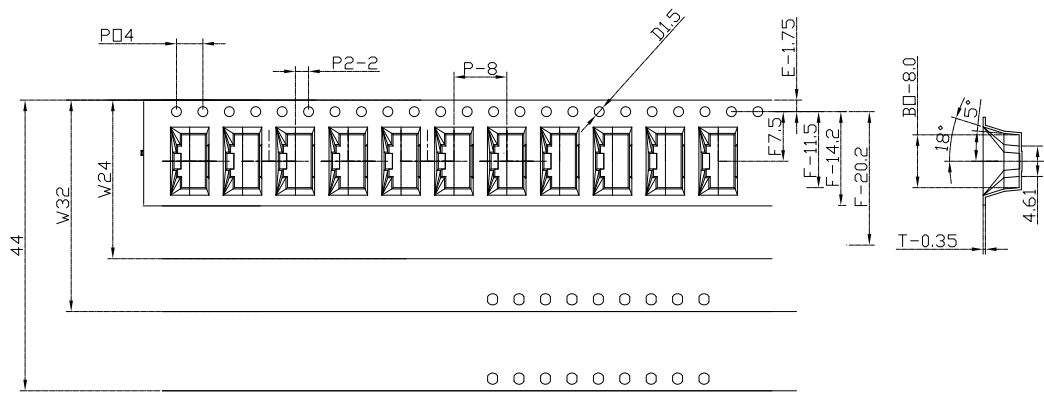
REV.	REVISION RECORD	DATE	GENERAL TOLERANCES		SCALE:	NAME	DATE	PART. NO:	DWG. NO:
A0	NEW RELEASE	21.03.16	LINEAR	ANGLES	1:1	Wang_jr	23.09.14	A1251W0-1XX2XX0	ENDE05
A1	更新尺寸表 "DIM C"	23.03.20	0.00±0.35	X° REF±6°	APPROVED	Ding_bo	23.09.14	TITLE: WAFER PITCH 1.25mm 立贴	WanLian Technology Co., Ltd
A2	PART NUMBER RENEWAL	23.09.14	0.00±0.25	X° ±3°	DESIGNER	LX_HOU	23.09.14		
			0.000±0.10	X° X'±2°	DRAWN				
			UNIT: mm					REV: A2	SHEET: 1/2
			SIZE: A4						



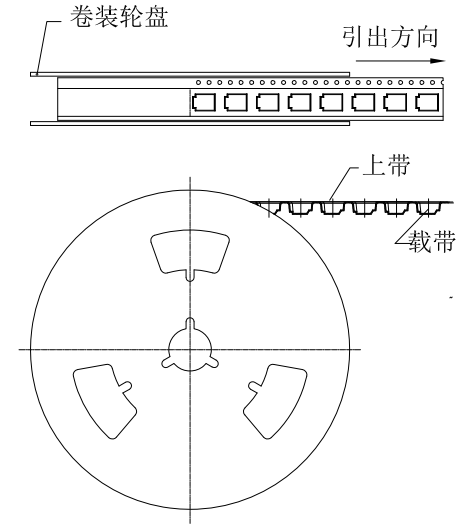
REV: A2 SHEET: 1/2

The product using material and processing must conform to the "WI-PZ-001" HSF technical standard control requirements

RoHS+HF

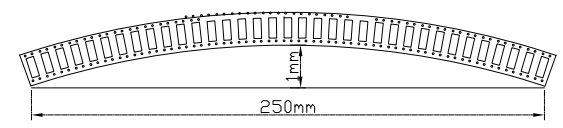
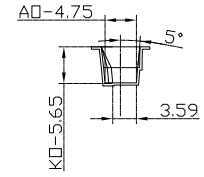


卷装示意图仅供参考



1.25-立贴系列

	W	B0	F
2P	16.00±0.30	8.00±0.10	7.50±0.10
3P	16.00±0.30	9.25±0.10	7.50±0.10
4P	24.00±0.30	10.50±0.10	11.5±0.10
5P	24.00±0.30	11.75±0.10	11.5±0.10
6P	24.00±0.30	13.0±0.10	11.5±0.10
7P	24.00±0.30	14.25±0.10	11.5±0.10
8P	24.00±0.30	15.50±0.10	11.5±0.10
9P	32.00±0.30	16.75±0.10	14.2±0.10
10P	32.00±0.30	18.00±0.10	14.2±0.10
11P	32.00±0.30	19.25±0.10	14.2±0.10
12P	32.00±0.30	20.50±0.10	14.2±0.10
13P	32.00±0.30	21.75±0.10	14.2±0.10
14P	44.00±0.30	23.0±0.10	20.2±0.10
15P	44.00±0.30	24.25±0.10	20.2±0.10
16P	44.00±0.30	25.50±0.10	20.2±0.10



尺寸栏	
E	1.75±0.10
F	7.5±0.10
P2	2.00±0.10
∅D	1.50 ^{+0.10} _{-0.00}
Po	4.00±0.10
W	16.00±0.30
P	8.00±0.10
Ao	4.75±0.10
B0	8.00±0.10
K0	5.65±0.10
t	0.35±0.05

生产参数	
模数	130 模
颗数	1560 颗
卷轮	330mm
包装数	1500 颗

说明
 1. 10个边孔的累计公差不能超过±0.2mm.
 2. 材料规格: PS 白色料抗静电, 厚度 0.35mm.
 3. 13英寸卷轮卷装长度: 12.48米, 包装零件总颗数: 1560颗, 前后各空30PCS, 每盘实包颗数: 1500颗
 4. 所有尺寸设计参照EIA-481-D.
 5. 载带在250mm长度内最大弯曲不能超过1mm见上图

产品型号	盘装只数	整箱盘数
1.25-02P立	1500	20R/箱
1.25-03P立	1500	20R/箱
1.25-04P立	1500	14R/箱
1.25-05P立	1500	14R/箱
1.25-06P立	1500	14R/箱
1.25-07P立	1500	14R/箱
1.25-08P立	1500	14R/箱
1.25-09P立	1500	11R/箱
1.25-10P立	1500	11R/箱
1.25-11P立	1500	11R/箱
1.25-12P立	1500	11R/箱
1.25-13P立	1500	11R/箱
1.25-14P立	1500	8R/箱
1.25-15P立	1500	8R/箱
1.25-16P立	1500	8R/箱

REV.	REVISION RECORD	DATE	GENERAL TOLERANCES	SCALE: 1:1	NAME	DATE	PART. NO:	DWG. NO:
A0	NEW RELEASE	21.03.16	LINEAR	APPROVED	Wang_jr	23.09.14	A1251W0-1XX2XX0	ENDE05
A1	更新尺寸表 "DIM C"	23.03.20	0.0±0.35	DESIGNER	Ding_bo	23.09.14	TITLE: WAFER PITCH 1.25mm 立贴 包装规范	
A2	PART NUMBER RENEWAL	23.09.14	0.00±0.25	DRAWN	LX_HOU	23.09.14		
			0.000±0.10					

万连科技
 WanLian Technology Co., Ltd
 REV: A2 SHEET: 2/2