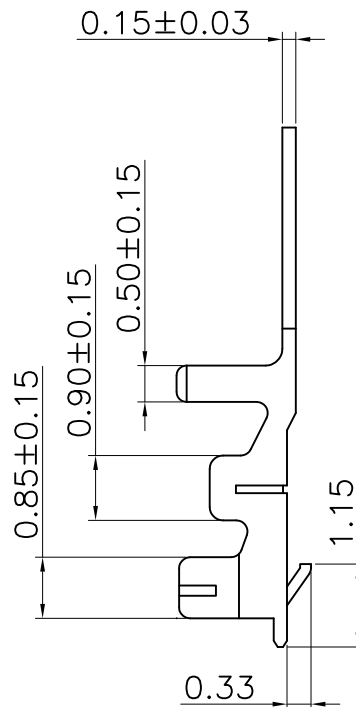
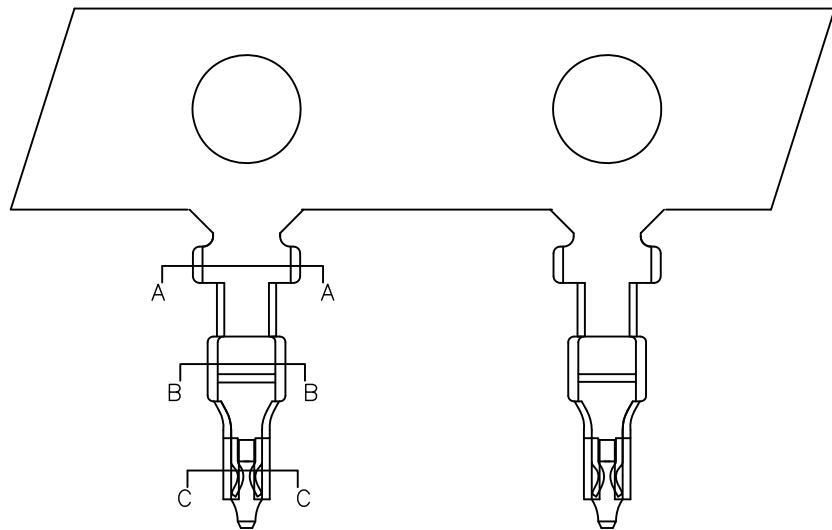
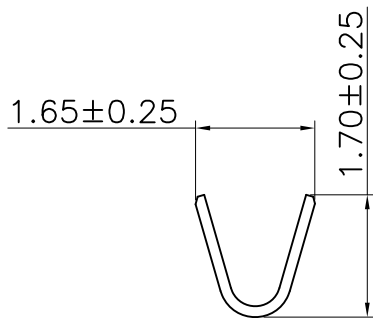


The product using material and processing must conform to the "WI-PZ-001"HSF technical standard control requirements

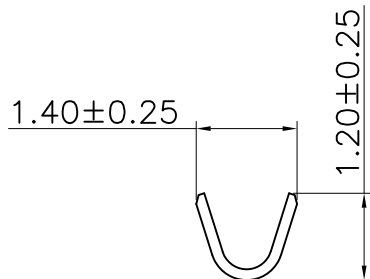


- NOTE:
- MATERIAL SPECIFICATION:
 - 1-1.TERMINAL: Phosphor Bronze
 - PLATING SPECIFICATION:
 - 2-1.TREMINAL: AU/TIN-PLATED ON CONTACT AREA.
 - MECHANICAL PERFORMANCE:
 - 3-1.INSERTION FORCE: 0.3kgf/pin MAX
 - 3-2.DURABILITY: 50 CYCLES.
 - ELECTRICAL PERFORMANCE:
 - 4-1. RATED CURRENT : 1A AC/DC
RATED VOLTAGE : 150V AC/DC
 - 4-2.INSULATION RESISTANCE: 500MΩ MIN
 - 4-3.CONTACT RESISTANCE : 30mΩ MAX
 - 4-4.WITHSTANDING VOLTAGE: 500V AC/MINUTE
 - ENVIRONMENTAL PERFORMANCE:
 - OPERATING TEMPERATURE: -25°C~+85°C.
 - P/N:

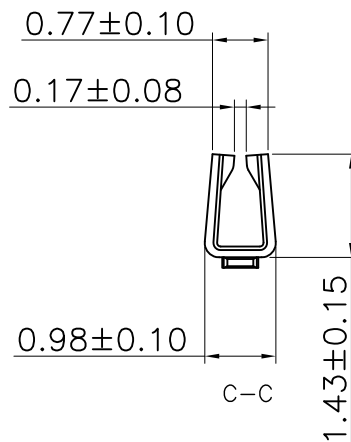
SERIES NO: A1252 T F X-X
 CONNECTOR: T-TERMINAL
 MALE FEMALE: F-FEMALE M-MALE
 PLATING: 1-G/F
 A-ALL AU G/F
 C-BRIGHE TIN
 D-MATTE TIN
 METAL: P-PHOSPHOR BRONZE B-BRASS



A-A



B-B



C-C

REV.	REVISION RECORD	DATE	UNIT:mm	GENERAL TOLERANCES		SCALE:	NAME	DATE	PART.NO:	DWG.NO:	
A0	NEW RELEASE	21.01.13		LINEAR	ANGLES	1:1	Wang_jr	21.01.13	A1252TFX-X	ENDE05	
			0.00±0.25	X°±3°		Han_Gao	21.01.13	TITLE: Pitch 1.25mm FEMALE TEMINAL		REV: A0	SHEET: 1/1
			0.00±0.10	X°X' ±2°		Longcan_Liu	21.01.13	AWG#26-#32			