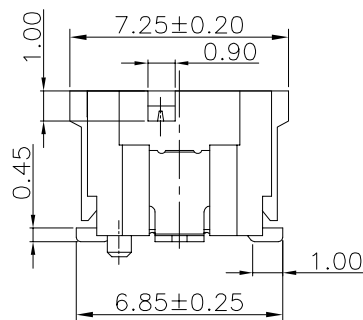
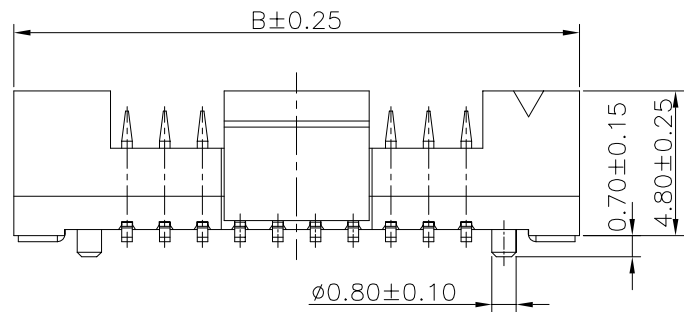
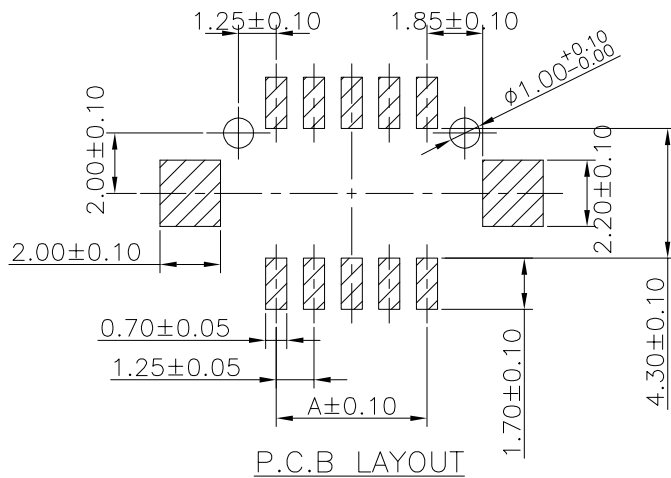
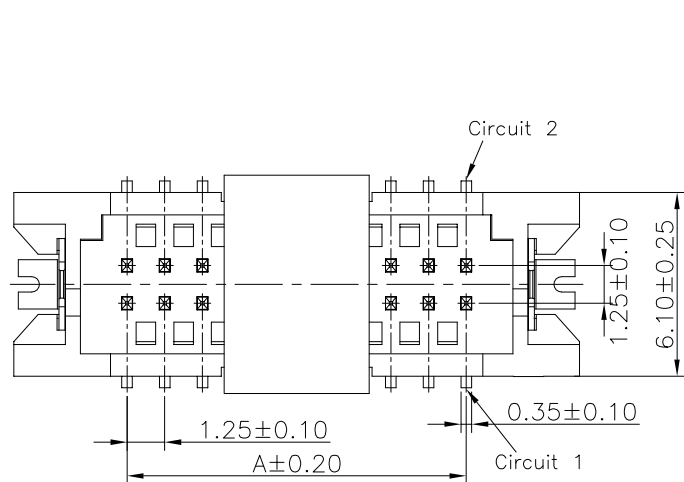


The product using material and processing must conform to the "WI-PZ-001"HSF technical standard control requirements

RoHS



NOTE:
 1.MATERIAL SPECIFICATION:
 1-1.HOUSING: PA6T,UL94V-0
 1-2.CONTACTS: BRASS
 1-3.CAP: PA6T,UL94V-0
 1-4.SOLDER TABS: BRASS
 2.PLATING SPECIFICATION:
 2-1.CONTACTS:
 TIN/AU PLATED OVER ALL.
 3.ELECTRICAL PERFORMANCE:
 3-1. RATED CURRENT : 1A AC/DC
 RATED VOLTAGE : 150V AC/DC
 3-2.INSULATION RESISTANCE: 500MΩ MIN
 CONTACT RESISTANCE : 30mΩ(MAX.)
 3-3.WITHSTANDING VOLTAGE: 500V AC/minute
 4.ENVIRONMENTAL PERFORMANCE:
 OPERATING TEMPERATURE: -25°C~+85°C.
 5.PACKAGE SPEC: REEL
 6.P/N:
 A1252 W 0-2 XX 2 X X 0
 SERIES NO:
 CONNECTOR:
 W-WAFER
 ANGLE:
 0-180°
 ROW NO:
 2-DOUBLE ROW
 PIN Q'PY:
 10~40
 COLOR:
 A-BLACK
 S-NATURE
 PLATING:
 A-ALL AU G/F
 C-BRIGHT TIN
 D-MATTE TIN
 TERMIPOINT:
 2-SMT

Ordering Information & Dimensions

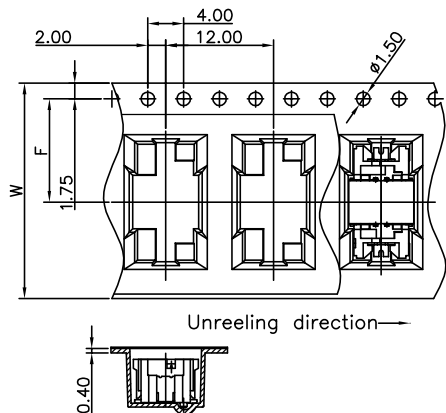
Circuit	Dimensions	
	A	B
2X05P	5.00	12.50
2X06P	6.25	13.75
2X07P	7.50	15.00
2X10P	11.25	18.75
2X15P	17.50	25.00
2X20P	23.75	31.25

REV.	REVISION RECORD	DATE	UNIT:mm	GENERAL TOLERANCES		SCALE:	NAME	DATE	PART.NO:	DWG.NO:	 WanLian Technology Co., Ltd
A0	NEW RELEASE	21.01.13		LINEAR	ANGLES	1:1	Wang_jr	23.10.10	A1252W0-2XX2XX0	ENDE05	
A1	PART NUMBER RENEWAL	23.10.10	0.00±0.25	X°±3'	APPROVED	Han_Gao	23.10.10	TITLE:		REV: A1	SHEET: 1/2
			SIZE: A4	0.000±0.10	X°X' ±2'	DRAWN	Zijun_Huang	PITCH 1.25mm 180° SMT DUAL ROW WAFER			

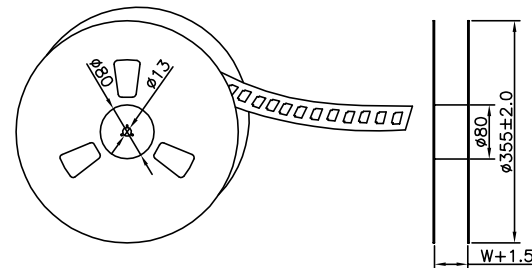
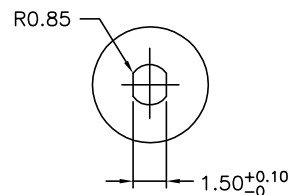
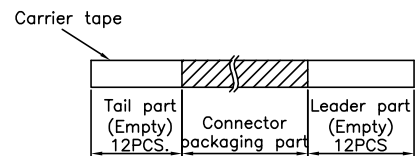
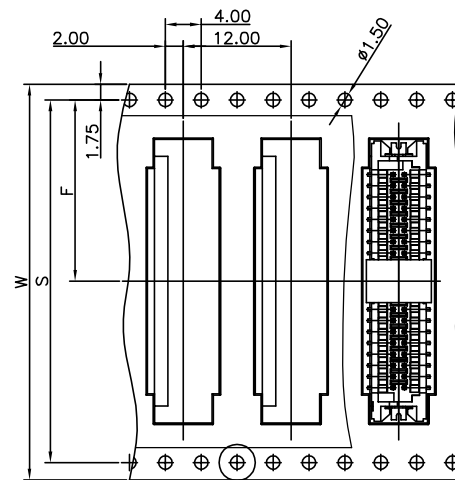
The product using material and processing must conform to the "WI-PZ-001"HSF technical standard control requirements

RoHS

2X05~2X07 Contacts



2X10~2X20 Contacts



Number of Contacts	W±0.3	F±0.1	S±0.1	Q'ty/Reel
2X05P	24	11.50	/	1,000
2X06P	24	11.50		1,000
2X07P	24	11.50		1,000
2X10P	32	14.20	28.40	1,000
2X15P	44	20.20	40.40	1,000
2X20P	44	20.20	40.40	1,000

REV.	REVISION RECORD	DATE		GENERAL TOLERANCES		SCALE: 1:1	NAME	DATE	PART.NO:	DWG.NO:	
A0	NEW RELEASE	21.01.13		LINEAR	ANGLES	APPROVED	Wang_jr	23.10.10	A1252W0-2XX2XX0	ENDE05	
A1	PART NUMBER RENEWAL	23.10.10	UNIT:mm	X'±3'	DESIGNER	Han_Gao	23.10.10	TITLE:		REV: A1 SHEET: 2/2	
			SIZE: A4	0.00±0.10	X'X' ±2'	DRAWN	Zijun_Huang	23.10.10	PITCH 1.25mm 180° SMT DUAL ROW WAFER		

WanLian Technology Co., Ltd