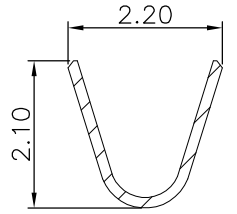
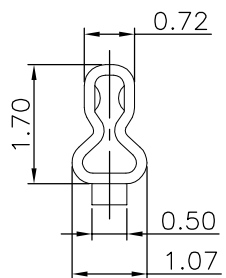
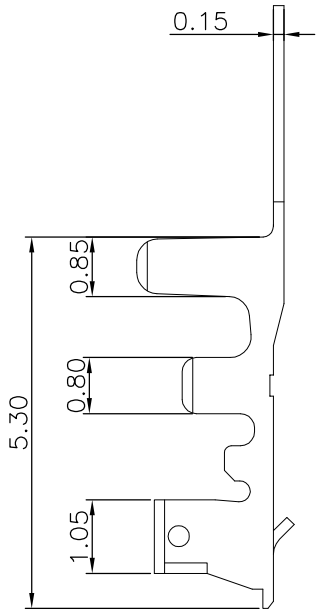
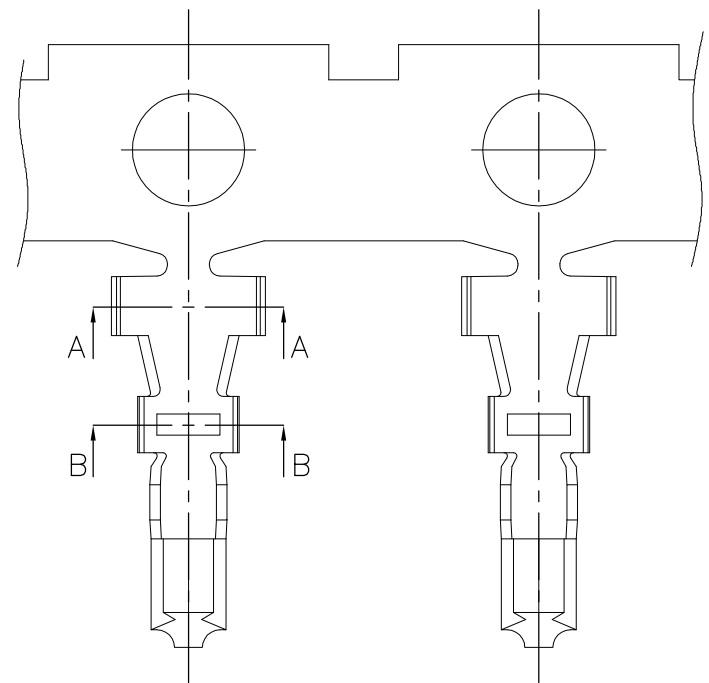


The product using material and processing must conform to the "WI-PZ-142"HSF technical standard control requirements



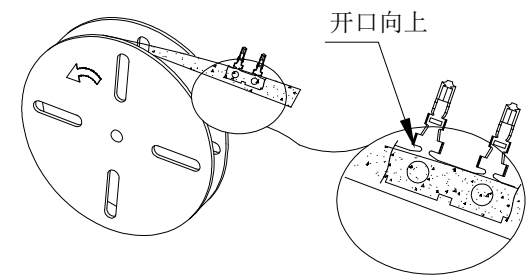
NOTE:
 1.MATERIAL SPECIFICATION:
 1-1.TERMINAL:COPPER ALLOY BRASS
 2.PLATING SPECIFICATION:
 2-1.TERMINAL:
 TIN/AU PLATED OVER ALL.
 3.ELECTRICAL PERFORMANCE:
 3-1. RATED CURRENT : 3A AC,DC
 3-2.INSULATION RESISTANCE: 1000MΩ MIN
 3-3.CONTACT RESISTANCE : 20mΩ(MAX.)
 3-4.WITHSTANDING VOLTAGE: 500V AC/minute
 4.ENVIRONMENTAL PERFORMANCE:
 OPERATING TEMPERATURE: -25°C~+85°C.

SERIES NO: A1502 T F X-X
 CONNECTOR: T F X-X
 T-TERMINAL
 MALE FEMALE:
 PLATING:
 1-G/F
 A-ALL AU G/F
 C-BRIGHT TIN
 D-MATTE TIN
 METAL:
 P-PHOSPHOR BRONZE
 B-BRASS



SECTION:A-A

SECTION:B-B



Ordering Information & Specifications

Wire Range	Insulation O.D.	Qty/reel
AWG#24-#28	1.10mm(max)	10,000pcs

REV.	REVISION RECORD	DATE	UNIT:mm	GENERAL TOLERANCES		SCALE: 1:1	NAME	DATE	PART.NO:	DWG.NO:	
A0	NEW RELEASE	21.01.13		LINEAR	ANGLES	APPROVED	Wang_jr	21.01.13	A1502TFX-X	ENDE05	
			0.00±0.25	X'±3'	DESIGNER	Ding_bo	21.01.13	TITLE: 1.50mm PITCH CRIMP TERMINAL		REV: A0	SHEET: 1/1
			0.000±0.10	X'X' ±2'	DRAWN	Ou_jian	21.01.13				