

The product using material and processing must conform to the "WI-PZ-001" HSF technical standard control requirements



- NOTE:
- MATERIAL SPECIFICATION:
 - HOUSING: PB=PBT UL94V-0
 - TERMINAL: BRASS
 - PLATING SPECIFICATION:
 - TERMINAL: AC=BRIGHT TIN.
 - MECHANICAL PERFORMANCE:
 - INSERTION FORCE: 1.8kgf/PIN MAX
 - REMOVAL FORCE: 0.6kgf/PIN MIN
 - DURABILITY: 30 CYCLES.
 - ELECTRICAL PERFORMANCE:
 - RATED CURRENT : 3A
RATED VOLTAGE : 250V AC/DC
 - INSULATION RESISTANCE: 1000MΩ MIN
CONTACT RESISTANCE : 20mΩ MAX
 - WITHSTANDING VOLTAGE: AC 800V/1minute
 - ENVIRONMENTAL PERFORMANCE:
 - OPERATING TEMPERATURE: -25°C~+85°C.
 - PACKAGE SPEC: PE BAG

7.P/N: A2002 W 9-1 XX 1 X X 0

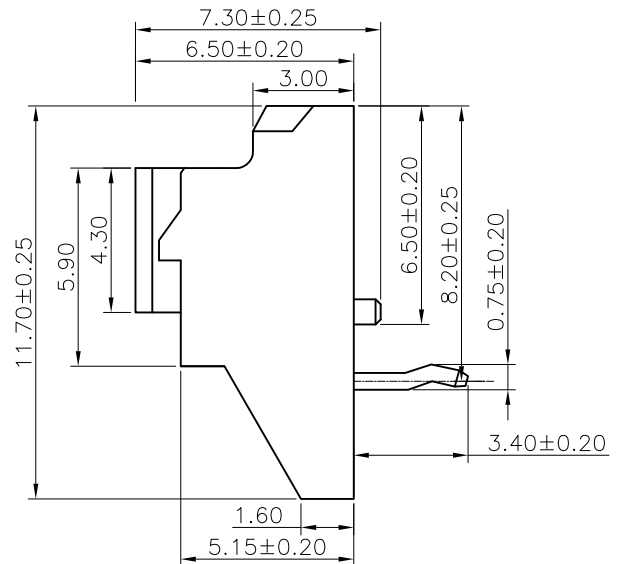
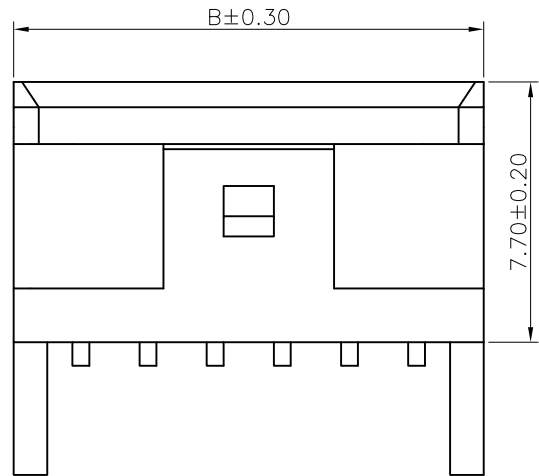
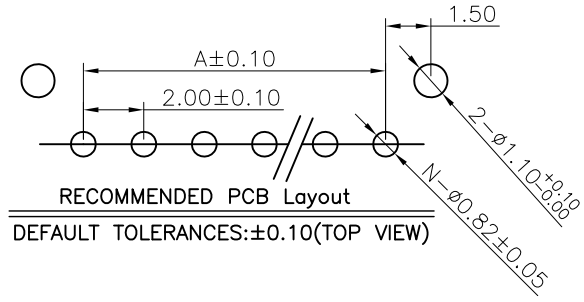
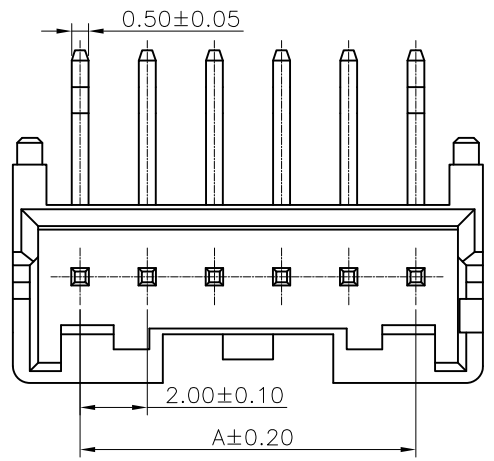
△ SERIES NO: _____ COLOR: A-BLACK K-WHITE

CONNECTOR: W-WAFER PLATING: A-ALL AU G/F C-BRIGHT TIN D-MATTE Tin

ANGLE: 9-90°

ROW NO: 1-SINGLE ROW

PIN Q'PY: 02~12 TERMIPOINT: 1-DIP



Circuit	Dimensions(mm)		Circuit	Dimensions(mm)	
	A	B		A	B
02	---	6.00	08	14.00	18.00
03	4.00	8.00	09	16.00	20.00
04	6.00	10.00	10	18.00	22.00
05	8.00	12.00	11	20.00	24.00
06	10.00	14.00	12	22.00	26.00
07	12.00	16.00			

REV.	REVISION RECORD	DATE	UNIT:mm	GENERAL TOLERANCES		SCALE:	NAME	DATE	PART.NO: A2002W9-1XX1XX0	DWG.NO: ENDE05	TITLE: PITCH 2.00mm 90° PA SINGLE ROW DIP WAFER	REV: A1	SHEET: 1/1
A0	NEW RELEASE	21.01.13		LINEAR	ANGLES	1:1	APPROVED	Wang_jr					
A1	PART NUMBER RENEWAL	23.9.16	0.00±0.25	X°±3°	DESIGNER	Han_Gao	23.9.16						
			0.00±0.10	X°X'±2°	DRAWN	Zijun_Huang	23.9.16						

