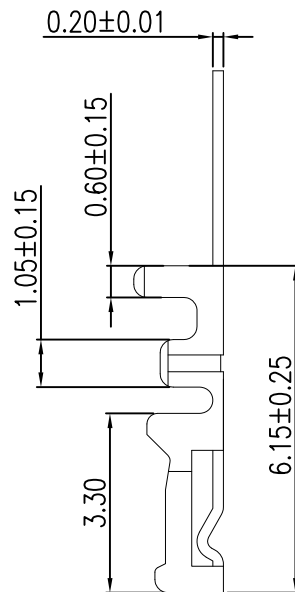
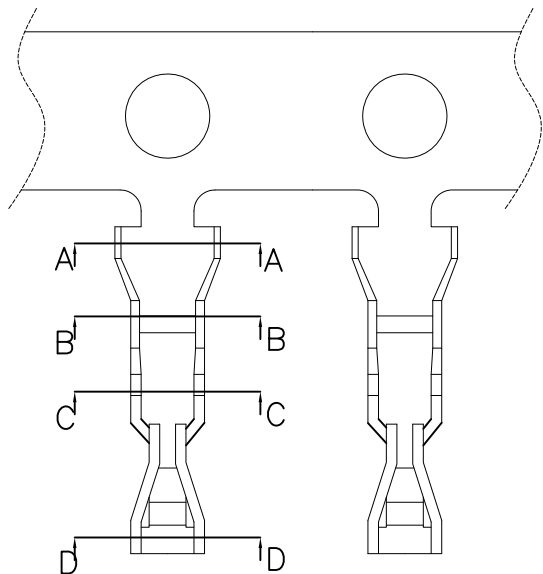


The product using material and processing must conform to the "WL-PZ-001"HSF technical standard control requirements

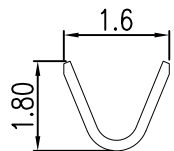
RoHS



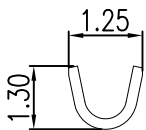
NOTE:

- 1.MATERIAL SPECIFICATION:
 - 1-1.CONTACTS: PHOSPHOR BRONZE
- 2.PLATING SPECIFICATION:
 - 2-1.CONTACTS: TIN/GOLD FLASH PLATED OVER ALL.
- 3.MECHANICAL PERFORMANCE:
 - 3-1.RETENTIVITY FORCE: 1.0KGF/pin min
 - 3-2.DURABILITY: 50 CYCLES.
- 4.ELECTRICAL PERFORMANCE:
 - 4-1.CURRENT RATING: 3A AC/DC
 - RATED VOLTAGE : 250V AC/DC
 - 4-2.CONTACT RESISTANCE: 10 mΩ MAX
 - 4-3.INSULATION RESISTANCE: 500MΩ Min
 - 4-4.DIELECTRIC WITHSTANDING : 800V
- 5.ENVIRONMENTAL PERFORMANCE:
 - 5-1.OPERATING TEMPERATURE: -25°C~+85°C.
- 6.PACKAGE SPEC: REEL
- 7.P/N:

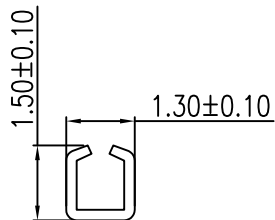
SERIES NO: A2005 T F X-X
 CONNECTOR: T-TERMINAL
 MALE FEMALE: F-FEMALE M-MALE
 PLATING: 1-G/F A-ALL AU G/F C-BRIGHE TIN D-MATTE TIN
 METAL: P-PHOSPHOR BRONZE B-BRASS



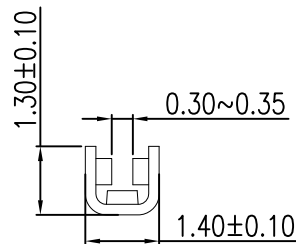
SEC:A-A



SEC:B-B



SEC:C-C



SEC:D-D

REV.	REVISION RECORD	DATE		GENERAL TOLERANCES		SCALE:	NAME	DATE	PART.NO:	DWG.NO:	
AO	NEW RELEASE	21.11.17		LINEAR	ANGLES	1:1	APPROVED	Wang_jr	21.11.17	A2005TFX-X	
			UNIT: mm	0.00±0.25	X°±3°	DESIGNER	Han_Gao	21.11.17	TITLE:		Pitch2.00mm 180°Female Terminal AWG #22 -#28 紧端 REV: A0 SHEET: 1/1
			SIZE: A4	0.000±0.10	X°X' ±2°	DRAWN	Zijun_Huang	21.11.17			