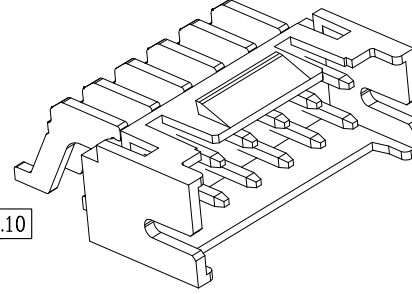
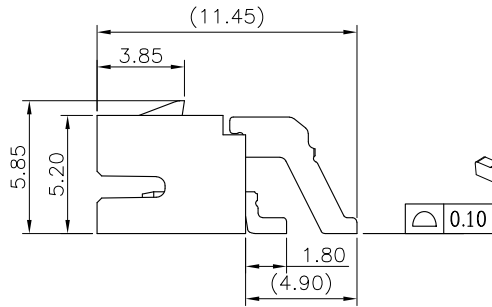
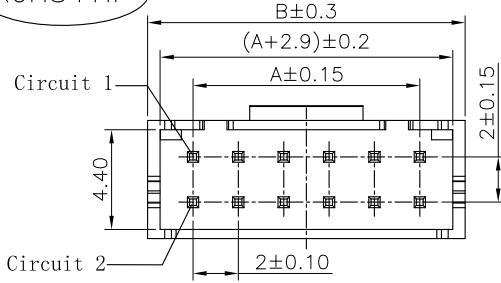


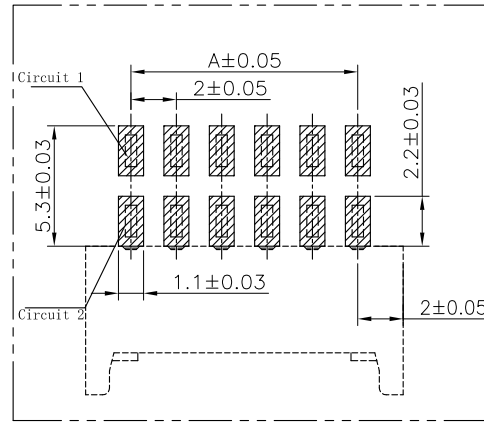
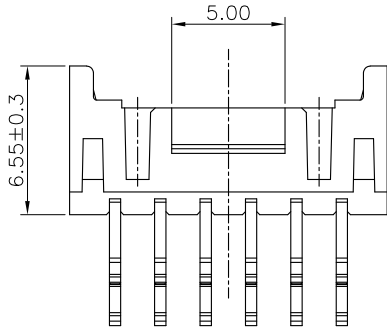
The product using material and processing must conform to the "WI-PZ-001" HSF technical standard control requirements

RoHS+HF

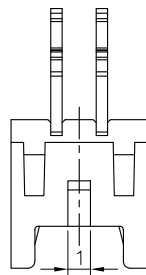


- NOTE:
- MATERIAL SPECIFICATION:
    - HOUSING: LCP,UL94V-0
    - CONTACTS: BRASS
  - PLATING SPECIFICATION:
    - CONTACTS: TIN/GOLD FLASH PLATED OVER ALL.
  - MECHANICAL PERFORMANCE:
    - RETENTIVITY FORCE: 1.5KGF/Pin Min
    - DURABILITY: 50 CYCLES.
  - ELECTRICAL PERFORMANCE:
    - CURRENT RATING: 3A AC/DC  
RATED VOLTAGE : 250V AC/DC
    - CONTACT RESISTANCE: 10 mΩ MAX
    - INSULATION RESISTANCE: 1000MΩ Min
    - DIELECTRIC WITHSTANDING : 800V
  - ENVIRONMENTAL PERFORMANCE:
    - OPERATING TEMPERATURE: -25°C~+85°C.
  - PACKAGE SPEC: REEL
  - P/N:

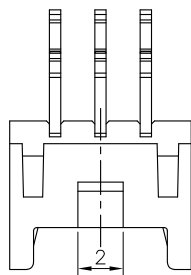
SERIES NO: A2006 W 9-2 XX 2 X X 0  
 CONNECTOR: W-WAFER  
 ANGLE: 9-90°  
 0-180°  
 ROW NO: 2-DOUBLE ROW  
 PIN Q'PY: 04~40  
 COLOR: A-BLACK, S-NATURE  
 PLATING: A-ALL AU G/F, C-BRIGHT TIN, D-MATTE TIN  
 TERMIPOINT: 2-SMT



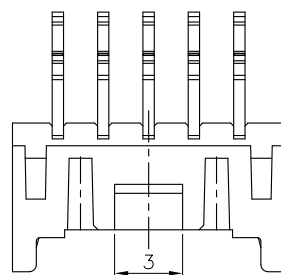
Circuit	Dimensions(mm)		Circuit	Dimensions(mm)	
	A	B		A	B
2*02	---	6.00	2*12	22.00	26.00
2*03	4.00	8.00	2*13	24.00	28.00
2*04	6.00	10.00	2*14	26.00	30.00
2*05	8.00	12.00	2*15	28.00	32.00
2*06	10.00	14.00	2*16	30.00	34.00
2*07	12.00	16.00	2*17	32.00	36.00
2*08	14.00	18.00	2*18	34.00	38.00
2*09	16.00	20.00	2*19	36.00	40.00
2*10	18.00	22.00	2*20	38.00	42.00
2*11	20.00	24.00			



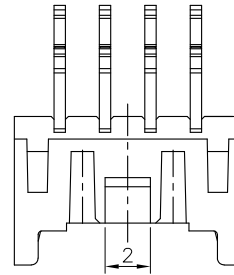
2P结构



3P结构



5P结构



4P结构

REV.	REVISION RECORD	DATE
A0	NEW RELEASE	22.10.28



GENERAL TOLERANCES	
LINEAR	ANGLES
0.0±0.35	X°REF±6°
0.00±0.25	X°±3°
0.000±0.10	X°X'±2°

SCALE:	NAME	DATE
1:1	Wang_jr	22.10.28
APPROVED	Han_Gao	22.10.28
DESIGNER	LanXuan_Hou	22.10.28
DRAWN		

PART.NO:	TITLE:
A2006W9-2XX2XX0	Pitch 2.0mm 90°PHD双排卧贴带扣 Wafer

DWG.NO: ENDE05



WanLian Technology Co., Ltd

REV: A0 SHEET: 1/1