

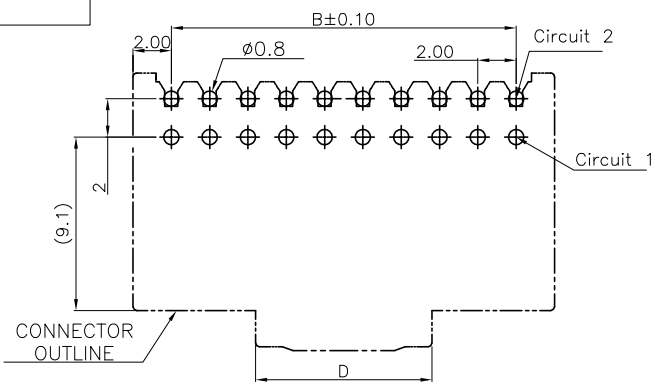
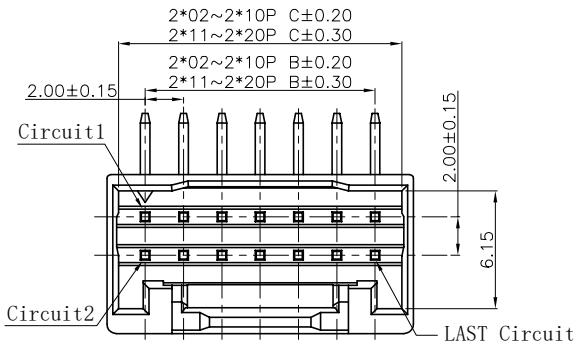
The product using material and processing must conform to the "WI-PZ-001"HSF technical standard control requirements



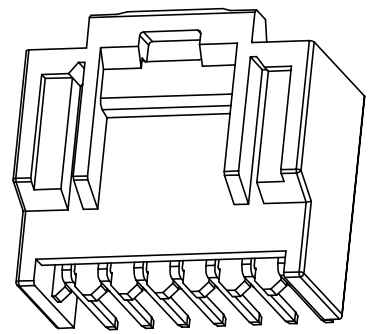
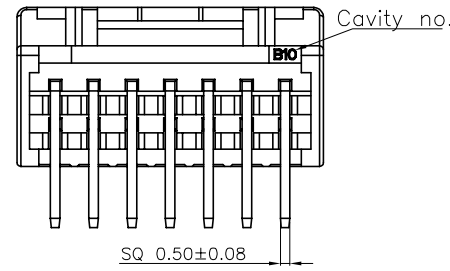
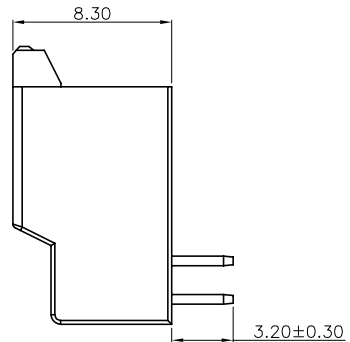
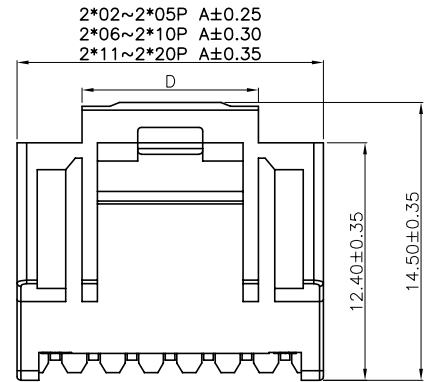
NOTE:
 1.MATERIAL SPECIFICATION:
 1-1.HOUSING: LCP,UL94V-0 ΔA_2
 1-2.CONTACTS: BRASS
 2.PLATING SPECIFICATION:
 2-1.CONTACTS:
 TIN/GOLD FLASH PLATED OVER ALL.
 3.ELECTRICAL PERFORMANCE:
 3-1.CURRENT RATING: 2A
 3-2.CONTACT RESISTANCE: 20 m Ω MAX
 3-3.INSULATION RESISTANCE: 1000M Ω Min
 3-4.DIELECTRIC WITHSTANDING : 1000V
 4.ENVIRONMENTAL PERFORMANCE:
 4-1.OPERATING TEMPERATURE: -40°C~+105°C.
 5.PACKAGE SPEC: PE BAG
 6.P/N:

ΔA_1 A2036 W 9-2 XX 1 X X 0
 SERIES NO:
 CONNECTOR:
 W-WAFER
 ANGLE:
 9-90°
 ROW NO:
 2-DOUBLE ROW
 PIN Q'PY:
 04~40
 COLOR:
 A-BLACK
 S-NATURE
 PLATING:
 A-ALL AU G/F
 C-BRIGHT TIN
 D-MATTE TIN
 TERMIPOINT:
 1-DIP

Circuit	Dimensions(mm)				Circuit	Dimensions(mm)			
	A	B	C	D		A	B	C	D
2*02	6.0	2.0	4.8	3.2	2*12	26.0	22.0	24.8	9.2
2*03	8.0	4.0	6.8	3.8	2*13	28.0	24.0	26.8	
2*04	10.0	6.0	8.8	5.2	2*14	30.0	26.0	28.8	
2*05	12.0	8.0	10.8	7.3	2*15	32.0	28.0	30.8	
2*06	14.0	10.0	12.8	9.2	2*16	34.0	30.0	32.8	
2*07	16.0	12.0	14.8		2*17	36.0	32.0	34.8	
2*08	18.0	14.0	16.8		2*18	38.0	34.0	36.8	
2*09	20.0	16.0	18.8		2*19	40.0	36.0	38.8	
2*10	22.0	18.0	20.8		2*20	42.0	38.0	40.8	
2*11	24.0	20.0	22.8						



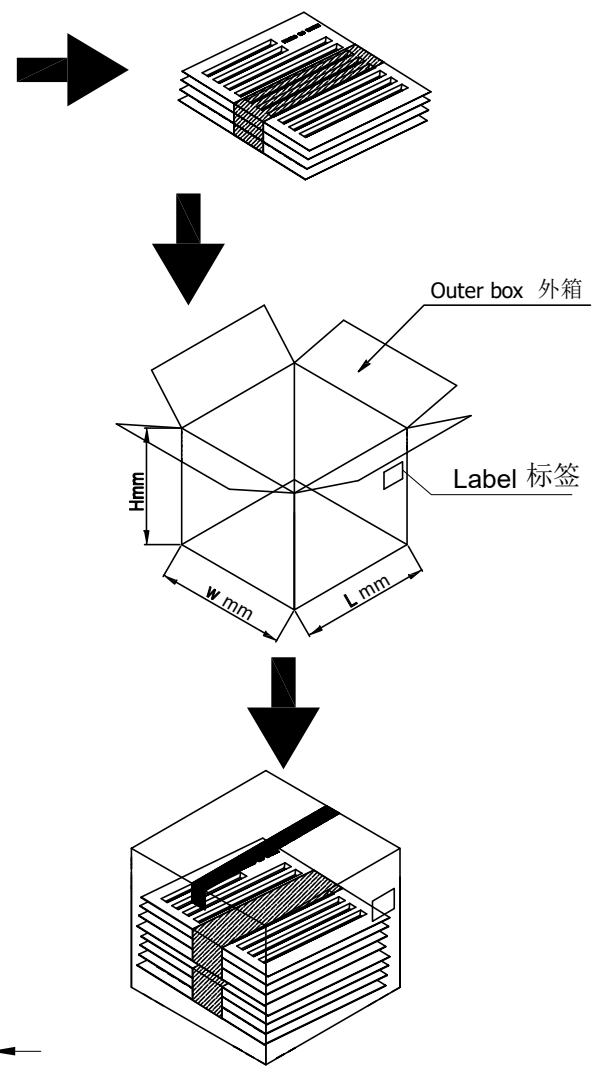
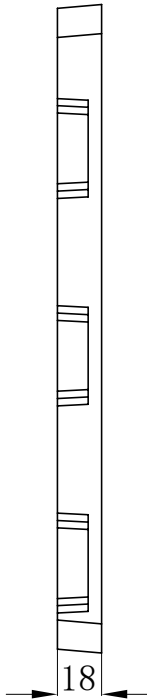
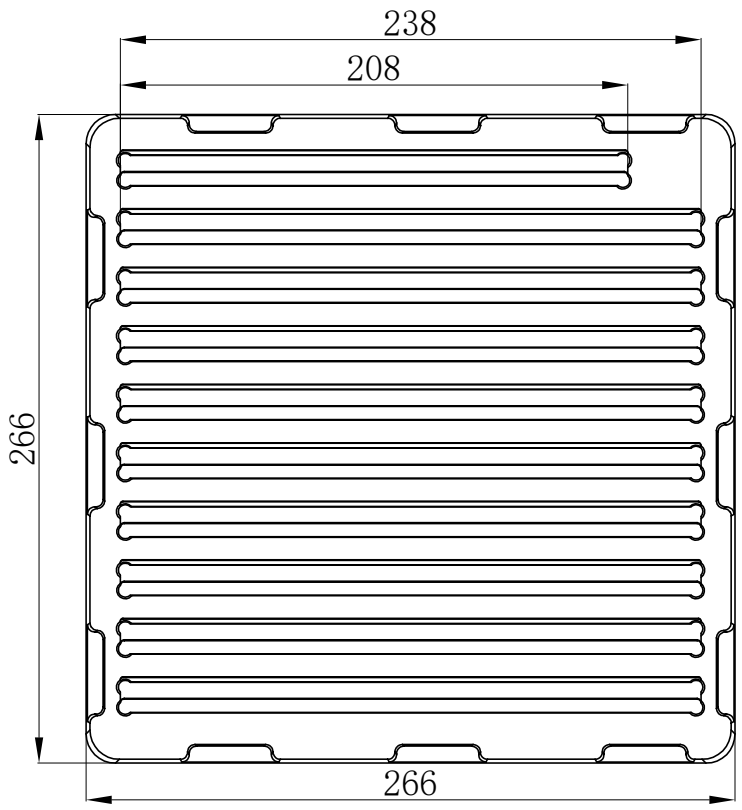
RECOMMENDED PCB LAYOUT
 (GENERAL TOLERANCE:±0.05)



REV.	REVISION RECORD	DATE	GENERAL TOLERANCES		SCALE:	NAME	DATE	PART.NO:	DWG.NO:	 WanLian Technology Co., Ltd REV: A2 SHEET: 1/2
A0	NEW RELEASE	21.10.12	LINEAR 0.0±0.35	ANGLES X'REF±6°	1:1			A2036W9-2XX1XX0	ENDE05	
A1	PART NUMBER RENEWAL	23.09.22			UNIT: mm SIZE: A4	X'±3° X'X' ±2°	APPROVED	Wang_jr	24.02.28	
A2	REMOVE PA66 MATERIAL	24.02.28					DESIGNER	Han_Gao	24.02.28	
					DRAWN	Zijun_Huang	24.02.28			

The product using material and processing must conform to the "WI-PZ-001"HSF technical standard control requirements

RoHS



CKL	Q, ty	CKL	Q, ty
2*02	385	2*12	89
2*03	287	2*13	79
2*04	227	2*14	69
2*05	188	2*15	69
2*06	167	2*16	69
2*07	139	2*17	59
2*08	128	2*18	59
2*09	109	2*19	50
2*10	100	2*20	49
2*11	90		

REV.	REVISION RECORD	DATE	GENERAL TOLERANCES		SCALE:	NAME	DATE	PART.NO:	DWG.NO:
A0	NEW RELEASE	21.10.12	 UNIT: mm SIZE: A4	LINEAR	1:1			A2036W9-2XX1XX0	ENDE05
A1	PART NUMBER RENEWAL	23.09.22		ANGLES	APPROVED	Wang_jr	24.02.28		
A2	REMOVE PA66 MATERIAL	24.02.28	0.00±0.25	X'±3'	DESIGNER	Han_Gao	24.02.28	TITLE: 包装规范	
			0.000±0.10	X'X' ±2'	DRAWN	Zijun_Huang	24.02.28		REV: A2

