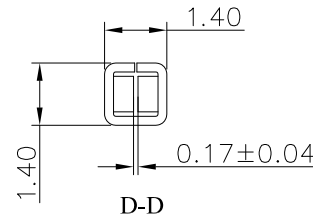
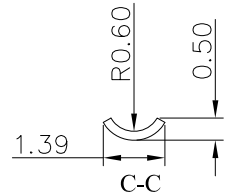
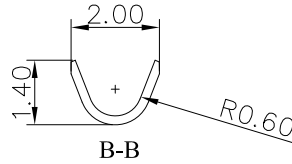
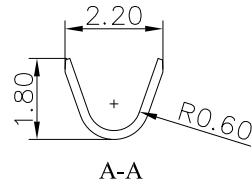
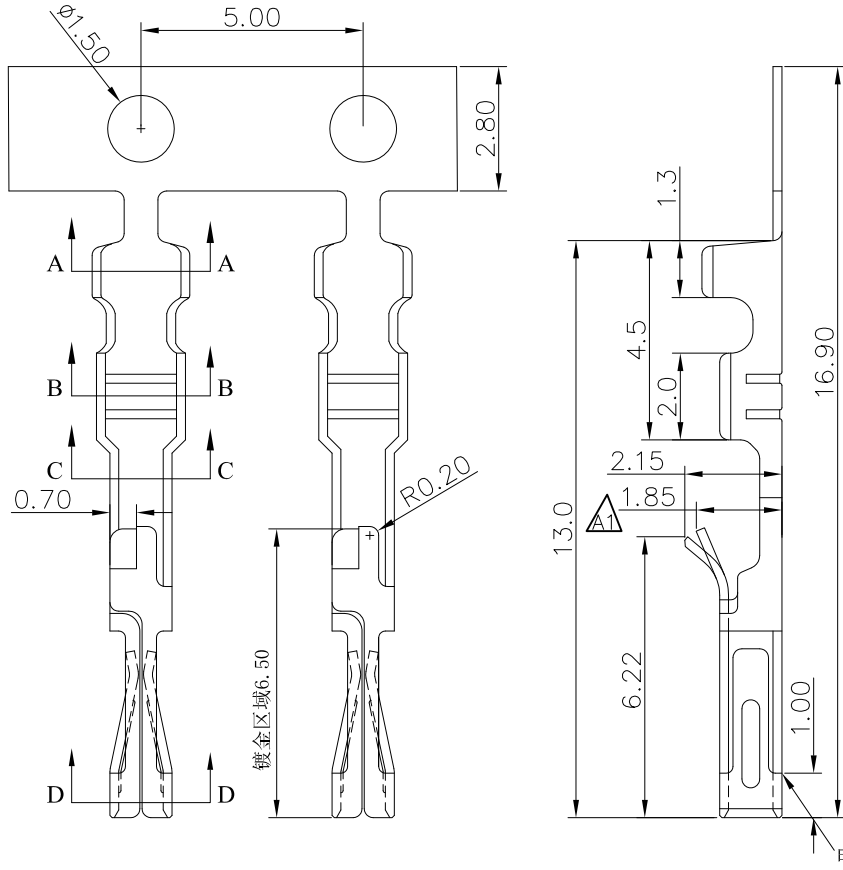


The product using material and processing must conform to the "WL-PZ-001"HSF technical standard control requirements

RoHS



NOTE:

- 1.MATERIAL SPECIFICATION:
 - 1-1.TERMINAL: PHOSPHOR BRONZE
- 2.PLATING SPECIFICATION:
 - 2-1.TERMINAL: TIN/GOLD FLASH PLATED OVER ALL.
- 3.MECHANICAL PERFORMANCE:
 - 3-1.RETENTIVITY FORCE: 1.5KGF/pin min
 - 3-2.DURABILITY: 50 CYCLES.
- 4.ELECTRICAL PERFORMANCE:
 - 4-1.CURRENT RATING: 3A AC/DC
 - 4-2.CONTACT RESISTANCE: 20 mΩ MAX
 - 4-3.INSULATION RESISTANCE: 100MΩ Min
 - 4-4.DIELECTRIC WITHSTANDING : 1500V
- 5.ENVIRONMENTAL PERFORMANCE:
 - 5-1.OPERATING TEMPERATURE: -25°C~+85°C.
- 6.PACKAGE SPEC: REEL
- 7.P/N:

SERIES NO: A2547 T 2 F X-X
 CONNECTOR: T-TERMINAL
 2-TYPE CODE
 MALE FEMALE: F-FEMALE M-MALE
 PLATING:
 1-G/F
 A-ALL AU G/F
 C-BRIGHT TIN
 D-MATTE TIN
 METAL:
 P-PHOSPHOR BRONZE
 B-BRASS

Ordering Information & Specifications

Part No	Wire Range	Insulation O.D.	Material	Finish	Qty/reel
A2547T2FP-A	AWG#22-#28	1.63mm(max)	Phosphor Bronze	Gold flash	15,000pcs
A2547T2FP-C	AWG#22-#28	1.63mm(max)	Phosphor Bronze	Tin Plated	15,000pcs
A2547T2FP-1	AWG#22-#28	1.63mm(max)	Phosphor Bronze	Contact Gold Flash Bottom Nickel	15,000pcs
A2547T2FP-D	AWG#22-#28	1.63mm(max)	Phosphor Bronze	Half-gold, Matte Tin	15,000pcs

REV.	REVISION RECORD	DATE	GENERAL TOLERANCES		SCALE:	NAME	DATE	PART.NO:	DWG.NO:
A0	NEW RELEASE	21.11.17	LINEAR	ANGLES	1:1	Wang_jr	23.07.25	A2547T2FX-X	ENDE05
A1	Modify the size according to the real thing	23.07.25	0.0±0.35	X*REF±6°	APPROVED	Han_Gao	23.07.25	TITLE: Pitch 2.54mm MX单排母端子松端 AWG#22-#28	REV: A0 SHEET: 1/1
			0.00±0.25	X*±3°	DESIGNER	Zijun_Huang	23.07.25		
			0.000±0.10	X*X'±2°	DRAWN				

