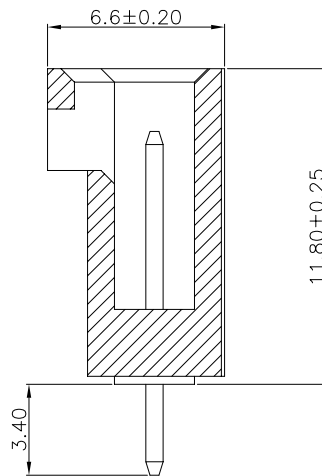
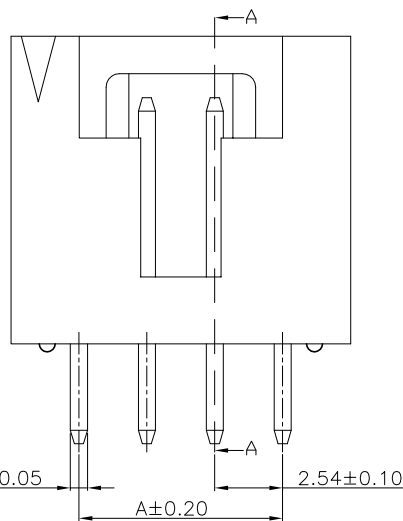
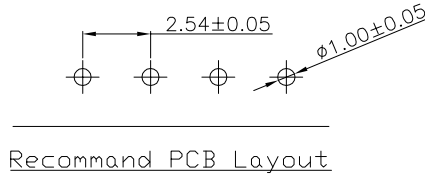
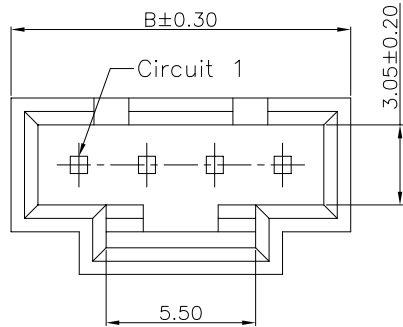


The product using material and processing must conform to the "WI-PZ-001"HSF technical standard control requirements

NOTE:
 1.MATERIAL SPECIFICATION:
 1-1.HOUSING: LCP/PA66,UL94V-0
 1-2.CONTACTS: BRASS
 2.PLATING SPECIFICATION:
 2-1.CONTACTS:
 TIN OR GOLD FLASH OVER NICKEL 30U" MIN.
 3.MECHANICAL PERFORMANCE:
 3-1.RETENTIVITY FORCE: 1.5KGF/pin min
 3-2.DURABILITY: 50 CYCLES.
 4.ELECTRICAL PERFORMANCE:
 4-1.CURRENT RATING: 3A AC/DC
 RATED VOLTAGE : 250V AC/DC
 4-2.CONTACT RESISTANCE: 20 mΩ MAX
 4-3.INSULATION RESISTANCE: 1000MΩ Min
 4-4.DIELECTRIC WITHSTANDING : 1500V
 5.ENVIRONMENTAL PERFORMANCE:
 5-1.OPERATING TEMPERATURE: -25°C~+85°C.
 6.PACKAGE SPEC: PE BAG
 7.P/N:



SECTION A-A
SCALE 1:1

A2547 W 0-1 XX 1 X X X
 SERIES NO: _____
 CONNECTOR: _____
 W-WAFER _____
 ANGLE: _____
 9-90°
 0-180°
 ROW NO: _____
 1-SINGLE ROW
 PIN Q'PY: _____
 02~24
 MATERIAL:
 0-LCP RoHS+HF
 1-PA66 RoHS
 COLOR:
 A-BLACK
 S-NATURE
 PLATING:
 A-ALL AU G/F
 C-BRIGHE TIN
 H-ALL AU 15U"
 TERMIPOINT:
 1-DIP

Ordering Information & Dimensions

Circuit	Dimensions (mm)		Circuit	Dimensions (mm)	
	A	B		A	B
2	2.54	7.62	14	33.02	38.10
3	5.08	10.16	15	35.56	40.64
4	7.62	12.70	16	38.10	43.18
5	10.16	15.24	17	40.64	45.72
6	12.70	17.78	18	43.18	48.26
7	15.24	20.32	19	45.72	50.80
8	17.78	22.86	20	48.26	53.34
9	20.32	25.40	21	50.80	55.88
10	22.86	27.94	22	53.34	58.42
11	25.40	30.48	23	55.88	60.96
12	27.94	33.02	24	58.42	63.50
13	30.48	35.56			

REV.	REVISION RECORD	DATE		GENERAL TOLERANCES		SCALE: 1:1	NAME	DATE	PART.NO:	DWG.NO:		
A0	NEW RELEASE	21.11.17		LINEAR	ANGLES		APPROVED	Wang_jr	23.09.22	A2547W0-1XX1XXX		ENDE05
A1	PART NUMBER RENEWAL	23.09.22	0.0±0.35	X'REF±6°		DESIGNER	Han_Gao	23.09.22	TITLE: Pitch 2.54mm MX 180°DIP 立插带扣 Wafer			
			UNIT:mm	X'±3°		DRAWN	Zijun_Huang	23.09.22				
			SIZE: A4	0.000±0.10	X'X' ±2°						REV: A1	SHEET: 1/1