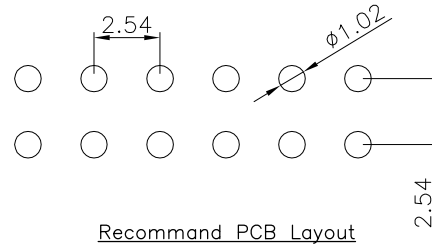
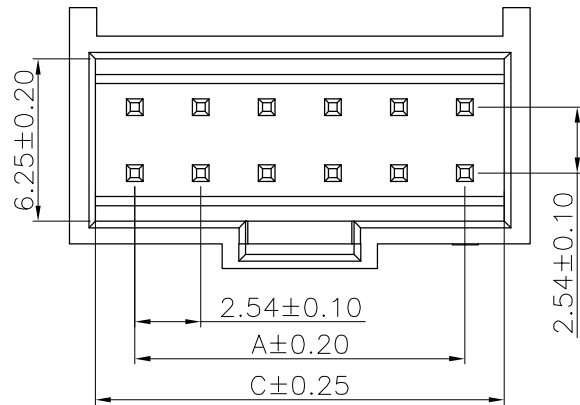
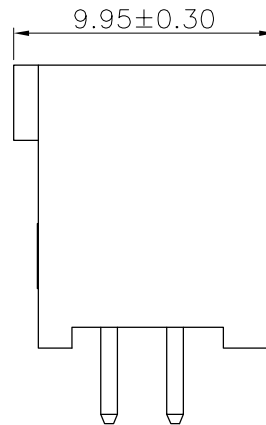
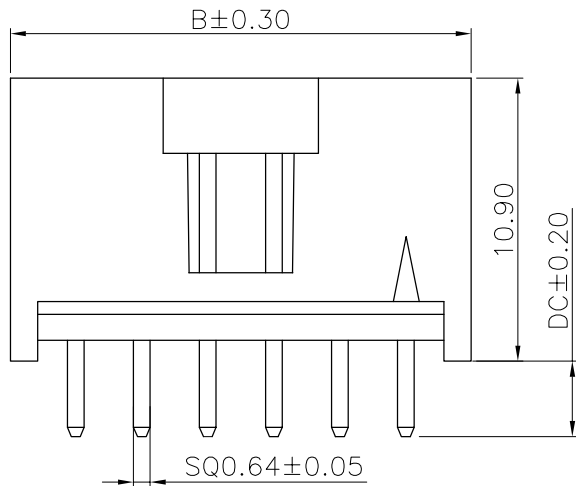


The product using material and processing must conform to the "WI-PZ-001"HSF technical standard control requirements

RoHS



Recommend PCB Layout



DC
2.50mm
2.90mm

- NOTE:
- MATERIAL SPECIFICATION:
 - HOUSING:PA66+30%G.F,UL94V-0 COLOUR:BLACK
 - TERMINAL:BRASS
 - PLATING SPECIFICATION:
 - TERMINAL:
 - GOLD-FLASH OR TIN-PLATED ON CONTACT AREA.
 - MECHANICAL PERFORMANCE:
 - RETENTION FORCE: 1.5kgf/PIN MIN
 - DURABILITY: 50 CYCLES.
 - ELECTRICAL PERFORMANCE:
 - RATED CURRENT : 3A AC/DC
RATED VOLTAGE : 250V AC/DC
 - INSULATION RESISTANCE: 1000MΩ MIN
CONTACT RESISTANCE : 20mΩ MAX
 - WITHSTANDING VOLTAGE:1500V AC/MINUTE
 - ENVIRONMENTAL PERFORMANCE:
 - OPERATING TEMPERATURE: -25°C~+85°C.
 - PACKAGE SPEC: PE BAG
 - P/N:

A2548 W 0-2 XX 1 X X X
 SERIES NO: _____
 CONNECTOR: _____
 W-WAFER _____
 ANGLE: _____
 0-180° _____
 ROW NO: _____
 2-DOUBLE ROW _____
 PIN Q' PY: _____
 06~64 _____
 DC: _____
 1-2.50mm _____
 2-2.90mm _____
 COLOR: _____
 A-BLACK _____
 PLATING: _____
 A-ALL AU G/F _____
 C-BRIGHT TIN _____
 TERMIPOINT: _____
 1-DIP _____

Ordering Information & Dimensions

Circuit	Dimensions (mm)			Circuit	Dimensions (mm)		
	A	B	C		A	B	C
2*03	5.08	10.12	8.02	2*18	43.18	48.22	46.12
2*04	7.62	12.66	10.56	2*19	45.72	50.76	48.66
2*05	10.16	15.20	13.10	2*20	48.26	53.30	51.20
2*06	12.70	17.74	15.64	2*21	50.80	55.84	53.74
2*07	15.24	20.28	18.18	2*22	53.34	58.38	56.28
2*08	17.78	22.82	20.72	2*23	55.88	60.92	58.82
2*09	20.32	25.36	23.26	2*24	58.42	63.46	61.36
2*10	22.86	27.90	25.80	2*25	60.96	66.00	63.90
2*11	25.40	30.44	28.34	2*26	63.50	68.54	66.44
2*12	27.94	32.98	30.88	2*27	66.04	71.08	68.98
2*13	30.48	35.52	33.42	2*28	68.58	73.62	71.52
2*14	32.02	38.06	35.96	2*29	71.12	76.16	74.06
2*15	35.56	40.60	38.50	2*30	73.66	78.70	76.60
2*16	38.10	43.14	41.05	2*31	76.20	81.24	79.14
2*17	40.64	45.68	43.58	2*32	78.74	83.78	81.68

REV.	REVISION RECORD	DATE		GENERAL TOLERANCES		SCALE:	NAME	DATE	PART.NO:	DWG.NO:	
A0	NEW RELEASE	21.01.13		LINEAR	ANGLES	1:1					
A1	Modify housing material	23.8.12	UNIT:mm	0.0±0.35	X'REF±6°	DESIGNER	Han_Gao	23.09.22	TITLE:	Pitch 2.54mm MX 180°双排立插带扣 WAFER	REV: A2 SHEET: 1/1
A2	PART NUMBER RENEWAL	23.09.22		0.00±0.25	X'±3°						
				0.000±0.10	X'X' ±2°						