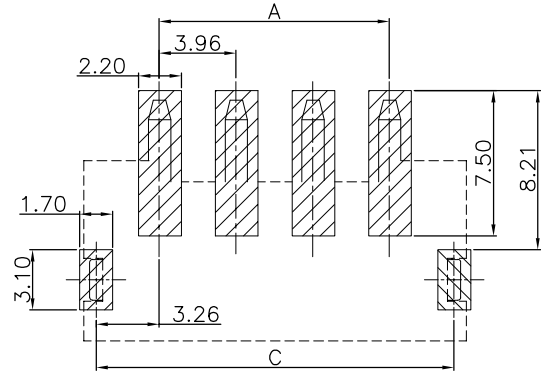
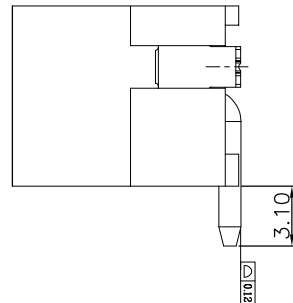
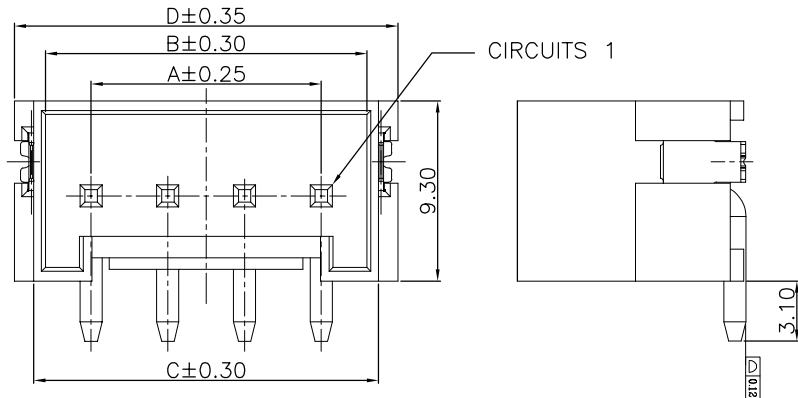


The product using material and processing must conform to the "WI-PZ-001"HSF technical standard control requirements

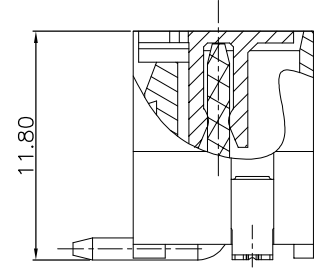
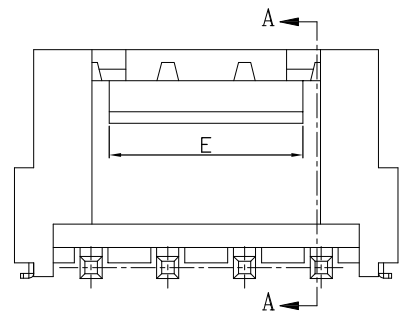


NOTE:
 1.MATERIAL SPECIFICATION:
 1-1.HOUSING: LCP,UL94V-0
 1-2.CONTACTS: BRASS
 2.PLATING SPECIFICATION:
 2-1.CONTACTS:
 TIN PLATED
 3.ELECTRICAL PERFORMANCE:
 3-1.CURRENT RATING: 7A
 3-2.CONTACT RESISTANCE: 20 mΩ MAX
 3-3.INSULATION RESISTANCE: 1000MΩ Min
 3-4.DIELECTRIC WITHSTANDING : 1500V
 4.ENVIRONMENTAL PERFORMANCE:
 4-1.OPERATING TEMPERATURE: -25°C~+85°C.
 5.PACKAGE SPEC: REEL
 6.P/N:

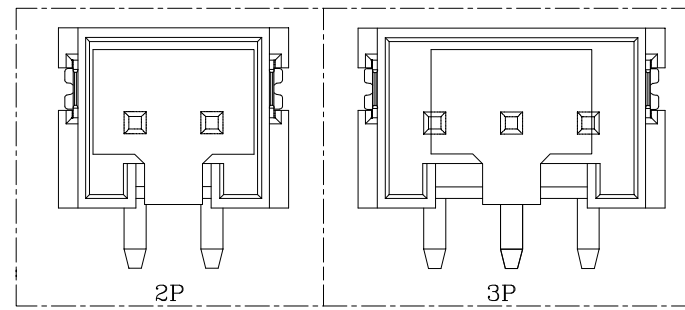
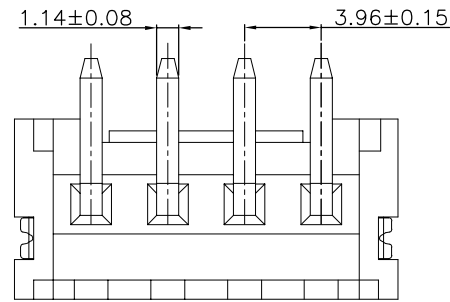
SERIES NO: A3962 W 0-1 XX 2 X X X Δ
 CONNECTOR: W-WAFER
 ANGLE: 0-180°
 ROW NO: 1-SINGLE ROW
 PIN Q' PY: 02~16
 WATER CODE: 0-N/A
 COLOR: S-NATURE
 PLATING: C-BRIGHT TIN
 TERMIPOINT: 2-SMT



RECOMMENDED PCB LAYOUT
 (GENERAL TOLERANCE:±0.05)



SECTION A-A



Circuits	Dimensions (mm)				
	A	B	C	D	E
02	3.96	8.68	10.18	11.84	3.88
03	7.92	12.64	14.14	15.8	7.84
04	11.88	16.6	18.1	19.76	
05	15.84	20.56	22.06	23.72	
06	19.8	24.52	26.02	27.68	
07	23.76	28.48	29.98	31.64	
08	27.72	32.44	33.94	35.6	
09	31.68	36.4	37.9	39.56	
10	35.64	40.36	41.86	43.52	10.00
11	39.6	44.32	45.82	47.48	
12	43.56	48.28	49.78	51.44	
13	47.52	52.24	53.74	55.4	
14	51.48	56.2	57.7	59.36	
15	55.44	60.16	61.66	63.32	
16	59.4	64.12	65.62	67.28	

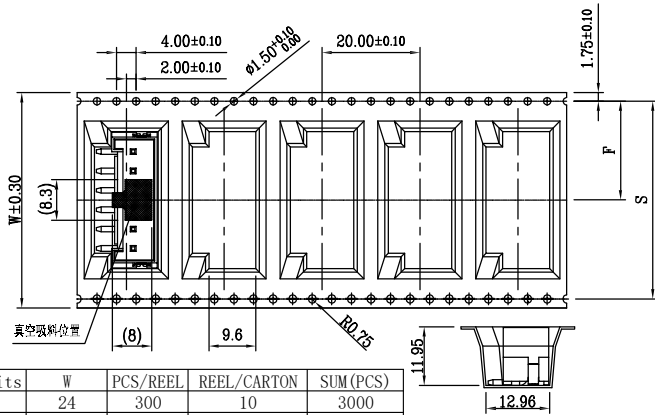
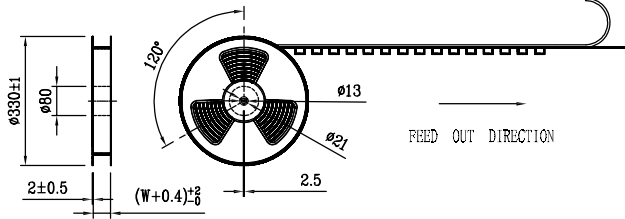
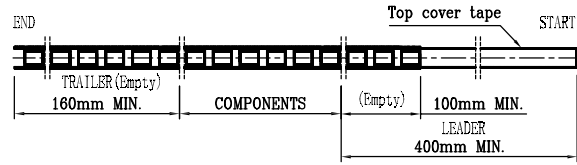
REV.	REVISION RECORD	DATE		GENERAL TOLERANCES		SCALE: 1:1	NAME	DATE	PART.NO: A3962W0-1XX2XXX	DWG.NO: ENDE05	
A0	NEW RELEASE	21.10.15		LINEAR	ANGLES	APPROVED	Wang_jr	23.09.14			
A1	PART NUMBER RENEWAL	23.09.14	UNIT:mm	X'±3°	DESIGNER	Gao_Han	23.09.14	TITLE:	Pitch 3.96mm 180° 单排立贴 Wafer	REV: A1	SHEET: 1/2
			SIZE: A4	0.000±0.10	X'X' ±2°	DRAWN	LX_HOU	23.09.14			

The product using material and processing must conform to the "WI-PZ-001" HSF technical standard control requirements

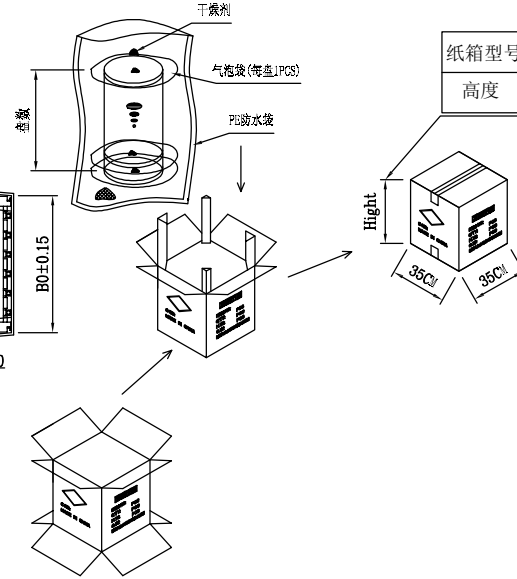


NOTE(注):

1. 10 SPROCKET HOLE PITCH CUMULATIVE TOLERANCE $\pm 0.2\text{mm}$. (10片孔距累积公差 $\pm 0.2\text{mm}$.)
2. CARRIER CAMBER NOT TO EXCEED 1mm IN 100mm. (载带拱/弧形MAX:1/100mm.)
3. ALL DIMENSIONS MEET EIA-481 REQUIREMENTS. (所有的尺寸要满足协会EIA-481规范.)
4. MATERIAL: CLEAR ANTISTATIC PS. (载带材料: 透明防静电 PS.)
5. THICKNESS: $0.40 \pm 0.05\text{mm}$. (载带厚度: $0.40 \pm 0.05\text{mm}$.)
6. PACKING LENGTH PER REEL: 7.6 METERS. (每卷包装长度: 7.6米.)
7. COMPONENT LOAD PER REEL: 600 PCS. (每卷包装数量: 600只, 前后各空包16只.)
8. Carton packing to no more than the line, using the free slots filled with plastic foam and nylon. (纸箱装箱以不超过装箱线为准, 空余位置用塑料泡沫及保尼龙填充.)
9. 纸箱分小、中、标准型3种规格型号; 装箱为整箱(左下包装量)采用标准型纸箱包装, 未达到整箱数量以产品量适当采用小型或中型纸箱包装.)



Circuits	W	PCS/REEL	REEL/CARTON	SUM (PCS)
02	24	300	10	3000
03	32	300	8	2400
04	44	300	6	1800
05	56	300	6	1800
06	72	300	6	1800
07	88	300	4	1200
08		300	4	1200
09		300	4	1200
10		300	3	900
11		300	3	900
12		300	3	900
13		300	3	900
14		300	3	900
15		300	3	900
16		300	3	900



纸箱型号	小型	中型	标准型
高度	7.5	15	32

Circuits	B0	W	F	S
02	12.18	24	11.50	/
03	16.14	32	14.20	28.40
04	20.10			
05	24.06	44	20.20	40.40
06	28.02			
07	31.98			
08	35.94	56	26.20	52.40
09	39.9			
10	43.86			
11	47.82	72	34.20	68.40
12	51.78			
13	55.74			
14	59.7			
15	63.66	88	42.20	84.40
16	67.62			

REV.	REVISION RECORD	DATE	GENERAL TOLERANCES		SCALE:	NAME	DATE	PART.NO:	DWG.NO:	WanLian Technology Co., Ltd	
A0	NEW RELEASE	21.10.15	⊕	LINEAR	1:1	Wang_jr	23.09.14	A3962W0-1XX2XXX	ENDE05		
A1	PART NUMBER RENEWAL	23.09.14	⊕	ANGLES		Gao_Han	23.09.14				
			UNIT:mm	0.00±0.25		LX_HOU	23.09.14	TITLE:		REV: A1	SHEET: 2/2
			SIZE: A4	0.000±0.10	X'REF±6°			Pitch 3.96mm 180° 单排立贴 Wafer			

