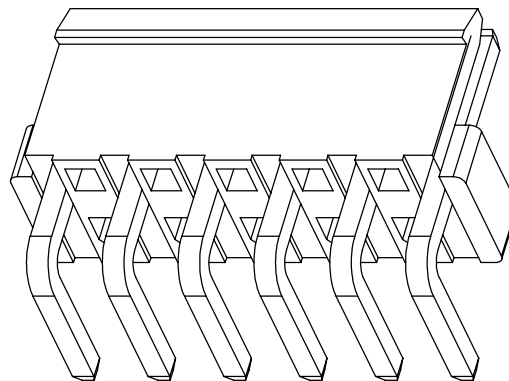
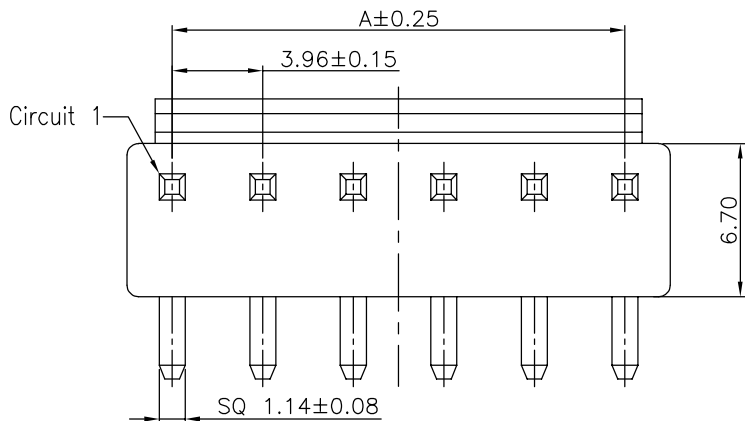


The product using material and processing must conform to the "WI-PZ-001" HSF technical standard control requirements

RoHS+HF



- NOTE:
- MATERIAL SPECIFICATION:
 - HOUSING: PA66,UL94V-0
 - CONTACTS: BRASS
 - PLATING SPECIFICATION:
 - CONTACTS: TIN/GOLD FLASH PLATED OVER ALL.
 - ELECTRICAL PERFORMANCE:
 - CURRENT RATING: 7A AC/DC
 - CONTACT RESISTANCE: 20 mΩ MAX
 - INSULATION RESISTANCE: 1000MΩ Min
 - DIELECTRIC WITHSTANDING : 1500V
 - ENVIRONMENTAL PERFORMANCE:
 - OPERATING TEMPERATURE: -25°C~+85°C.
 - PACKAGE SPEC: PE BAG
 - P/N:

A3962 W 9 A-1 XX 1 X X X

SERIES NO: W 9 A-1 XX 1 X X X

CONNECTOR: W-WAFER

ANGLE: 9-90°

TYPE: A-TYPE A

ROW NO: 1-SINGLE ROW

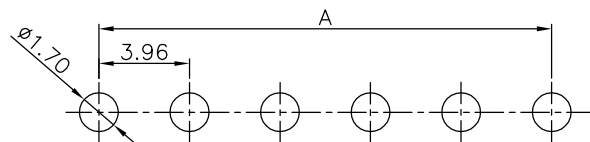
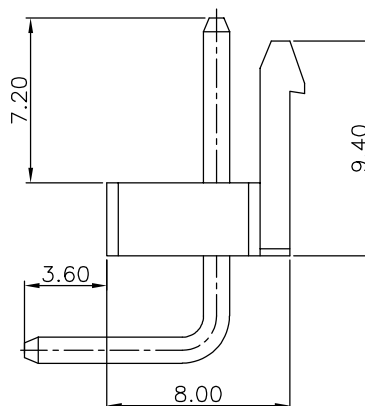
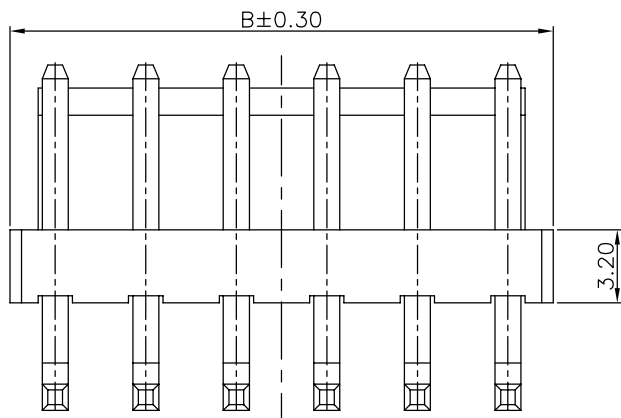
PIN Q'PY: 02~16

WATER CODE: 0-N/A

COLOR: S-NATURE

PLATING: C-BRIGHE TIN

TERMIPOINT: 1-DIP



RECOMMENDED PCB LAYOUT
(GENERAL TOLERANCE:±0.05)

Ordering Information & Dimensions

Circuit	Dimensions(mm)		Circuit	Dimensions(mm)	
	A	B		A	B
02	3.96	7.92	10	35.64	39.60
03	7.92	11.88	11	39.60	43.56
04	11.88	15.84	12	43.56	47.52
05	15.84	19.80	13	47.52	51.48
06	19.80	23.76	14	51.48	55.44
07	23.76	27.72	15	55.44	59.40
08	27.72	31.68	16	59.40	63.36
09	31.68	35.64			

REV.	REVISION RECORD	DATE	UNIT:mm	GENERAL TOLERANCES		SCALE: 1:1	NAME	DATE	PART.NO:	DWG.NO:
AO	NEW RELEASE	22.03.19		SIZE: A4	LINEAR	ANGLES	APPROVED	Wang_jr	22.03.19	A3962W9A-1XX1XXX
				0.0±0.35	X°REF±6°	CHECK	XueZe_Ma	22.03.19	TITLE:	 WanLian Technology Co., Ltd
				0.00±0.25	X°±3°	DRAWN	LanXuan_Hou	22.03.19	Pitch 3.96mm 90° 高弯 单排卧插 直背 Wafer	
				0.000±0.10	X°X' ±2°					REV: A0 SHEET: 1/2

