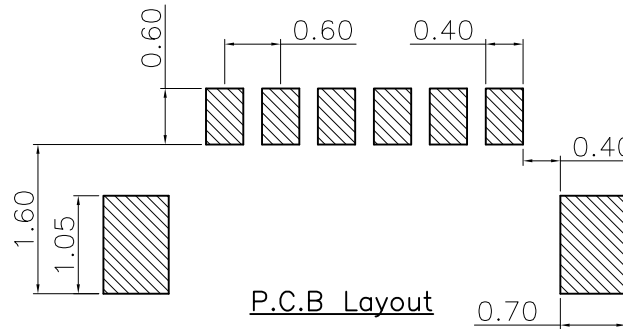
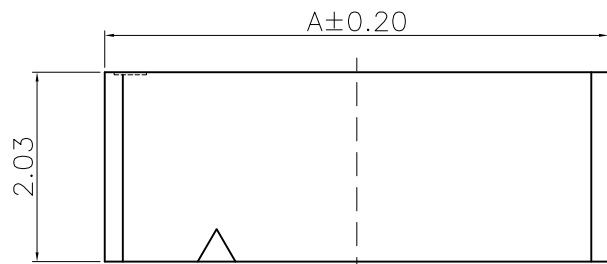


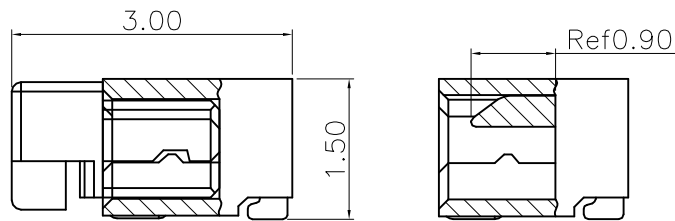
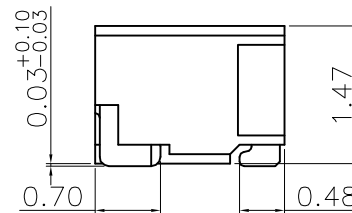
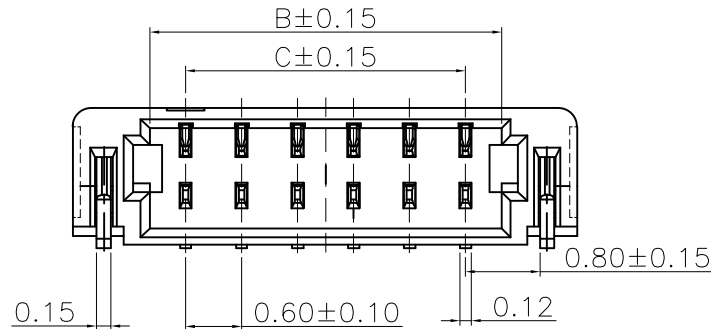
The product using material and processing must conform to the "WI-PZ-001"HSF technical standard control requirements

RoHS+HF



- NOTE:
- MATERIAL SPECIFICATION:
 - 1-1.HOUSING:LCP 94V-0 GRAY
 - 1-2.CONTACTS:PHOSPHOR BRONZE
 - 1-3.SHELL:BRASS
 - PLATING SPECIFICATION:
 - 2-1.CONTACTS: G/F UNDER PLATED OVER ALL.
 - 2-2.SHELL: MATTE-TIN UNDER PLATED OVER ALL.
 - MECHANICAL PERFORMANCE:
 - 3-1.MAINTAIN FORCE: 0.2kgf/pin min
 - 3-2.DURABILITY: 25 CYCLES.
 - ELECTRICAL PERFORMANCE:
 - 4-1.CURRENT RATING:0.2A
 - 4-2.VOLTAGE RATING:30V MAX
 - 4-3.CONTACT RESISTANCE: 30m Ohm MAX.
 - 4-4.INSULATION RESISTANCE: 100MΩ MIN
 - 4-5.DIELECTRIC WITHSTANDING VOLTAGE: 200V AC MIN.
 - ENVIRONMENTAL PERFORMANCE:
 - OPERATING TEMPERATURE: -25°C~+85°C.
 - PACKAGE SPEC:REEL
 - P/N ORDER:

SERIES NO: D0601 W 9-1 XX 2 X X 0
 CONNECTOR: W-WAFER
 ANGLE: 9-90°
 ROW NO: 1-SINGLE ROW
 PIN Q'PY: 02~16
 COLOR: A-BLACK S-NATURE
 PLATING: A-ALL AU G/F C-BRIGHT TIN D-MATTE TIN
 TERMIPOINT: 2-SMT



Mated

Circuit	Dimensions(mm)			Q'ty	Circuit	Dimensions(mm)			Q'ty
	A	B	C			A	B	C	
02	3.00	1.38	---	4500PCS	08	6.60	4.98	4.20	4500PCS
03	3.60	1.98	1.20	4500PCS	09	7.20	5.58	4.80	4500PCS
04	4.20	2.58	1.80	4500PCS	10	7.80	6.18	5.40	4500PCS
05	4.80	3.18	2.40	4500PCS	12	9.00	7.38	6.60	4500PCS
06	5.40	3.78	3.00	4500PCS	14	10.20	8.58	7.80	4500PCS
07	6.00	4.38	3.60	4500PCS	16	11.40	9.78	9.00	4500PCS

REV.	REVISION RECORD	DATE		GENERAL TOLERANCES		SCALE:	NAME	DATE	PART.NO:	DWG.NO:	
A0	NEW RELEASE	21.01.13		LINEAR	ANGLES	1:1					
A1	Modify the view	23.8.30		0.00±0.25	X'±3'	DESIGNER	Wang_jr	23.8.30	TITLE: JST SSR 0.60 Right Angle SMT Wafer		REV: A1 SHEET: 1/1
				0.00±0.35	X*REF±6'	DRAWN	Wang_jr	23.8.30			
				UNIT:mm	X'±3'						
			SIZE: A4	0.000±0.10	X'X' ±2'						

WanLian Teconology Co., Ltd