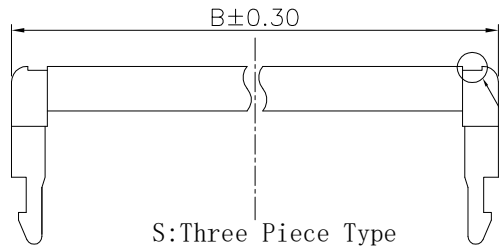


The product using material and processing must conform to the "WI-PZ-001"HSF technical standard control requirements

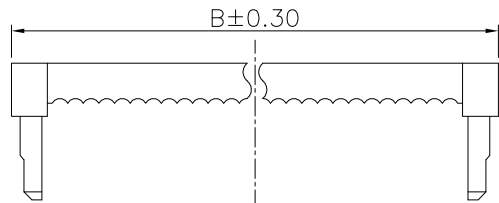
RoHS

NOTE:
 1.MATERIAL SPECIFICATION:
 1-1.HOUSING:PBT+25%G.F UL94V-0, COLOUR:BLACK
 1-2.CONTACT: BRASS
 2.PLATING SPECIFICATION:
 2-1.CONTACT:
 1U" GOLD PLATING
 30U" NICKEL UNDERPLATING OVER ALL.
 Au PLATED ON THE CONTACTS AREA.
 3.ELECTRICAL PERFORMANCE:
 3-1. RATED CURRENT : 2A
 RATED VOLTAGE : 250V AC
 3-2.INSULATION RESISTANCE: 1000MΩ MIN
 CONTACT RESISTANCE : 20mΩ MAX
 3-3.WITHSTANDING VOLTAGE:AC 500V/MINUTE
 4.ENVIRONMENTAL PERFORMANCE:
 OPERATING TEMPERATURE: -40°C~+105°C.
 5.P/N:
 D20750 M 0-2 XX 6 X X X
 SERIES NO: _____ WATER CODE
 0-N/A
 MALE FEMALE: _____ COLOR:
 M-MALE A-BLACK
 K-WHITE
 S-NATURE
 ANGLE: _____ PLATING:
 9-90° 1-G/F
 0-180° R-G/F 1u"
 ROW NO: _____
 2-DOUBLE ROW
 PIN Q'PY: _____ TERMPPOINT:
 06~64 6-PUNCTURE TYPE

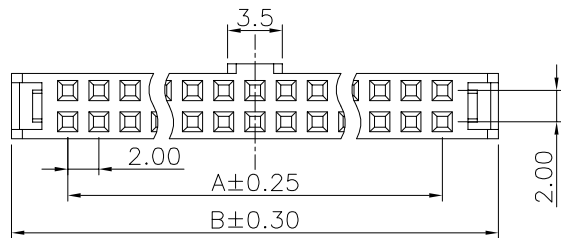
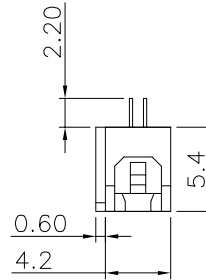
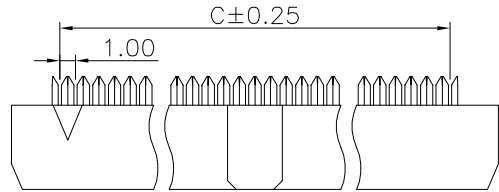


60P(含)以上有缺口
 60P(不含)以下无缺口

S:Three Piece Type



Two Piece Type



Poles	Dimensions(mm)			Poles	Dimensions(mm)		
	A	B	C		A	B	C
06	4.00	11.40	5.00	28	26.00	33.40	27.00
08	6.00	13.40	7.00	30	28.00	35.40	29.00
10	8.00	15.40	9.00	32	30.00	37.40	31.00
12	10.00	17.40	11.00	34	32.00	39.40	33.00
14	12.00	19.40	13.00	36	34.00	41.40	35.00
16	14.00	21.40	15.00	40	38.00	45.40	39.00
18	16.00	23.40	17.00	44	42.00	49.40	43.00
20	18.00	25.40	19.00	50	48.00	55.40	49.00
22	20.00	27.40	21.00	60	58.00	65.40	59.00
24	22.00	29.40	23.00	64	62.00	69.40	63.00
26	24.00	31.40	25.00	68	66.00	73.40	67.00

REV.	REVISION RECORD	DATE	UNIT:mm	GENERAL TOLERANCES		SCALE:	NAME	DATE	PART.NO:	DWG.NO:	TITLE:	REV: A0	SHEET: 1/1
AO	NEW RELEASE	22.09.23		LINEAR	ANGLES	1:1							
			0.00±0.25	X'±3'	DESIGNER	Han_Gao	22.09.23	D20750M0-2XX6XXX	ENDE05	PITCH 2.00mm 180° 双排 DIP IDC 三件套			
			0.000±0.10	X'X' ±2'	DRAWN	LanXuan_Hou	22.09.23						



WanLian Teconology Co., Ltd



广东万连科技有限公司
WanLian Teconology Co., Ltd

包装规范

PIN 数	包装方式	包材规格 (mm)			数量	内箱规格 (cm)			包装数量	外箱规格 (mm)			数量	备注
		L / (D)	W	H / (L)		L	W	H		L	W	H		
06	C	295	260	9	288				11520	560	320	230	23.04	
08	C	295	260	9	240				9600	560	320	230	19.2	
10	C	295	260	9	204				8160	560	320	230	16.32	
12	C	295	260	9	180				7200	560	320	230	14.4	
14	C	295	260	9	168				6720	560	320	230	13.44	
16	C	295	260	9	144				5760	560	320	230	11.52	
18	C	295	260	9	132				5280	560	320	230	10.56	
20	C	295	260	9	120				4800	560	320	230	9.6	
22	C	295	260	9	120				4800	560	320	230	9.6	
24	C	295	260	9	108				4320	560	320	230	8.64	
26	C	295	260	9	96				3840	560	320	230	7.68	
28	C	295	260	9	96				3840	560	320	230	7.68	
30	C	295	260	9	84				3360	560	320	230	6.72	
32	C	295	260	9	84				3360	560	320	230	6.72	
34	C	295	260	9	72				2880	560	320	230	5.76	
36	C	295	260	9	72				2880	560	320	230	5.76	
40	C	295	260	9	60				2400	560	320	230	4.8	
44	C	295	260	9	60				2400	560	320	230	4.8	
50	C	295	260	9	48				1920	560	320	230	3.84	
56	C	295	260	9	48				1920	560	320	230	3.84	
58	C	295	260	9	48				1920	560	320	230	3.84	
60	C	295	260	9	48				1920	560	320	230	3.84	
64	C	295	260	9	36				1440	560	320	230	2.88	
68	C	295	260	9	36				1440	560	320	230	2.88	

注： 每箱装40层，锁定盖另外袋装（箱子大小560*320*260，包装数量与本体一致）

									◆包 装 方 式
									◇ A= 1 → 9
									◇ B= 3 → 9
									◆ C= 4 → 9
									◇ D= 5 → 2 → 9
									◇ E= 6 → 7 → 9
									◇ F= 1 → 8 → 9
									◇ G= 3 → 1 → 9

核准:

审核:

制表: