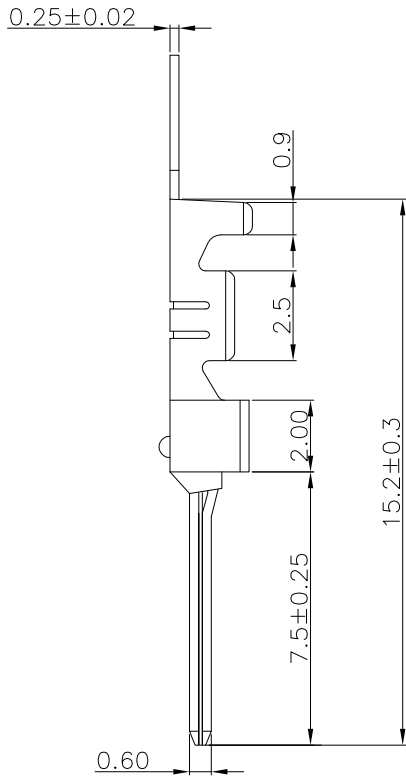
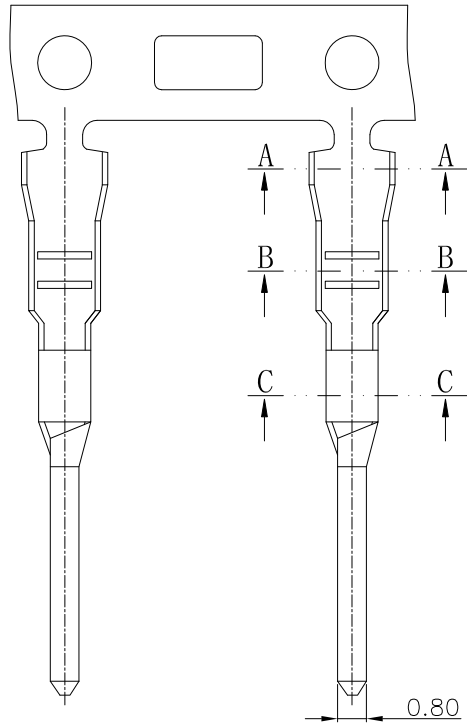


The product using material and processing must conform to the "WL-PZ-001" HSF technical standard control requirements

RoHS



NOTE:

- 1.MATERIAL SPECIFICATION:  
1-1.CONTACTS: PHOSPHOR BRONZE
- 2.PLATING SPECIFICATION:  
2-1.CONTACTS:  
TIN/GOLD FLASH PLATED OVER ALL.
- 3.MECHANICAL PERFORMANCE:  
3-1.RETENTIVITY FORCE: 1.2KGF/pin min  
3-2.DURABILITY: 30 CYCLES.
- 4.ELECTRICAL PERFORMANCE:  
4-1.CURRENT RATING: 3A AC/DC  
RATED VOLTAGE : 100V AC/DC  
4-2.CONTACT RESISTANCE: 10 mΩ MAX  
4-3.INSULATION RESISTANCE: 1000MΩ Min  
4-4.DIELECTRIC WITHSTANDING : 1000V
- 5.ENVIRONMENTAL PERFORMANCE:  
5-1.OPERATING TEMPERATURE: -25°C~+85°C.
- 6.PACKAGE SPEC : REEL

7.P/N: C2004 T M X-X

SERIES NO:

CONNECTOR:  
T-TERMINAL

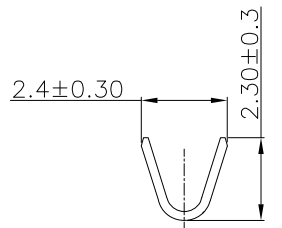
MALE FEMALE:  
M-MALE

PLATING:

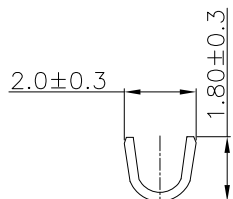
A-ALL AU G/F  
C-BRIGHE TIN  
D-MATTE TIN

METAL:

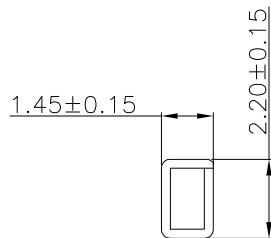
P-PHOSPHOR BRONZE  
B-BRASS



SEC:A-A



SEC:B-B



SEC:C-C

REV.	REVISION RECORD	DATE		GENERAL TOLERANCES		SCALE: 1:1	NAME	DATE	PART.NO:	DWG.NO:	 WanLian Teconology Co., Ltd
AO	NEW RELEASE	21.11.17		LINEAR	ANGLES	APPROVED	Wang_jr	21.11.17	C2004TMX-X	ENDE05	
			UNIT: mm	0.00±0.25	X°±3°	DESIGNER	Han_Gao	21.11.17	TITLE:		REV: A0 SHEET: 1/1
			SIZE: A4	0.000±0.10	X°X' ±2°	DRAWN	Zijun_Huang	21.11.17	Pitch2.00mm 线对线公端子 无LOGO AWG22#-26#		