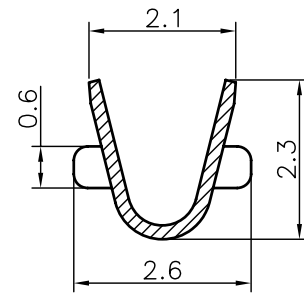
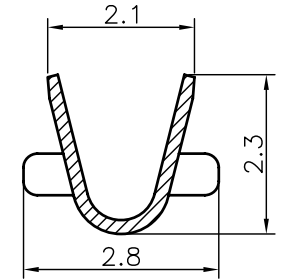


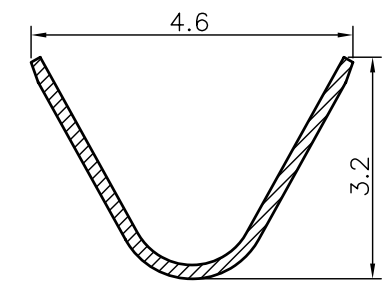
P.C.B LAYOUT
T=1.60mm



Section B-B



Section C-C



Section A-A

The product using material and processing must conform to the "WI-PZ-142" HSF technical standard control requirements

Part No	Wire Range	Insulation O.D.	Material	Finish	Qty/reel
21811T1P-2E	AWG #18~#22	2.10mm(max)	Phosphor Bronze	Tin-plated	6000 PCS

REV.	REVISION RECORD	DATE		GENERAL TOLERANCES		SCALE:	NAME	DATE	PART. NO:	DWG. NO:	 TERMINAL&CONNECTORS					
C0	新图面发行	10.01.19		LINEAR	ANGLES	1:1						APPROVED	21811T1P-2E	ENDE05		
C1	TN1205080032	12.05.08		0.0±0.25	X° REF±6°	DESIGNER						插板端子				
C2	更新公司名称	20.03.10		0.00±0.15	X° ±3°	DRAWN									伍文聪	20.03.10
				0.000±0.08	X° X'±2°											
			UNIT: MM	SIZE: A4			REV: C2	SHEET: 1/1								