

Specifications:

Voltage Rating : 500V AC/DC

Withstand Voltage : 1500V AC/minute

Contact Resistance : 10mΩ(MAX.)

Insulation Resistance : 1000MΩ(Min.)

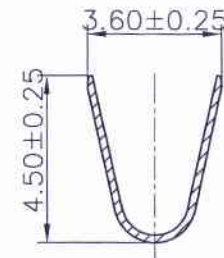
Terminal Retention : 3.00Kgf Min.

Suitable for 1.14mm PIN

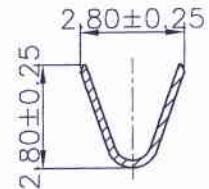
The product using material and processing

must conform to the "WI-PZ-142"HSF

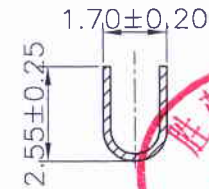
technical standard control requirements



SEC:A-A



SEC:B-B



SEC:C-C



Part No.	Wire Range	Insulation O.D.	Material	Finish	Qty/reel
34202T2B-3E-F-S2	AWG #16~#18	2.80mm(max)	Brass	Ni 50u" Min.,Matte Tin plated 80u" Min.	3,000 pcs
34202T2B-2E-F-S2	AWG #16~#18	2.80mm(max)	Brass	Ni 50u" Min.,Tin plated 80u" Min.	3,000 pcs

REV.	REVISION RECORD	DATE
A0	新图面发行	20.04.01

GENERAL TOLERANCES		SCALE:	NAME	DATE
	LINEAR	1:1	张振坤	20.05.07
	0.0±0.25	ANGLES		
0.00±0.15	X° REF±6°	APPROVED		
	0.00±0.15	X° ±3°	DESIGNER	20.05.07
	0.000±0.08		X° X'±2°	
UNIT: MM			张振坤	20.04.01
SIZE: A4				

PART. NO:	DWG. NO:
34202T2B-XX-F-S2	ENDE05
TITLE:	
4.20mm Pitch Crimp Terminal	

 JCTC ® TERMINAL&CONNECTORS	